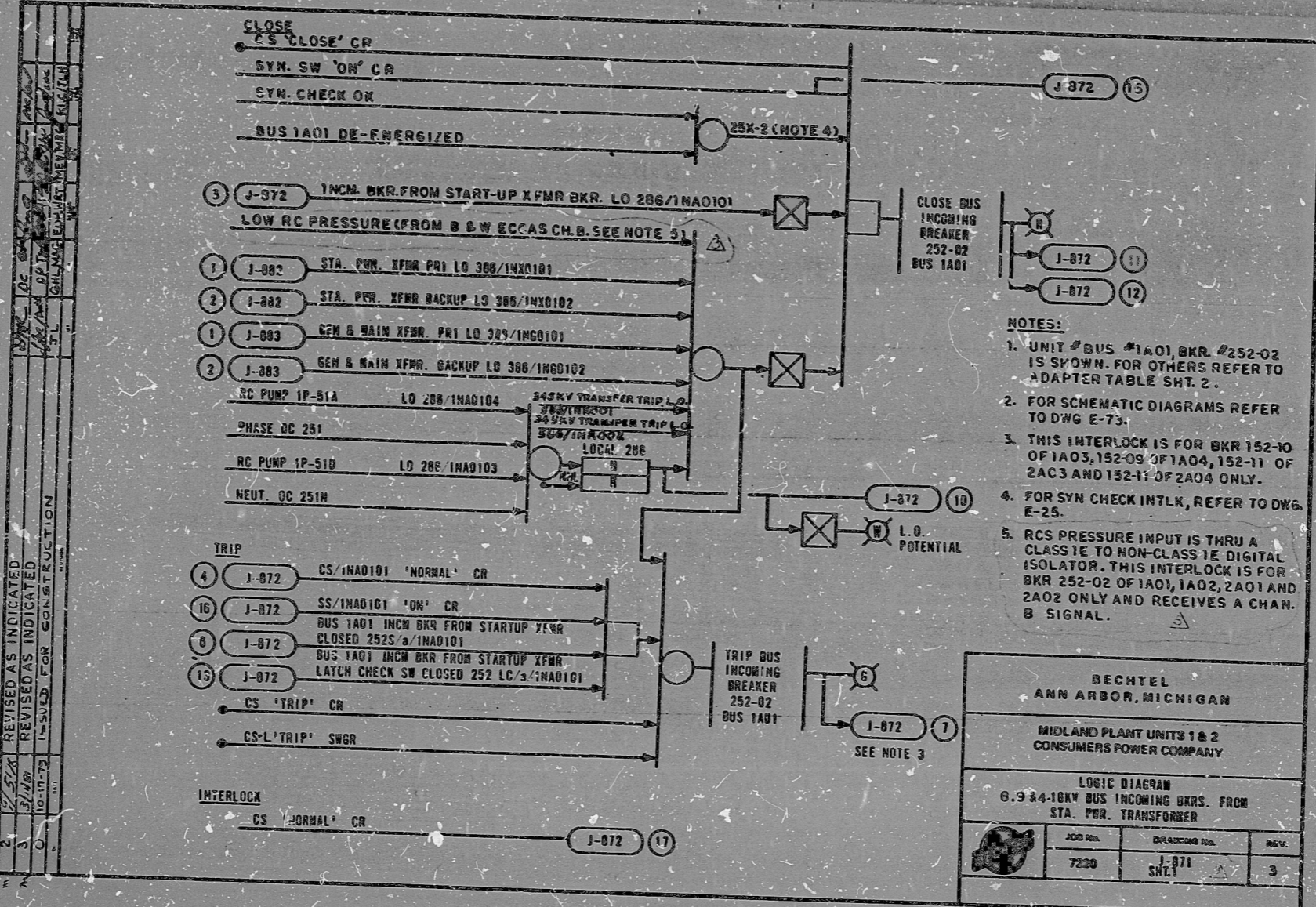


This drawing and the design it covers are the property of BECHTEL. They are hereby licensed and on the licensee's express agreement that they will not be reproduced, copied, loaned, exhibited, or used except in the limited way and under the limited conditions given by the license to the licensee.



- NOTES:**
1. UNIT # BUS #1A01, BKR. #252-02 IS SHOWN. FOR OTHERS REFER TO ADAPTER TABLE SHT. 2.
 2. FOR SCHEMATIC DIAGRAMS REFER TO DWG E-73.
 3. THIS INTERLOCK IS FOR BKR 152-10 OF 1A03, 152-09 OF 1A04, 152-11 OF 2A03 AND 152-11 OF 2A04 ONLY.
 4. FOR SYN CHECK INTLK, REFER TO DWG E-25.
 5. RCS PRESSURE INPUT IS THRU A CLASS 1E TO NON-CLASS 1E DIGITAL ISOLATOR. THIS INTERLOCK IS FOR BKR 252-02 OF 1A01, 1A02, 2A01 AND 2A02 ONLY AND RECEIVES A CHAN. B SIGNAL.

BECHTEL ANN ARBOR, MICHIGAN		
MIDLAND PLANT UNITS 1 & 2 CONSUMERS POWER COMPANY		
LOGIC DIAGRAM 6.9 & 4-16KV BUS INCOMING BKRS. FROM STA. PWR. TRANSFORMER		
JOB No.	DATE	REV.
7220	1-871 SHE1	3

I certify that the image contained on this frame was made in the normal and regular course of business, on the date stated below and that it is an accurate reproduction of the document submitted to reprographics.

3/18/81
DATE: 3/18/81
CAMERA OPERATOR: [Signature]
SUPERVISOR OF REPROGRAPHICS: [Signature]

16X PRC APERTURE CARD

RIDS

8302040244

