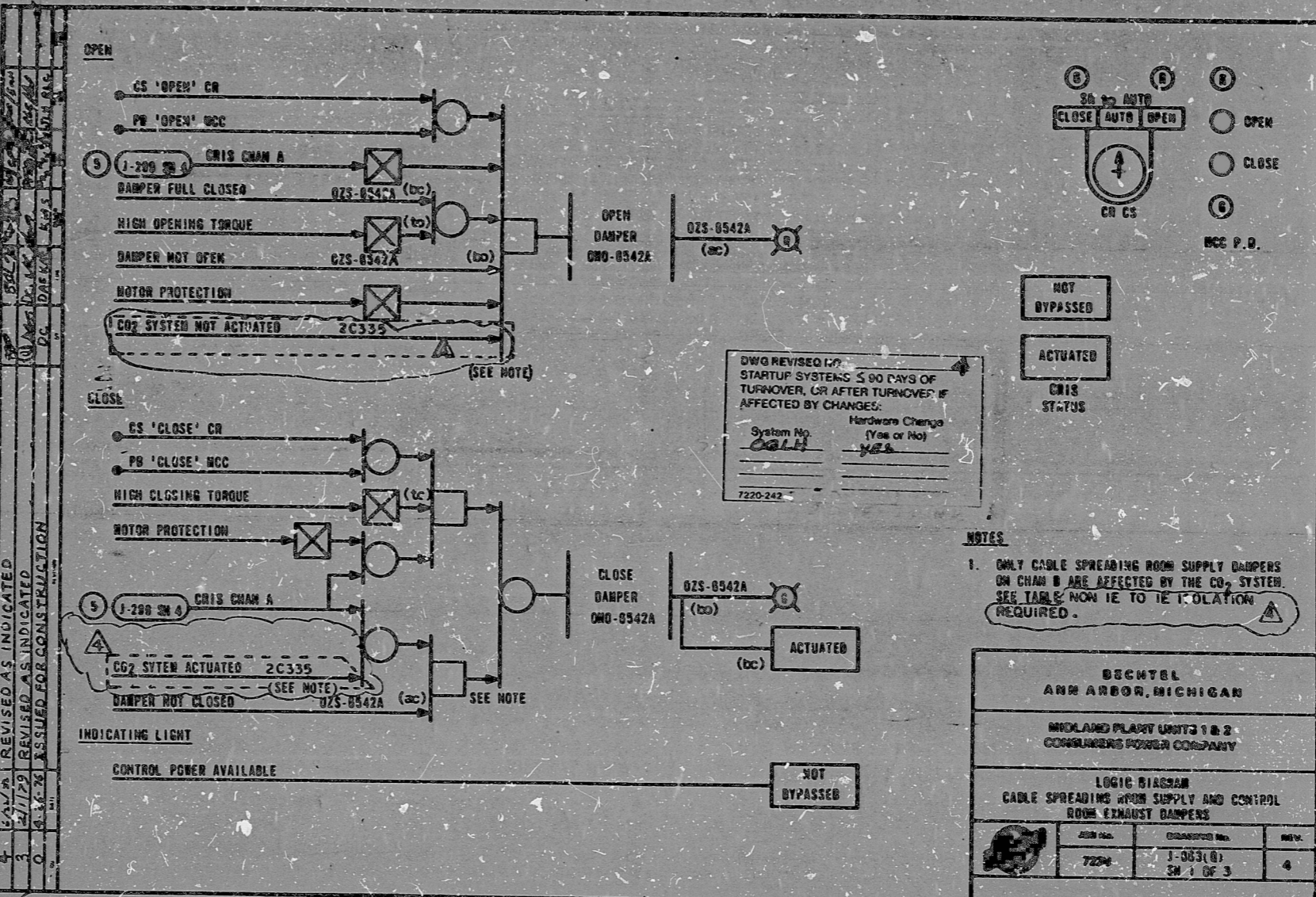


This drawing and the design it covers are the property of BECHTEL. They are hereby loaned and on the borrower's express agreement that they will not be reproduced, copied, loaned, exhibited, or used except in the limited way and purpose for which they are loaned.



I certify that the image contained on this frame was made in the normal and regular course of business, on the date stated below and that it is an accurate reproduction of the document submitted to the contractor for filing, by Bechtel Power Corporation.

6-23-82 DATE
M. C. ... CAMERA OPERATOR
... CONTRACTOR'S SUP'VR. OR MANAGER

16X

PRC
APERTURE
CARD

RIDS

8302040241

