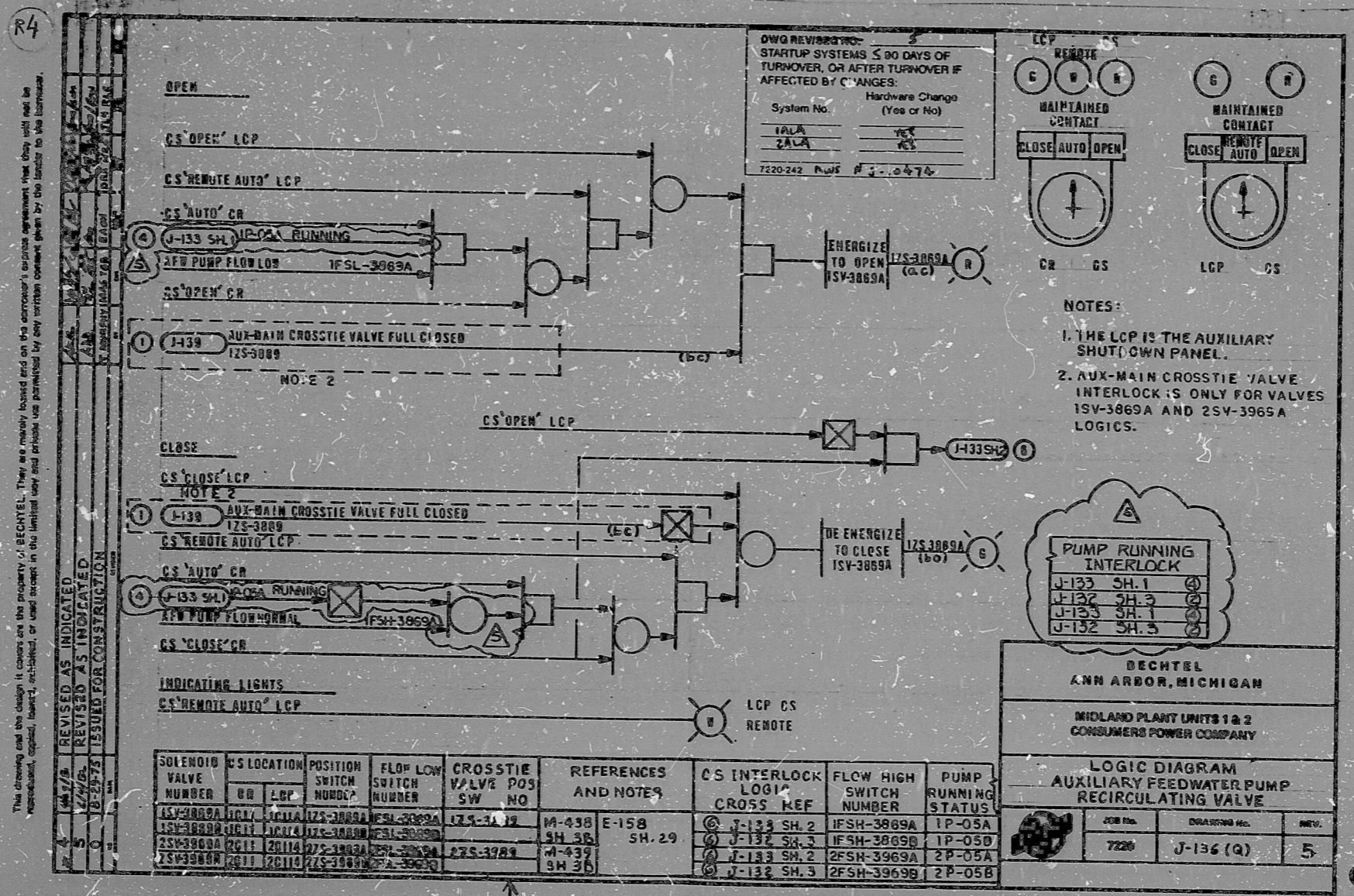


I certify that the logic contained on this frame was made in the normal and regular course of business, on the date stated below and that it is an accurate reproduction of the document submitted to the contractor for signing, by Bechtel Power Corporation.

6-8-82 C. Houston J. Atkinson  
 DATE CONTRACTOR OPERATOR CONTRACTOR'S SUPERVISOR OR MANAGER

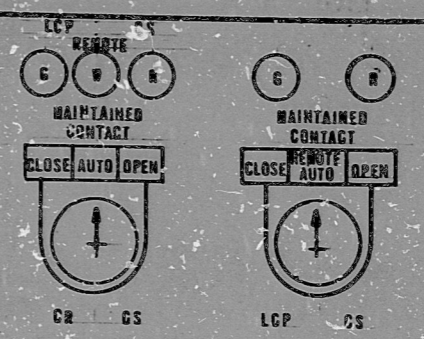
# 16X



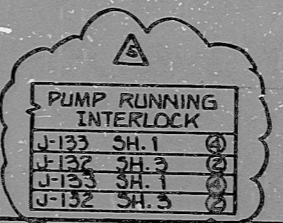
OWG REVISIONS:  
 STARTUP SYSTEMS < 90 DAYS OF  
 TURNOVER, OR AFTER TURNOVER IF  
 AFFECTED BY CHANGES:

System No.	Hardware Change (Yes or No)
1ALA	YES
2ALA	YES

7220-242 Rev# 4-2-82



NOTES:  
 1. THE LCP IS THE AUXILIARY SHUT-DOWN PANEL.  
 2. AUX-MAIN CROSS-TIE VALVE INTERLOCK IS ONLY FOR VALVES 1SV-3869A AND 2SV-3965A LOGICS.



BECHTEL  
 ANN ARBOR, MICHIGAN

MIDLAND PLANT UNITS 1 & 2  
 CONSUMERS POWER COMPANY

LOGIC DIAGRAM  
 AUXILIARY FEEDWATER PUMP  
 RECIRCULATING VALVE

JOB No.	DATE	REV.
7220	J-136 (Q)	5

This drawing and the design it covers are the property of BECHTEL. They are hereby loaned and on the borrower's express agreement that they will not be reproduced, copied, loaned, exhibited, or used except in the limited way and purpose use permitted by the loan to the borrower.  
 REVISED AS INDICATED  
 REVISED AS INDICATED  
 ISSUED FOR CONSTRUCTION

SOLENOID VALVE NUMBER	CS LOCATION	POSITION SWITCH NUMBER	FLOW LOW SWITCH NUMBER	CROSSTIE VALVE POS SW NO	REFERENCES AND NOTES	CS INTERLOCK LOGIC CROSS KEY	FLOW HIGH SWITCH NUMBER	PUMP RUNNING STATUS
1SV-3869A	1C11	1ZS-3869A	1FSL-3869A	1ZS-3869A	M-438 E-158 SH. 29	① J-133 SH. 2	1FSL-3869A	1P-05A
1SV-3869B	1C11	1ZS-3869B	1FSL-3869B	1ZS-3869B	M-438 E-158 SH. 29	② J-132 SH. 3	1FSL-3869B	1P-05B
2SV-3969A	2C11	2ZS-3969A	2FSL-3969A	2ZS-3969A	M-439 SH. 30	③ J-133 SH. 2	2FSL-3969A	2P-05A
2SV-3969B	2C11	2ZS-3969B	2FSL-3969B	2ZS-3969B	M-439 SH. 30	④ J-132 SH. 3	2FSL-3969B	2P-05B

PRC  
 APERTURE  
 CARD

RIDS

8302040217

