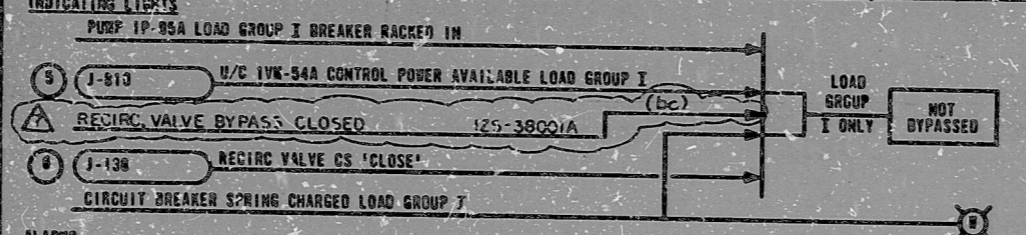


I certify that the image contained on this frame was made in the normal and regular course of business, on the date stated below and that it is an accurate reproduction of the document submitted to the contractor for filming, by Bechtel Power Corporation.

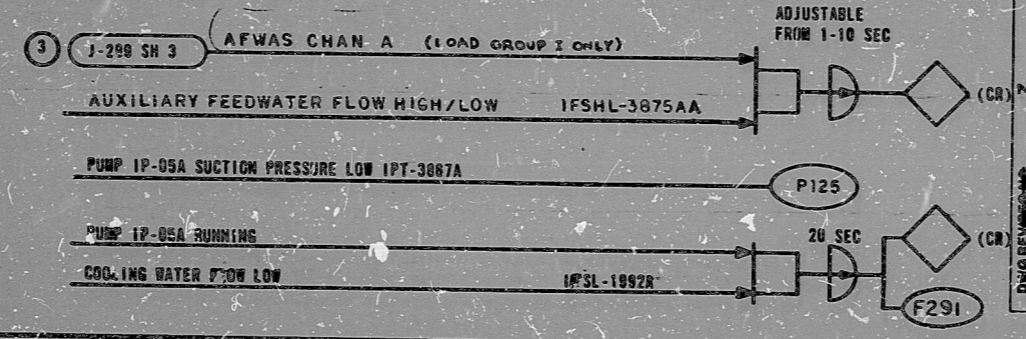
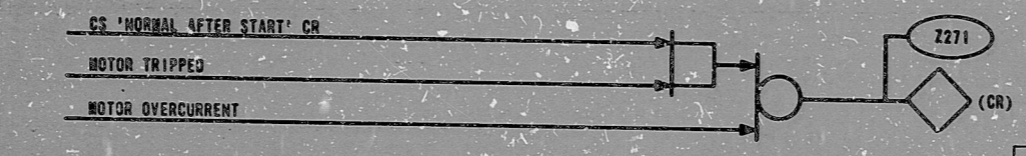
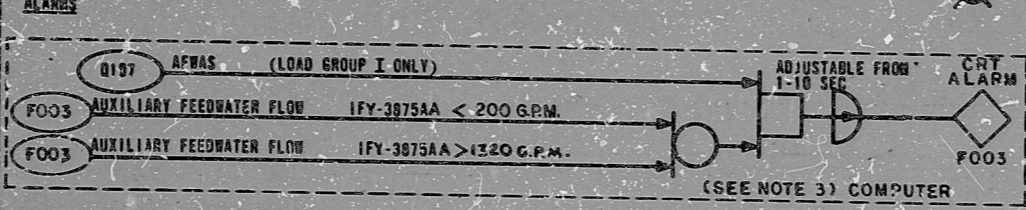
6-8-82 C. Clayton J. Ottavio  
 DATE CONTRACTOR OPERATOR CONTRACTOR'S SUPERVISOR OR MANAGER

16X

PUMP EQUIPMENT NUMBER	CS LOCATION		STATUS LIGHT LOCATION	RECIRC VALVE NO	UNIT COOLER NO	PUMP SUCTION PRESSURE SW NUMBER	COMPUTER I/O NUMBERS			MANUAL RECIRC VALVE POS. SWITCH	AUX FDWTR FLOW SW HIGH-LOW	ESFAS CHAN	LOAD GROUP
	CR	LCP					2107	2271	P125				
1P-05A	1C11	1C14	1C14	1SV-3889A	1VW-94A	1PSL-3887A	2107	2271	P125	1ZS-3800IA	1FSHL-3875AA	A	I
2P-05A	2C11	2C14	2C14	2SV-3889A	2VW-94A	2PSL-3887A	Q107	2271	P125	2ZS-3900IA	2FSHL-3975AA	A	I



COMPUTER FLOW ALARM	REFERENCE
NO. 1	P#10 SCHEME
FO03 1FY-3875AA	A-4395A/B E-154
FO03 2FY-3975AA	1-4395A/B E-158



NOTE:

- THE PUMP MUST BE NORMALLY POWERED FROM THE LOAD GROUP I (LGI). HOWEVER, TO ENSURE POWER AVAILABILITY POST-ACCIDENT, POWER MAY BE FED FROM LOAD GROUP II. WHEN POWERED FROM LOAD GROUP II, ONLY MOTOR PROTECTION, CONTROL SWITCH AND LOAD SHED INPUTS WILL OPERATE THE PUMP AS INDICATED IN THE TABLE. CHANGE OF PUMP POWER WILL OCCUR MANUALLY BY RACKING OUT THE LOAD GROUP I BREAKER AND RACKING IN THE LOAD GROUP II BREAKER. BREAKER KEY INTERLOCKS WILL PREVENT BUS PARALLELING.
- USE SAME I/O NOS FOR BOTH UNITS
- REFER TO J-389, PLANT COMPUTER MISCELLANEOUS PROGRAMMING.

BECHTEL  
ANN ARBOR, MICHIGAN

MIDLAND PLANT UNITS 1 & 2  
CONSUMERS POWER COMPANY

LOGIC DIAGRAM  
AUXILIARY FEEDWATER PUMP-ELECTRIC

JOB No.	DATE	REV.
7220	1-33 (0) SH 2	7

THIS DRAWING IS THE PROPERTY OF BECHTEL. IT IS TO BE USED ONLY FOR THE PROJECT AND SITE SPECIFICALLY IDENTIFIED HEREON. IT IS TO BE RETURNED TO BECHTEL UPON COMPLETION OF THE PROJECT. IT IS NOT TO BE REPRODUCED OR COPIED IN ANY MANNER WITHOUT THE WRITTEN PERMISSION OF BECHTEL.

REVISIONS

NO.	DATE	DESCRIPTION
1	12/78	REVISED AS INDICATED
2	1/79	REVISED AS INDICATED
3	8-82	ISSUED FOR CONSTRUCTION

PRO APERTURE CARD



RIDS

8302040216

