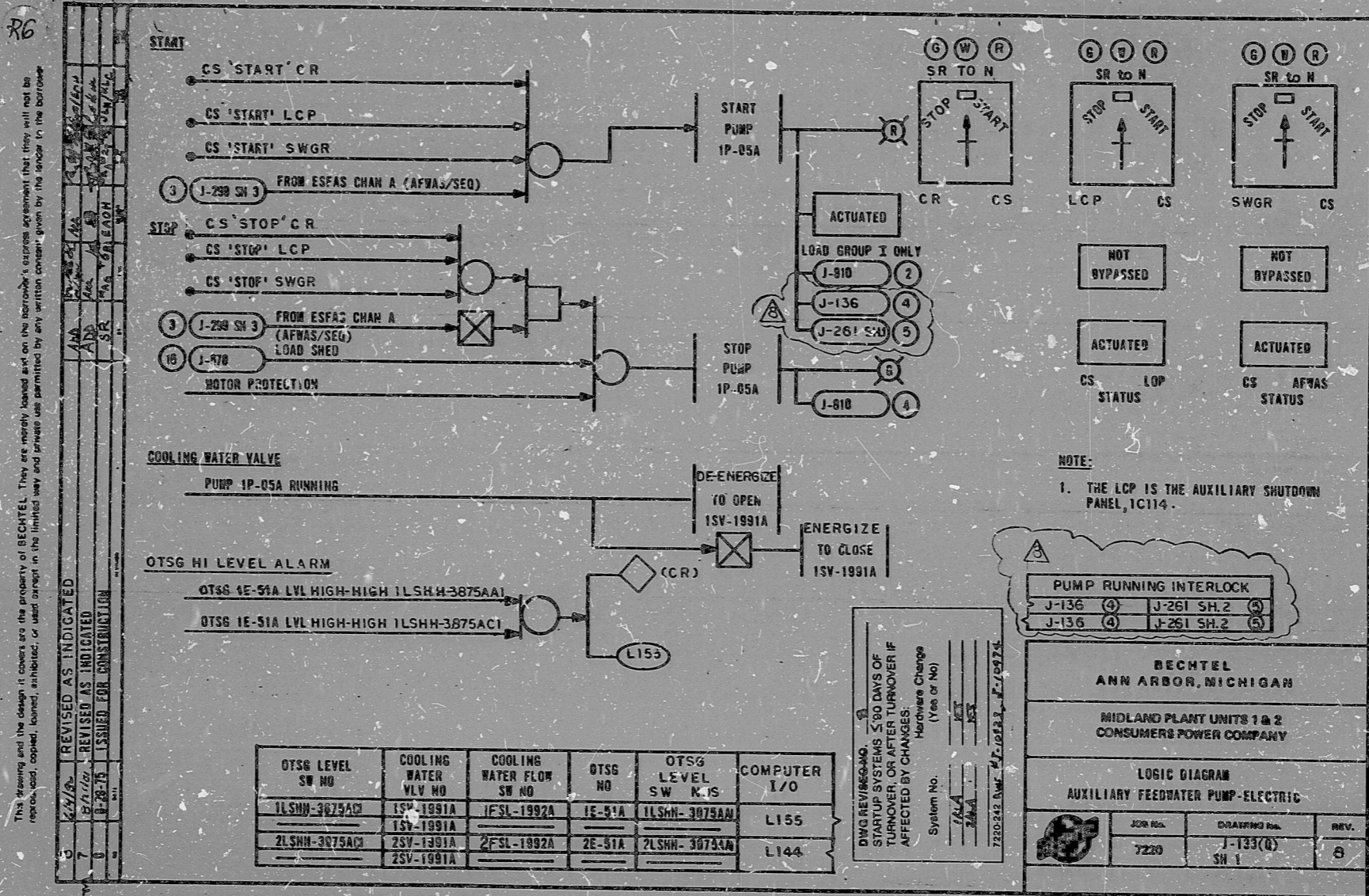


I certify that the image contained on this "frame" was made in the normal and regular course of business, on the data stated below and that it is an accurate reproduction of the document submitted to the contractor for filing, by Bechtel Power Corporation.

6-8-82 C. Claxton J. Claxton
DATE CONTRACTOR'S SUP'V CR ENGINEER

16X



This drawing and the design it covers are the property of BECHTEL. They are hereby loaned to you on the borrower's express agreement that they will not be reproduced, copied, loaned, exhibited, or used in any way without the written consent of BECHTEL.

NOTE:
1. THE LCP IS THE AUXILIARY SHUTDOWN PANEL, 1C114.

PUMP RUNNING INTERLOCK	
J-136 (4)	J-261 SH.2 (4)
J-136 (4)	J-261 SH.2 (5)

BECHTEL ANN ARBOR, MICHIGAN		
MIDLAND PLANT UNITS 1 & 2 CONSUMERS POWER COMPANY		
LOGIC DIAGRAM AUXILIARY FEEDWATER PUMP-ELECTRIC		
JOB NO. 7220	DRAWING NO. J-133(B) SH 1	REV. 8

PRG
APERTURE
CARD

RIDS

8302040215

