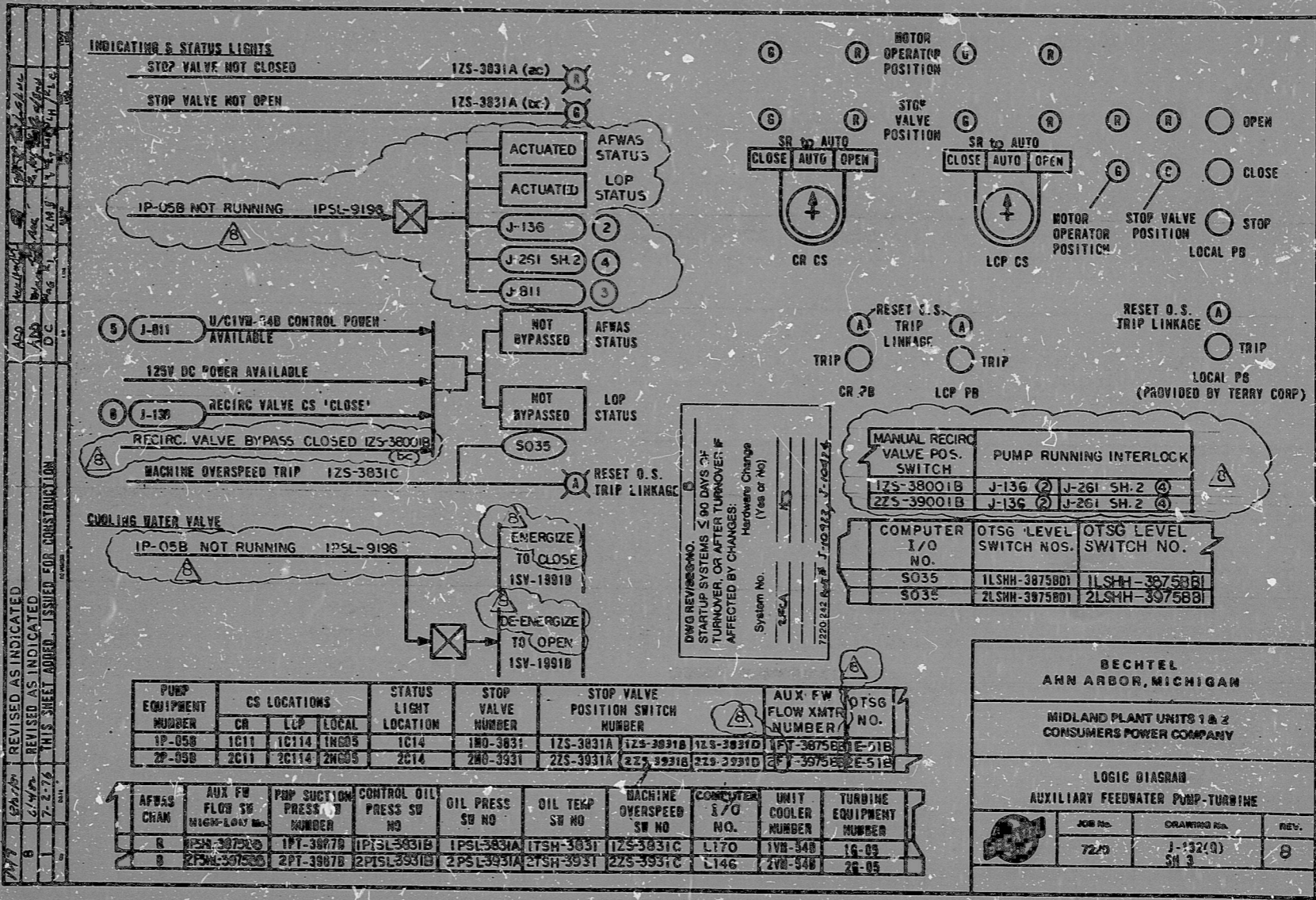


I certify that the image contained on this frame was made in the normal and regular course of business, on the date stated below and that it is an accurate reproduction of the document submitted to the extractor for filming, by Bechtel Power Corporation.

6-8-82 C. Claxton J. Ott  
 DATE CAMERA OPERATOR CONTRACTOR'S SUP'V OR MANAGER

16X

This drawing and the design it covers are the property of BECHTEL. They are hereby licensed and used as permitted by any written agreement given by the licensor to the licensee. No part of this drawing may be reproduced, copied, retransmitted, established, or used except in the limited way and scope as permitted by any written agreement given by the licensor to the licensee.



REVISED AS INDICATED	DATE	BY	REASON
REVISED AS INDICATED	7-2-78	J. Ott	ISSUED FOR RECONSTRUCTION

PUMP EQUIPMENT NUMBER	CS LOCATIONS			STATUS LIGHT LOCATION	STOP VALVE NUMBER	STOP VALVE POSITION SWITCH NUMBER			AUX. F.W. FLOW XMTR. NUMBER	OTSG NO.
	CR	LCP	LOCAL			CR	LCP	LOCAL		
1P-05B	1C11	1C114	1N605	1C14	1W0-3831	1ZS-3831A	1ZS-3831B	1ZS-3831C	1PT-3875B	1E-11B
2P-05B	2C11	2C114	2N605	2C14	2W0-3831	2ZS-3831A	2ZS-3831B	2ZS-3831C	2PT-3875B	2E-51B

AFWS CRAN	AUX. F.W. FLOW SW HIGH-LOW NO.	PMP SUCTION PRESS SW NUMBER	CONTROL OIL PRESS SW NO.	OIL PRESS SW NO.	OIL TEMP SW NO.	MACHINE OVERSPEED SW NO.	COMPUTER I/O NO.	UNITY COOLER NUMBER	TURBINE EQUIPMENT NUMBER
1	1P-3872D	1PT-3877B	1PISL-3831B	1PISL-3831A	1TSH-3831	1ZS-3831C	L170	1V8-54B	1G-05
2	2P-3872D	2PT-3877B	2PISL-3831B	2PISL-3831A	2TSH-3831	2ZS-3831C	L146	2V8-54B	2G-05

PRC APERTURE CARD



RIDS

8302040209

