

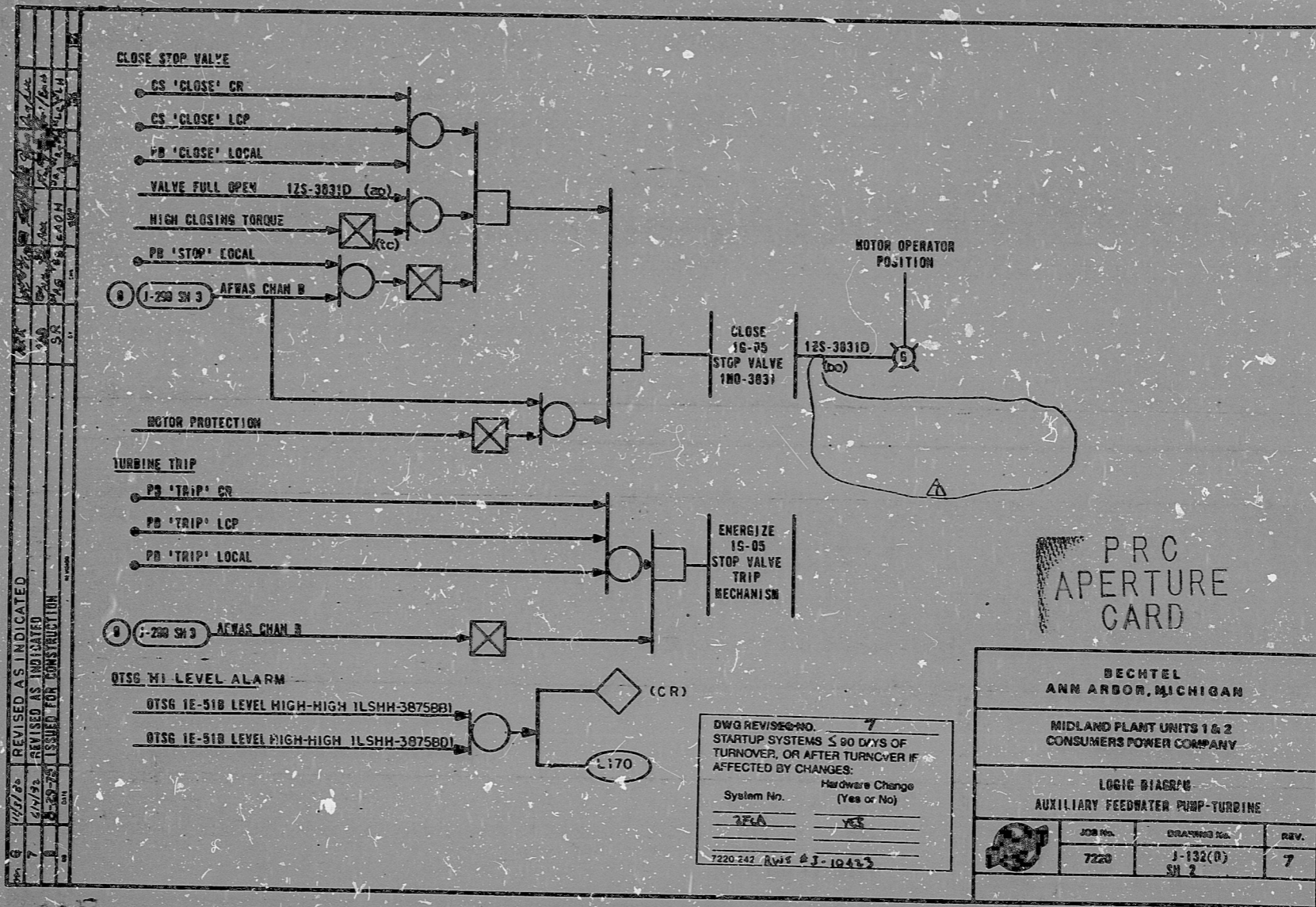
I certify that the image contained on this frame was made in the normal and regular course of business, on the date stated below and that it is an accurate reproduction of the document submitted to the contractor for filing, by Bechtel Power Corporation.

6-8-82 C. Claxton J. Ottens
 DATE CANEVA OPERATOR CONTRACTOR'S SUP'V
 OR MANAGER

16X

R6

This drawing and the design it covers are the property of BECHTEL. They are hereby loaned and on the borrower's express agreement that they will not be reproduced, copied, loaned, exhibited, or used in part or in full without the written permission of BECHTEL. Consent given by the lender to the borrower.



RIDS

8302040206

