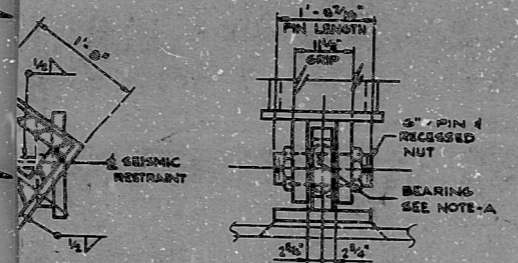


-1C
1A-1A

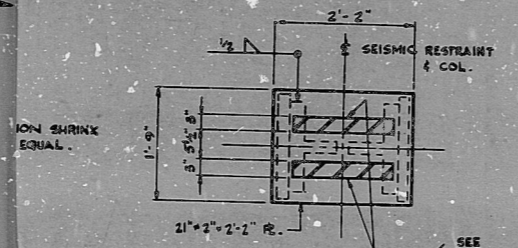
SECTION 2A-2A



ZD-ZD

SECTION 2E-2E (SHOWN)
SECTION 2E'-2E' (SIMILAR)

NOTE-A: MONOBALL BEARING BY SOUTHWEST CO. MONROVIA, CALIF. CATALOG NO. 951, BEARING NO. BSR 95004 (CADMIUM PLATED, DRY LUBRICANT) OR EQUAL.



SECTION 2J-2J

- NOTES:
1. FOR "GENERAL NOTES" SEE DWG. 1405-S-35-314
 2. ALL EXPANSION BOLTS SHALL BE 1" STAR SLUG IN BEARING TYPE EXPANSION BOLT. EXPANSION BOLTS WILL BE ARRANGED AS SHOWN ON PLANS DRILLING THRU REINFORCING BARS IS ALLOWABLE BUT NOT DESIRABLE.
 3. HOLES IN BASE PLATES TO BE FIELD DRILLED TO SUIT LOCATION OF EXPANSION BOLTS.

TERA
APERTURE
CARD

OMAHA PUBLIC POWER DISTRICT	
OMAHA, NEBRASKA	
DATE	11/10/50
BY	W. J. ...
CHECKED	...
APPROVED	...
SCALE	AS SHOWN
NOTES	...

OMAHA PUBLIC POWER DISTRICT
FORT CALHOUN STATION UNIT NO. 1
WORK ORDER NO. 1001

VERTICAL SEISMIC RESTRAINTS
FOR STEAM GENERATORS

CONSULTING ENGINEERS
CHAS. HILL, DONALD B. HANLON & ASSOCIATES, INC.
OMAHA, NEBRASKA

DATE: 11-10-50
JOB NO. 1405
11405-S-30 SH3
16410

28
27
26
25
24
23
22
21
20
19
18
17
16
15
14
13
12
11
10
9
8
7
6
5
4
3
2
1

28
27
26
25
24
23
22
21
20
19
18
17
16
15
14
13
12
11
10
9
8
7
6
5
4
3
2
1

F G H

DDASTR

8108120057

2 cards

