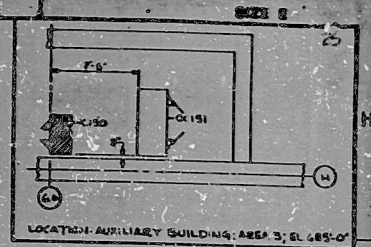
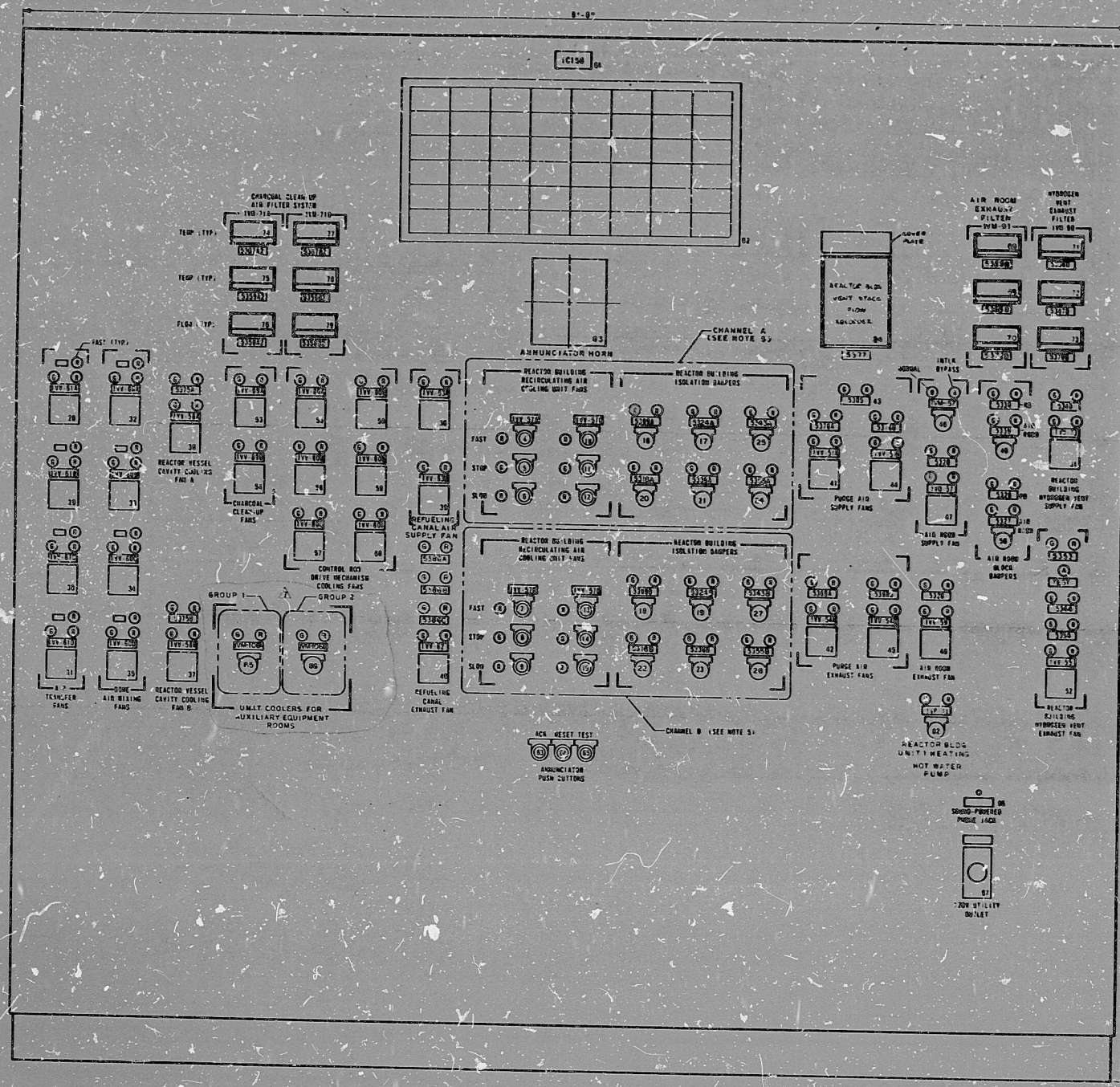


J-922 (C)



- NOTES:**
- DEPTH OF CABINET - 2'-0"
 - DOORS ARE LOCATED AT 45° BY EXHIBIT FOR SPECIFICATION 7220-3-228, APPROPRIATE D.
 - FAN SERVICE CIRCUIT AND 24-1-822
 - COMPLETE DISCONNECT FROM MAIN ARE INDICATED FOR 240V, 70 WIREPLATE CONNECTIONS SEE 24-1-822
 - CLASS II DEVICES WITH SEPARATE ENCLOSURES DESIGNATED "CLASS II" AND CLASS OF USE LISTED AND SHALL MEET THE SEPARATE REQUIREMENTS STATED IN PARAGRAPH 5.12 OF SPECIFICATION 7220-3-228. ALL OTHER NOTICES ARE 496-C.

POOR ORIGINAL 30X

PRC APERTURE CARD

NO.	DESCRIPTION	DATE	BY
1	REVISION AS INDICATED	10/10/68	J.P.
2	REVISION AS INDICATED	10/10/68	J.P.
3	REVISION AS INDICATED	10/10/68	J.P.
4	REVISION AS INDICATED	10/10/68	J.P.
5	REVISION AS INDICATED	10/10/68	J.P.
6	REVISION AS INDICATED	10/10/68	J.P.
7	REVISION AS INDICATED	10/10/68	J.P.
8	REVISION AS INDICATED	10/10/68	J.P.
9	REVISION AS INDICATED	10/10/68	J.P.
10	REVISION AS INDICATED	10/10/68	J.P.

DECNTEL
 488 44328 MICHAIG
 WILKINS PLANT UNITS 1 & 2
 CONSUMERS POWER COMPANY
 LOCAL CONTROL PANEL IC150
 REACTOR BUILDING H&V PANEL
 ARRANGEMENT

7220	J-922 (C)	7
------	-----------	---

This drawing and the design it contains are the property of DECNTEL. They are hereby loaned and on the borrower's return agreement that they will not be reproduced, copied, altered, published, or used except as authorized by the holder of the document.

RIDS

8302040147

