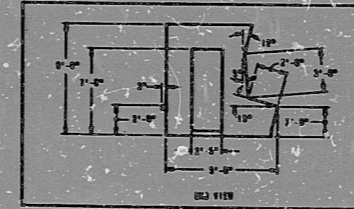
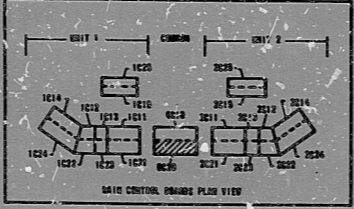


- NOTES:**
1. FOR DEVICE LIST SEE PL-1-228.
 2. WIREPLATE DESIGNATIONS SHOWN ON THIS DRAWING ARE NOT TO BE USED FOR COMPLETE INSTALLATION UNLESS SPECIFICALLY NOTED OTHERWISE.
 3. CLASS 'B' DEVICES WITHIN SEPARATED COMPARTMENTS DESIGNATED 'SEPARATED' SHALL BE SEPARATED BY A 1/2" AIR GAP AND SHALL BE SEPARATED BY A 1/2" AIR GAP AND SHALL BE SEPARATED BY A 1/2" AIR GAP. ALL OTHER DEVICES ARE NOT.
 4. THE DEVICES WITHIN SEPARATED COMPARTMENTS DESIGNATED 'SEPARATED' SHALL BE SEPARATED BY A 1/2" AIR GAP AND SHALL BE SEPARATED BY A 1/2" AIR GAP AND SHALL BE SEPARATED BY A 1/2" AIR GAP. ALL OTHER DEVICES ARE NOT.
- A. ALL DEVICES NOT SHOWN WITHIN CHANNEL SEPARATION BOUNDARIES ARE 'CHAINED' ON 'A' AND ARE NOT.
 C. FIELD TO PLUG EXISTING 'LAYOUT'.



POOR ORIGINAL

3.0-X

PRC APERTURE CARD

REVISED AS INDICATED	DATE	BY	REASON
REVISION 1	10/1/58	J. W. [unclear]	ISSUED FOR CONSTRUCTION
REVISION 2	10/1/58	J. W. [unclear]	ISSUED FOR CONSTRUCTION
REVISION 3	10/1/58	J. W. [unclear]	ISSUED FOR CONSTRUCTION
REVISION 4	10/1/58	J. W. [unclear]	ISSUED FOR CONSTRUCTION
REVISION 5	10/1/58	J. W. [unclear]	ISSUED FOR CONSTRUCTION
REVISION 6	10/1/58	J. W. [unclear]	ISSUED FOR CONSTRUCTION
REVISION 7	10/1/58	J. W. [unclear]	ISSUED FOR CONSTRUCTION
REVISION 8	10/1/58	J. W. [unclear]	ISSUED FOR CONSTRUCTION
REVISION 9	10/1/58	J. W. [unclear]	ISSUED FOR CONSTRUCTION
REVISION 10	10/1/58	J. W. [unclear]	ISSUED FOR CONSTRUCTION

BECKETT
 257 ASSOC. CLERK

ENGLAND PLANT UNITS 1 & 2
CONDENSERS POWER COMPART

CONTROL BOARD OC20
ARRANGEMENT

7220 J-735 (C) 7

RIDS

8302040138

