

CONTROLLED BY USER

USER MUST VERIFY DRAWINGS
TO BE LATEST REVISION PER
DRAWING CONTROL INDEX
PRIOR TO USE AND WEEKLY
DURING USE

SIGNED DATE _____

PRINTED DATE _____

- NOTES:
1. FOR LIST OF GENERAL CONC. NOTES.
SEE DWG. 6750-GST.
 2. CONC. SHOWN SHALL BE GRADE AND DEVELOP 5000 PSI MIN COMPRESSIVE STRENGTH @ 28 DAYS AND HAVE A SLUMP OF 1-1 1/2".
 3. ELEVATIONS SHOWN ARE U.S.G.S. LATITUDE MEAN SEA LEVEL EQUALS 0.00 FEET.
 4. IF FOR FURNISHING @ DELIVERING CONC. SEE SPEC. G-9.
 5. FOR PLACING & CURING CONC. SEE SPEC. G-10.
 6. GOR STEEL MAIN THICKNESS: 3/4" x 12' (NO BOLT) UNIT "W" AND 2 1/4" x 12' ROUGHEN "T".
 7. FOR LOCATION OF COLUMN BASE PLATES SEE LATEST MECH. DRAWINGS.

REFERENCE SPEC. :
6750-C-9 FURNISHING & DELIVERY OF CONCRETE
6750-C-10 FORMING, PLACING, FINISHING, AND
CURING CONCRETE.

REFERENCE DRAWING 31

6750-C-259	CONT. INTERIOR	- PLAN & ELEV. 45'-C
6750-C-260	"	- SECT. @ 3' SECTION
6750-C-262	"	- " @ 8' CONTAIN
6750-C-263	"	- SECTIONS & ELEVATION
6750-C-264	"	- EMBEDDED STEEL DET.
6750-C-269	"	- CABLE SUPPORT PLATE
6750-C-280	"	- RANGEL 38'-0' SECT.
6750-C-281	"	- SWELTING SIGHT DET.

REV. NO.	DATE	DESCRIPTION	DRN	CHK	SPP
3.2.7.6	10-11-10	ADDED SECTION MARK AT FA	PR	RA	
3.2.7.7	10-11-10	ADD. BEARING LIFT RIG LAYDOWN AT D.B.	PR	KE	

C14 CONTAINMENT INTERIOR

TERA PLAN @ ELEV. 69'-0" APERTURE
UNIT # 1

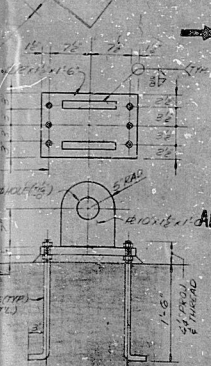
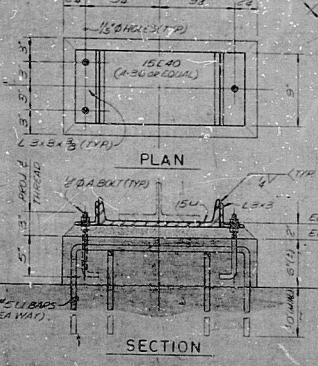
0490
ELECTRIC PRODUCTION PLANT
CALVEET, CLINTON, MISSISSIPPI

BALTIMORE GAS AND ELECTRIC CO.
ELECTRIC ENGINEERING DEPARTMENT

<div style="text-align: center;"> DECATUR ROYAL CORPORATION <small>CONTRACTING DIVISION</small> </div>				
DESIGNED <i>12-24</i>	DATE <i>5-2-54</i>	DECATUR	DRAWING NO.	SCALE <i>1/4"</i>

246
CHECKED 13 DATE 5-2-62
APPROVALS
CHIEF ENGINEER DATE 10-26-62
C-260
61-760-E

12	13
----	----



8108110245

