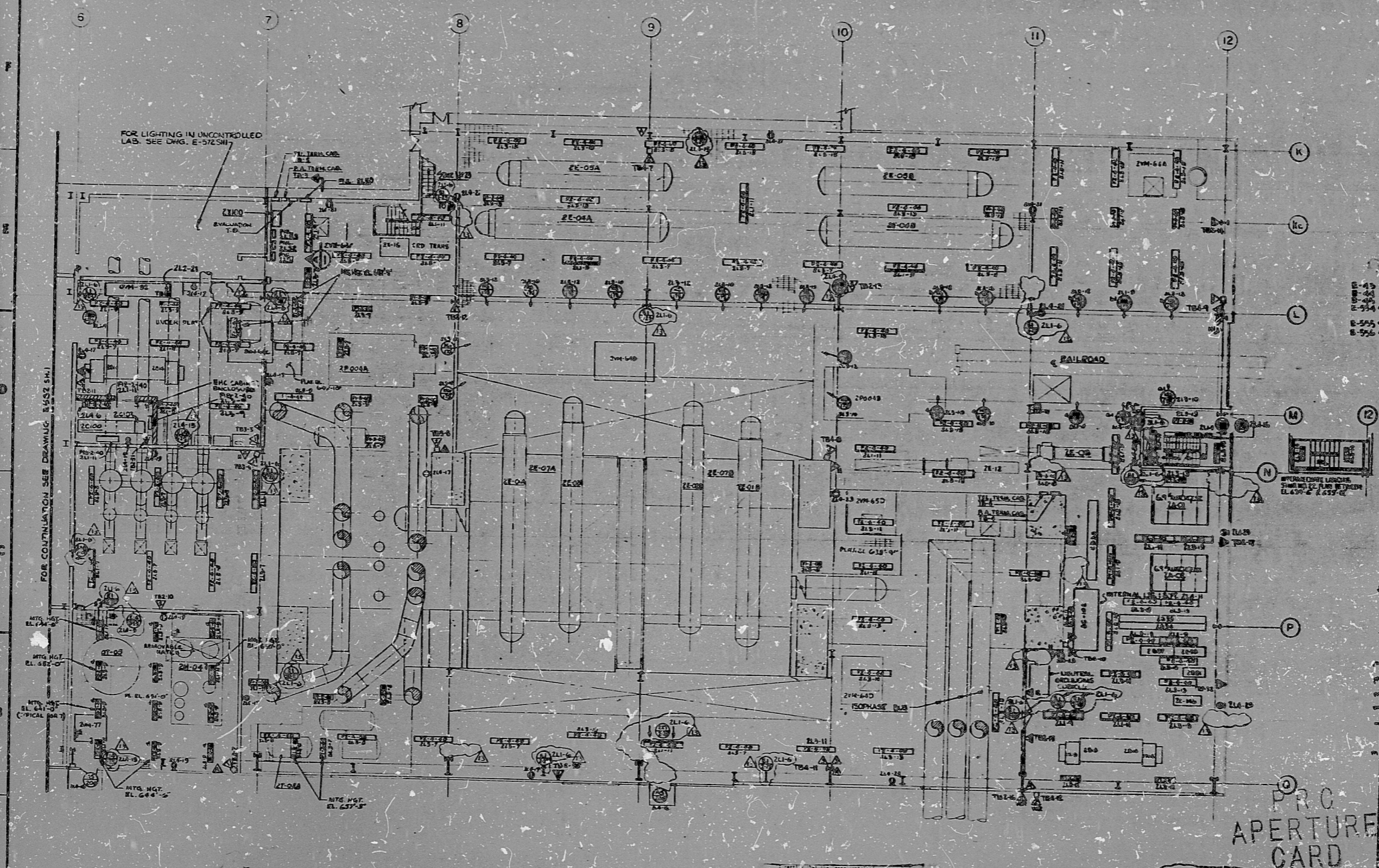
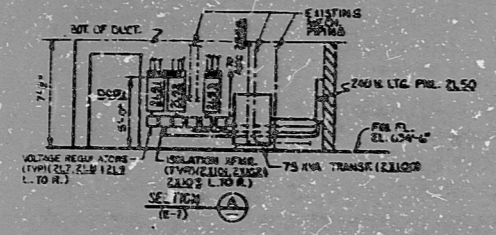
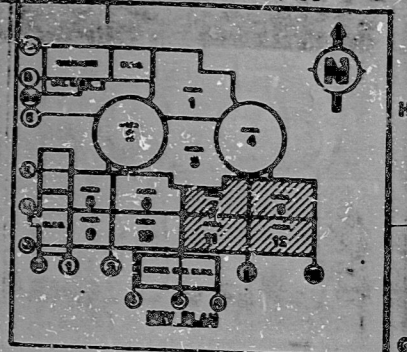


E-586 SH.10F1



- REFERENCE DRAWINGS**
- E-43 COMMUNICATIONS SHEET NOTS, SYMBOLS AND LEGEND
 - E-44 LIGHTING NOTES, SYMBOLS AND LEGEND
 - E-45 LIGHTING PANEL, SYMBOLS AND LEGEND
 - E-514 COMMUNICATIONS PANEL, SYMBOLS AND LEGEND
 - E-515 EMERGENCY EVACUATION ALARM SYSTEMS
 - E-516 COMMUNICATIONS PANEL, SYMBOLS AND LEGEND
 - E-517 COMMUNICATIONS PANEL, SYMBOLS AND LEGEND
 - E-518 COMMUNICATIONS PANEL, SYMBOLS AND LEGEND

| NO. | REV. | DESCRIPTION | DATE | BY | CHKD. |
|-----|------|-----------------------------|------|----|-------|
| 1 | | REV. EMERGENCY LIGHTING | | | |
| 2 | | REVISIONS TO E-586 SH.10F1 | | | |
| 3 | | ADDED SHEETS FOR REV. DUCTS | | | |
| 4 | | ADDED SHEETS FOR REV. DUCTS | | | |
| 5 | | ADDED SHEETS FOR REV. DUCTS | | | |
| 6 | | ADDED SHEETS FOR REV. DUCTS | | | |
| 7 | | ADDED SHEETS FOR REV. DUCTS | | | |
| 8 | | ADDED SHEETS FOR REV. DUCTS | | | |
| 9 | | ADDED SHEETS FOR REV. DUCTS | | | |
| 10 | | ADDED SHEETS FOR REV. DUCTS | | | |
| 11 | | ADDED SHEETS FOR REV. DUCTS | | | |
| 12 | | ADDED SHEETS FOR REV. DUCTS | | | |
| 13 | | ADDED SHEETS FOR REV. DUCTS | | | |
| 14 | | ADDED SHEETS FOR REV. DUCTS | | | |
| 15 | | ADDED SHEETS FOR REV. DUCTS | | | |
| 16 | | ADDED SHEETS FOR REV. DUCTS | | | |
| 17 | | ADDED SHEETS FOR REV. DUCTS | | | |
| 18 | | ADDED SHEETS FOR REV. DUCTS | | | |
| 19 | | ADDED SHEETS FOR REV. DUCTS | | | |
| 20 | | ADDED SHEETS FOR REV. DUCTS | | | |
| 21 | | ADDED SHEETS FOR REV. DUCTS | | | |
| 22 | | ADDED SHEETS FOR REV. DUCTS | | | |
| 23 | | ADDED SHEETS FOR REV. DUCTS | | | |
| 24 | | ADDED SHEETS FOR REV. DUCTS | | | |
| 25 | | ADDED SHEETS FOR REV. DUCTS | | | |
| 26 | | ADDED SHEETS FOR REV. DUCTS | | | |
| 27 | | ADDED SHEETS FOR REV. DUCTS | | | |
| 28 | | ADDED SHEETS FOR REV. DUCTS | | | |
| 29 | | ADDED SHEETS FOR REV. DUCTS | | | |
| 30 | | ADDED SHEETS FOR REV. DUCTS | | | |
| 31 | | ADDED SHEETS FOR REV. DUCTS | | | |
| 32 | | ADDED SHEETS FOR REV. DUCTS | | | |
| 33 | | ADDED SHEETS FOR REV. DUCTS | | | |
| 34 | | ADDED SHEETS FOR REV. DUCTS | | | |
| 35 | | ADDED SHEETS FOR REV. DUCTS | | | |
| 36 | | ADDED SHEETS FOR REV. DUCTS | | | |
| 37 | | ADDED SHEETS FOR REV. DUCTS | | | |
| 38 | | ADDED SHEETS FOR REV. DUCTS | | | |
| 39 | | ADDED SHEETS FOR REV. DUCTS | | | |
| 40 | | ADDED SHEETS FOR REV. DUCTS | | | |
| 41 | | ADDED SHEETS FOR REV. DUCTS | | | |
| 42 | | ADDED SHEETS FOR REV. DUCTS | | | |
| 43 | | ADDED SHEETS FOR REV. DUCTS | | | |
| 44 | | ADDED SHEETS FOR REV. DUCTS | | | |
| 45 | | ADDED SHEETS FOR REV. DUCTS | | | |
| 46 | | ADDED SHEETS FOR REV. DUCTS | | | |
| 47 | | ADDED SHEETS FOR REV. DUCTS | | | |
| 48 | | ADDED SHEETS FOR REV. DUCTS | | | |
| 49 | | ADDED SHEETS FOR REV. DUCTS | | | |
| 50 | | ADDED SHEETS FOR REV. DUCTS | | | |
| 51 | | ADDED SHEETS FOR REV. DUCTS | | | |
| 52 | | ADDED SHEETS FOR REV. DUCTS | | | |
| 53 | | ADDED SHEETS FOR REV. DUCTS | | | |
| 54 | | ADDED SHEETS FOR REV. DUCTS | | | |
| 55 | | ADDED SHEETS FOR REV. DUCTS | | | |
| 56 | | ADDED SHEETS FOR REV. DUCTS | | | |
| 57 | | ADDED SHEETS FOR REV. DUCTS | | | |
| 58 | | ADDED SHEETS FOR REV. DUCTS | | | |
| 59 | | ADDED SHEETS FOR REV. DUCTS | | | |
| 60 | | ADDED SHEETS FOR REV. DUCTS | | | |
| 61 | | ADDED SHEETS FOR REV. DUCTS | | | |
| 62 | | ADDED SHEETS FOR REV. DUCTS | | | |
| 63 | | ADDED SHEETS FOR REV. DUCTS | | | |
| 64 | | ADDED SHEETS FOR REV. DUCTS | | | |
| 65 | | ADDED SHEETS FOR REV. DUCTS | | | |
| 66 | | ADDED SHEETS FOR REV. DUCTS | | | |
| 67 | | ADDED SHEETS FOR REV. DUCTS | | | |
| 68 | | ADDED SHEETS FOR REV. DUCTS | | | |
| 69 | | ADDED SHEETS FOR REV. DUCTS | | | |
| 70 | | ADDED SHEETS FOR REV. DUCTS | | | |
| 71 | | ADDED SHEETS FOR REV. DUCTS | | | |
| 72 | | ADDED SHEETS FOR REV. DUCTS | | | |
| 73 | | ADDED SHEETS FOR REV. DUCTS | | | |
| 74 | | ADDED SHEETS FOR REV. DUCTS | | | |
| 75 | | ADDED SHEETS FOR REV. DUCTS | | | |
| 76 | | ADDED SHEETS FOR REV. DUCTS | | | |
| 77 | | ADDED SHEETS FOR REV. DUCTS | | | |
| 78 | | ADDED SHEETS FOR REV. DUCTS | | | |
| 79 | | ADDED SHEETS FOR REV. DUCTS | | | |
| 80 | | ADDED SHEETS FOR REV. DUCTS | | | |
| 81 | | ADDED SHEETS FOR REV. DUCTS | | | |
| 82 | | ADDED SHEETS FOR REV. DUCTS | | | |
| 83 | | ADDED SHEETS FOR REV. DUCTS | | | |
| 84 | | ADDED SHEETS FOR REV. DUCTS | | | |
| 85 | | ADDED SHEETS FOR REV. DUCTS | | | |
| 86 | | ADDED SHEETS FOR REV. DUCTS | | | |
| 87 | | ADDED SHEETS FOR REV. DUCTS | | | |
| 88 | | ADDED SHEETS FOR REV. DUCTS | | | |
| 89 | | ADDED SHEETS FOR REV. DUCTS | | | |
| 90 | | ADDED SHEETS FOR REV. DUCTS | | | |
| 91 | | ADDED SHEETS FOR REV. DUCTS | | | |
| 92 | | ADDED SHEETS FOR REV. DUCTS | | | |
| 93 | | ADDED SHEETS FOR REV. DUCTS | | | |
| 94 | | ADDED SHEETS FOR REV. DUCTS | | | |
| 95 | | ADDED SHEETS FOR REV. DUCTS | | | |
| 96 | | ADDED SHEETS FOR REV. DUCTS | | | |
| 97 | | ADDED SHEETS FOR REV. DUCTS | | | |
| 98 | | ADDED SHEETS FOR REV. DUCTS | | | |
| 99 | | ADDED SHEETS FOR REV. DUCTS | | | |
| 100 | | ADDED SHEETS FOR REV. DUCTS | | | |

PRO APERTURE CARD

30X

BEENTEL
 MIDLAND PLANT UNITS 1 & 2
 CONSUMERS POWER COMPANY
 LIGHTING AND COMMUNICATION
 TURBINE BUILDING UNIT 2
 ELEVATION 634'-6"

726 E-586 SH.10F1/13

Vertical scale markings on the left margin: 11", 9.5", 8.5", 11", 17"

Vertical scale markings on the right margin: 11", 9.5", 8.5", 11", 17"

RIDS

8302040081

