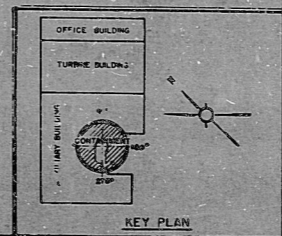
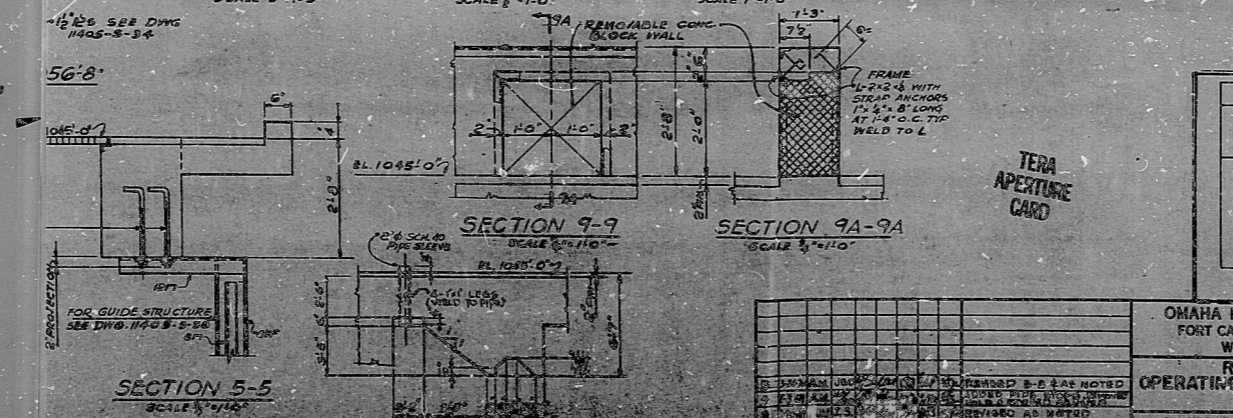
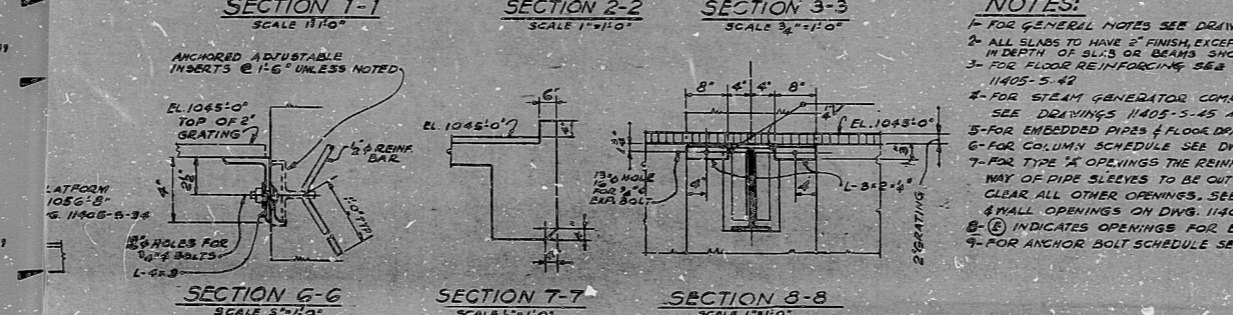


- NOTES:**
- 1- FOR GENERAL NOTES SEE DRAWING 11405-5-49
 - 2- ALL SLABS TO HAVE 2" FINISH EXCEPT AS NOTED FINISH NOT INDICATED
 - 3- FOR FLOOR REINFORCING SEE DRAWINGS 11405-5-41 AND 11405-5-42
 - 4- FOR STEAM GENERATOR COMPARTMENT REINFORCING SEE DRAWINGS 11405-5-45 AND 11405-5-46
 - 5- FOR EMBEDDED PIPES & FLOOR DRAINS SEE MECHANICAL DWGS.
 - 6- FOR COLUMN SCHEDULE SEE DWG. 11405-5-23.
 - 7- FOR TYPE OF OPENINGS THE REINFORCING WILL RUN THROUGH. BARS IN THE WAY OF PIPE SLEEVES TO BE CUT IN THE FIELD. DETAIL REINFORCING CLEAR ALL OTHER OPENINGS. SEE TYPICAL DETAILS FOR SLAB & WALL OPENINGS ON DWG. 11405-5-18.
 - 8- (E) INDICATES OPENINGS FOR ELECTRICAL CONDUITS/PIPS
 - 9- FOR ANCHOR BOLT SCHEDULE SEE DWG. 11405-5-35.



OMAHA PUBLIC POWER DISTRICT FORT CALHOUN STATION UNIT NO. 1 WORK ORDER NO. 1001	
REACTOR PLANT OPERATING FL. PLAN EL. 1060'-0" OUTLINE	
DESIGNED BY: [Name]	CHECKED BY: [Name]
DATE: [Date]	SCALE: 1/4" = 1'-0"
11405-5-19	

DDAFAC

8108100494

2 Cards

