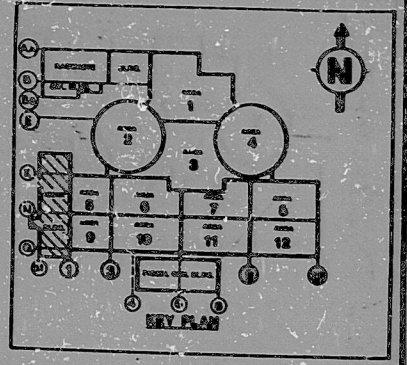
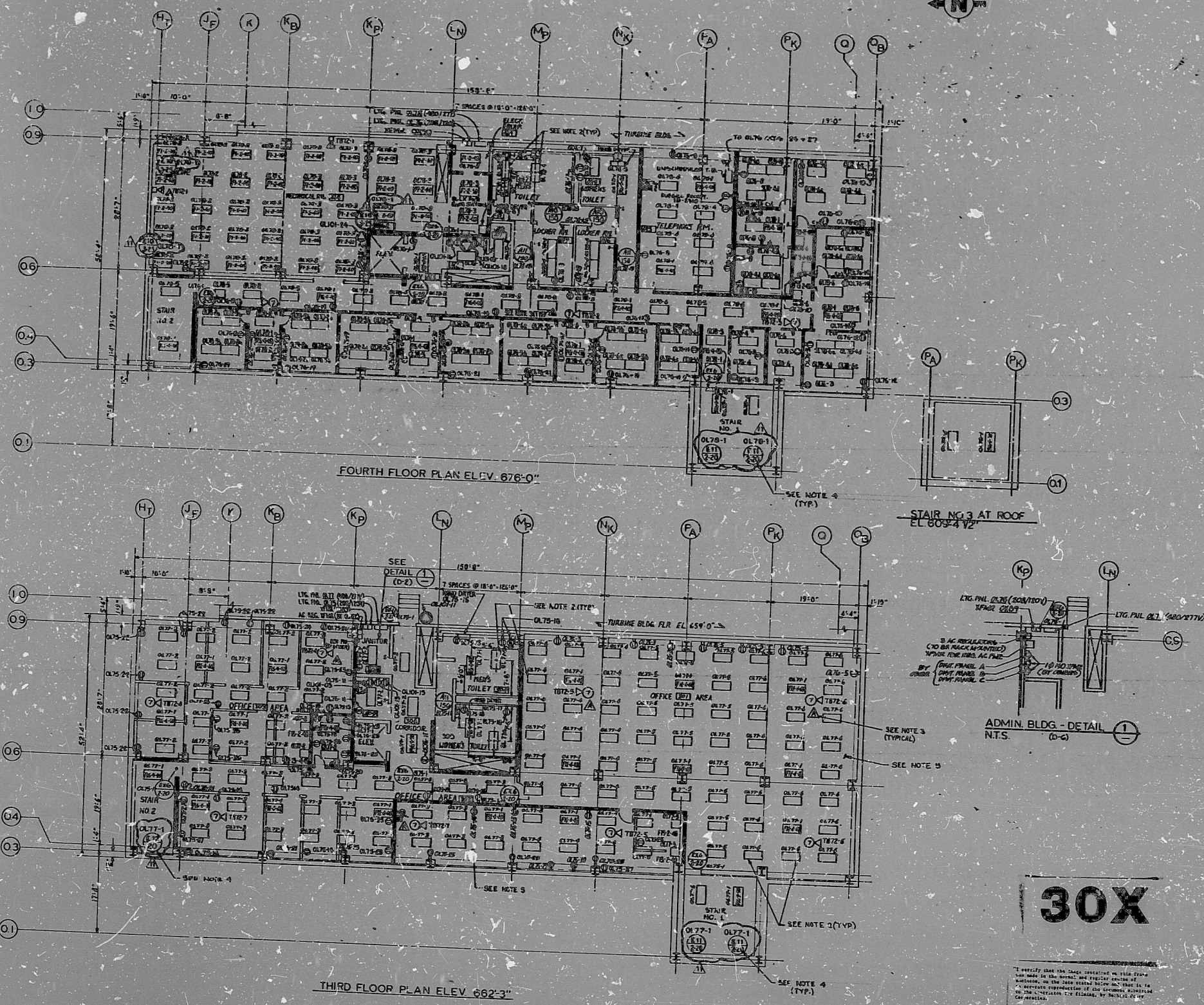


E-579 SH. 2 OF 2



- REFERENCE DRAWINGS**
- E-45 COMMUNICATION SYSTEM NOISE, SYMBOLS & DETAILS
 - E-44 LIGHTING NOTES, SYMBOLS & DETAILS
 - E-43 LIGHTING PANEL SCHEDULES
 - E-579 SH. 1 COMMUNICATION RING DIAGRAM - ALL EMERGENCY EQUIPMENT RINGS SYSTEM
 - E-579 SH. 1 COMMUNICATION RING DIAGRAM - PBX TELEPHONE SYSTEM
 - E-579 SH. 1 COMMUNICATION RING DIAGRAM - INTERCOM & SOUND TRANSMISSION SYSTEM
 - E-579 SH. 1 LIGHTING, COMMUNICATION & COMMUNICATION - BL. 682'-3" & 678'-0"

- NOTES**
- FOR EXACT LOCATIONS OF LIGHTING FIXTURES, REFER TO ARCH. REFLECTED CEILING PLAN DWG. NO. 82-08 & A-D
 - ALL FIXTURES SHOWN ARE TO BE THROUGH-GLASS UNLESS INDICATED OTHERWISE
 - ALL COMMUNICATION APPLIANCES LOCATED IN DESIGNATED CEILING AREAS ARE TO BE FLUSH MOUNTED
 - EMERGENCY LIGHTS IN STAIRS TO BE MOUNTED 7'-6" ABOVE FINISH FLOOR AT EACH INTERMEDIATE LANDING
 - FOR DIMENSIONS, ARRANGEMENT & SPECIFICATIONS, REFER TO DWG. E-579 - C-1

NO.	REVISION	DATE	BY	CHKD.	APP'D.
1	REVISED ENGR. LIGHTING	11/15/58	J. H. HARRIS	J. H. HARRIS	J. H. HARRIS
2	REVISED ENGR. LIGHTING	11/15/58	J. H. HARRIS	J. H. HARRIS	J. H. HARRIS
3	REVISED ENGR. LIGHTING	11/15/58	J. H. HARRIS	J. H. HARRIS	J. H. HARRIS
4	REVISED ENGR. LIGHTING	11/15/58	J. H. HARRIS	J. H. HARRIS	J. H. HARRIS
5	REVISED ENGR. LIGHTING	11/15/58	J. H. HARRIS	J. H. HARRIS	J. H. HARRIS
6	REVISED ENGR. LIGHTING	11/15/58	J. H. HARRIS	J. H. HARRIS	J. H. HARRIS
7	REVISED ENGR. LIGHTING	11/15/58	J. H. HARRIS	J. H. HARRIS	J. H. HARRIS
8	REVISED ENGR. LIGHTING	11/15/58	J. H. HARRIS	J. H. HARRIS	J. H. HARRIS
9	REVISED ENGR. LIGHTING	11/15/58	J. H. HARRIS	J. H. HARRIS	J. H. HARRIS
10	REVISED ENGR. LIGHTING	11/15/58	J. H. HARRIS	J. H. HARRIS	J. H. HARRIS
11	REVISED ENGR. LIGHTING	11/15/58	J. H. HARRIS	J. H. HARRIS	J. H. HARRIS
12	REVISED ENGR. LIGHTING	11/15/58	J. H. HARRIS	J. H. HARRIS	J. H. HARRIS

P.F.C. APERTURE CARD

30X

REVISIONS

NO. DATE BY CHKD. APP'D.

1 11/15/58 J. H. HARRIS J. H. HARRIS J. H. HARRIS

2 11/15/58 J. H. HARRIS J. H. HARRIS J. H. HARRIS

3 11/15/58 J. H. HARRIS J. H. HARRIS J. H. HARRIS

4 11/15/58 J. H. HARRIS J. H. HARRIS J. H. HARRIS

5 11/15/58 J. H. HARRIS J. H. HARRIS J. H. HARRIS

6 11/15/58 J. H. HARRIS J. H. HARRIS J. H. HARRIS

7 11/15/58 J. H. HARRIS J. H. HARRIS J. H. HARRIS

8 11/15/58 J. H. HARRIS J. H. HARRIS J. H. HARRIS

9 11/15/58 J. H. HARRIS J. H. HARRIS J. H. HARRIS

10 11/15/58 J. H. HARRIS J. H. HARRIS J. H. HARRIS

11 11/15/58 J. H. HARRIS J. H. HARRIS J. H. HARRIS

12 11/15/58 J. H. HARRIS J. H. HARRIS J. H. HARRIS

NECHTEL
AND ASSOC. ENGINEERS

1515 W. 11TH ST. CHICAGO, ILL. 60604

CONSUMERS POWER COMPANY

LIGHTING, COMMUNICATION & GROUNDING
OFFICE & SERVICE BLDG.
ELEV. 682'-3" & 678'-0"

NO. DATE BY CHKD. APP'D.

7820 E-579 SH. 2 OF 2 11

RIDS

8302040062

