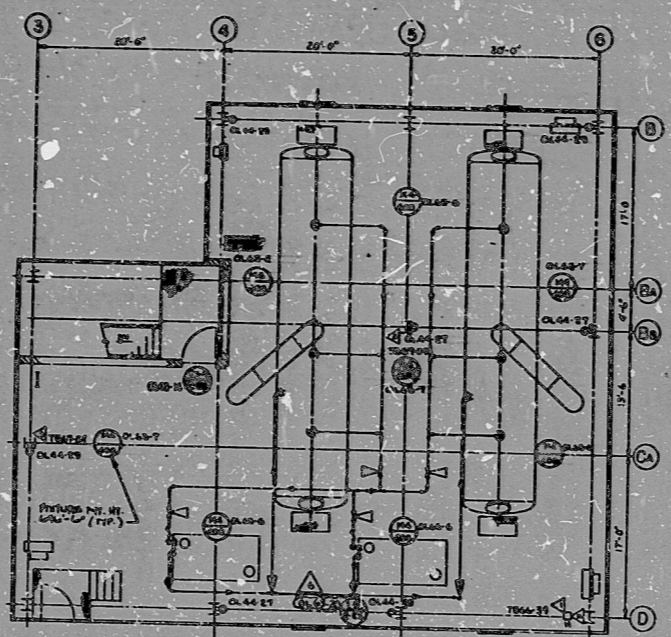
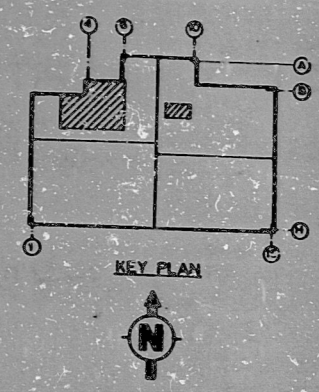


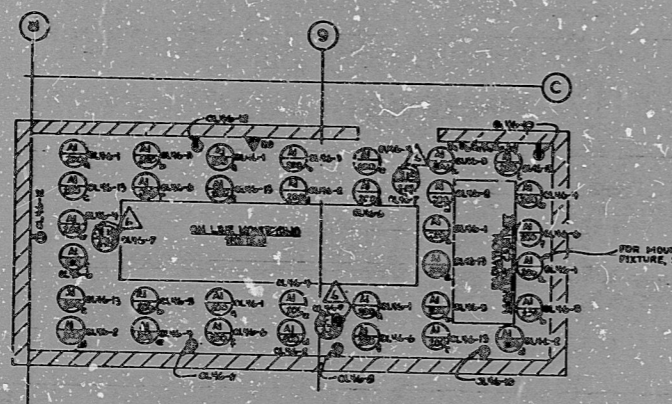
PLAN OF EL 665'-6\"/>
N.T.S.



PLAN OF EL 684'-0\"/>
N.T.S.



NOTES
1. MOUNT ALL FIXTURES AT EL 642'-6" (TYE)
FOR MOUNTING DETAIL SEE E-44-3A-22



PLAN OF EL 634'-0\"/>
SCALE 1/4" = 1'-0"

REFERENCE DRAWINGS
E-43 COMMUNICATION SYSTEM SYMBOLS & DETAILS
E-44 LIGHTING SYMBOLS & DETAILS
E-45 LIGHTING SYMBOLS & DETAILS
E-46 LIGHTING SYMBOLS & DETAILS
E-47 LIGHTING SYMBOLS & DETAILS
E-48 LIGHTING SYMBOLS & DETAILS
E-49 LIGHTING SYMBOLS & DETAILS
E-50 LIGHTING SYMBOLS & DETAILS
E-51 LIGHTING SYMBOLS & DETAILS
E-52 LIGHTING SYMBOLS & DETAILS
E-53 LIGHTING SYMBOLS & DETAILS
E-54 LIGHTING SYMBOLS & DETAILS
E-55 LIGHTING SYMBOLS & DETAILS
E-56 LIGHTING SYMBOLS & DETAILS
E-57 LIGHTING SYMBOLS & DETAILS
E-58 LIGHTING SYMBOLS & DETAILS
E-59 LIGHTING SYMBOLS & DETAILS
E-60 LIGHTING SYMBOLS & DETAILS
E-61 LIGHTING SYMBOLS & DETAILS
E-62 LIGHTING SYMBOLS & DETAILS
E-63 LIGHTING SYMBOLS & DETAILS
E-64 LIGHTING SYMBOLS & DETAILS
E-65 LIGHTING SYMBOLS & DETAILS
E-66 LIGHTING SYMBOLS & DETAILS
E-67 LIGHTING SYMBOLS & DETAILS
E-68 LIGHTING SYMBOLS & DETAILS
E-69 LIGHTING SYMBOLS & DETAILS
E-70 LIGHTING SYMBOLS & DETAILS
E-71 LIGHTING SYMBOLS & DETAILS
E-72 LIGHTING SYMBOLS & DETAILS
E-73 LIGHTING SYMBOLS & DETAILS
E-74 LIGHTING SYMBOLS & DETAILS
E-75 LIGHTING SYMBOLS & DETAILS
E-76 LIGHTING SYMBOLS & DETAILS
E-77 LIGHTING SYMBOLS & DETAILS
E-78 LIGHTING SYMBOLS & DETAILS
E-79 LIGHTING SYMBOLS & DETAILS
E-80 LIGHTING SYMBOLS & DETAILS
E-81 LIGHTING SYMBOLS & DETAILS
E-82 LIGHTING SYMBOLS & DETAILS
E-83 LIGHTING SYMBOLS & DETAILS
E-84 LIGHTING SYMBOLS & DETAILS
E-85 LIGHTING SYMBOLS & DETAILS
E-86 LIGHTING SYMBOLS & DETAILS
E-87 LIGHTING SYMBOLS & DETAILS
E-88 LIGHTING SYMBOLS & DETAILS
E-89 LIGHTING SYMBOLS & DETAILS
E-90 LIGHTING SYMBOLS & DETAILS
E-91 LIGHTING SYMBOLS & DETAILS
E-92 LIGHTING SYMBOLS & DETAILS
E-93 LIGHTING SYMBOLS & DETAILS
E-94 LIGHTING SYMBOLS & DETAILS
E-95 LIGHTING SYMBOLS & DETAILS
E-96 LIGHTING SYMBOLS & DETAILS
E-97 LIGHTING SYMBOLS & DETAILS
E-98 LIGHTING SYMBOLS & DETAILS
E-99 LIGHTING SYMBOLS & DETAILS
E-100 LIGHTING SYMBOLS & DETAILS

REV.	DATE	BY	CHKD.	DESCRIPTION
1				REVISED FOR CONSTRUCTION
2				ISSUED FOR CONSTRUCTION
3				ISSUED FOR CONSTRUCTION
4				ISSUED FOR CONSTRUCTION
5				ISSUED FOR CONSTRUCTION
6				ISSUED FOR CONSTRUCTION
7				ISSUED FOR CONSTRUCTION
8				ISSUED FOR CONSTRUCTION
9				ISSUED FOR CONSTRUCTION
10				ISSUED FOR CONSTRUCTION
11				ISSUED FOR CONSTRUCTION
12				ISSUED FOR CONSTRUCTION
13				ISSUED FOR CONSTRUCTION
14				ISSUED FOR CONSTRUCTION
15				ISSUED FOR CONSTRUCTION
16				ISSUED FOR CONSTRUCTION
17				ISSUED FOR CONSTRUCTION
18				ISSUED FOR CONSTRUCTION
19				ISSUED FOR CONSTRUCTION
20				ISSUED FOR CONSTRUCTION
21				ISSUED FOR CONSTRUCTION
22				ISSUED FOR CONSTRUCTION
23				ISSUED FOR CONSTRUCTION
24				ISSUED FOR CONSTRUCTION
25				ISSUED FOR CONSTRUCTION
26				ISSUED FOR CONSTRUCTION
27				ISSUED FOR CONSTRUCTION
28				ISSUED FOR CONSTRUCTION
29				ISSUED FOR CONSTRUCTION
30				ISSUED FOR CONSTRUCTION
31				ISSUED FOR CONSTRUCTION
32				ISSUED FOR CONSTRUCTION
33				ISSUED FOR CONSTRUCTION
34				ISSUED FOR CONSTRUCTION
35				ISSUED FOR CONSTRUCTION
36				ISSUED FOR CONSTRUCTION
37				ISSUED FOR CONSTRUCTION
38				ISSUED FOR CONSTRUCTION
39				ISSUED FOR CONSTRUCTION
40				ISSUED FOR CONSTRUCTION
41				ISSUED FOR CONSTRUCTION
42				ISSUED FOR CONSTRUCTION
43				ISSUED FOR CONSTRUCTION
44				ISSUED FOR CONSTRUCTION
45				ISSUED FOR CONSTRUCTION
46				ISSUED FOR CONSTRUCTION
47				ISSUED FOR CONSTRUCTION
48				ISSUED FOR CONSTRUCTION
49				ISSUED FOR CONSTRUCTION
50				ISSUED FOR CONSTRUCTION
51				ISSUED FOR CONSTRUCTION
52				ISSUED FOR CONSTRUCTION
53				ISSUED FOR CONSTRUCTION
54				ISSUED FOR CONSTRUCTION
55				ISSUED FOR CONSTRUCTION
56				ISSUED FOR CONSTRUCTION
57				ISSUED FOR CONSTRUCTION
58				ISSUED FOR CONSTRUCTION
59				ISSUED FOR CONSTRUCTION
60				ISSUED FOR CONSTRUCTION
61				ISSUED FOR CONSTRUCTION
62				ISSUED FOR CONSTRUCTION
63				ISSUED FOR CONSTRUCTION
64				ISSUED FOR CONSTRUCTION
65				ISSUED FOR CONSTRUCTION
66				ISSUED FOR CONSTRUCTION
67				ISSUED FOR CONSTRUCTION
68				ISSUED FOR CONSTRUCTION
69				ISSUED FOR CONSTRUCTION
70				ISSUED FOR CONSTRUCTION
71				ISSUED FOR CONSTRUCTION
72				ISSUED FOR CONSTRUCTION
73				ISSUED FOR CONSTRUCTION
74				ISSUED FOR CONSTRUCTION
75				ISSUED FOR CONSTRUCTION
76				ISSUED FOR CONSTRUCTION
77				ISSUED FOR CONSTRUCTION
78				ISSUED FOR CONSTRUCTION
79				ISSUED FOR CONSTRUCTION
80				ISSUED FOR CONSTRUCTION
81				ISSUED FOR CONSTRUCTION
82				ISSUED FOR CONSTRUCTION
83				ISSUED FOR CONSTRUCTION
84				ISSUED FOR CONSTRUCTION
85				ISSUED FOR CONSTRUCTION
86				ISSUED FOR CONSTRUCTION
87				ISSUED FOR CONSTRUCTION
88				ISSUED FOR CONSTRUCTION
89				ISSUED FOR CONSTRUCTION
90				ISSUED FOR CONSTRUCTION
91				ISSUED FOR CONSTRUCTION
92				ISSUED FOR CONSTRUCTION
93				ISSUED FOR CONSTRUCTION
94				ISSUED FOR CONSTRUCTION
95				ISSUED FOR CONSTRUCTION
96				ISSUED FOR CONSTRUCTION
97				ISSUED FOR CONSTRUCTION
98				ISSUED FOR CONSTRUCTION
99				ISSUED FOR CONSTRUCTION
100				ISSUED FOR CONSTRUCTION

30X

PRO APERTURE CARD

SEE THIS DRAWING FOR ELECTRICAL WORK ONLY. FOR ALL OTHER DATA REFER TO APPLICABLE DRAWINGS.

722C	E575 SH 4 OF 4 C
------	------------------

RIDS

8302030595

