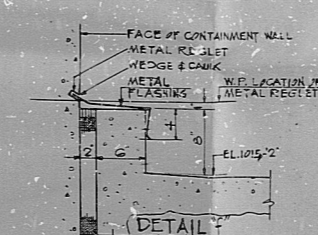
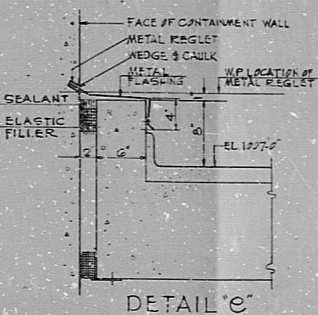
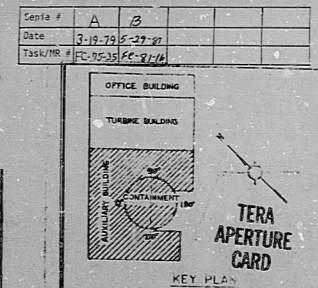


**NOTES**

1. For Mech. detail on drawing location in order to be done, see 2005-10-10
2. For installation of Removable Slides in Tank, see Area of Tank, see 5K-57776



NO.	DESCRIPTION	DATE	BY	CHECKED
1	ISSUED FOR PERMITS	10/10/57	J.M.	J.M.
2	ISSUED FOR CONTRACT # 754	10/10/57	J.M.	J.M.
3	ISSUED FOR CONTRACT # 754	10/10/57	J.M.	J.M.
4	ISSUED FOR CONTRACT # 754	10/10/57	J.M.	J.M.
5	ISSUED FOR CONTRACT # 754	10/10/57	J.M.	J.M.
6	ISSUED FOR CONTRACT # 754	10/10/57	J.M.	J.M.
7	ISSUED FOR CONTRACT # 754	10/10/57	J.M.	J.M.
8	ISSUED FOR CONTRACT # 754	10/10/57	J.M.	J.M.
9	ISSUED FOR CONTRACT # 754	10/10/57	J.M.	J.M.
10	ISSUED FOR CONTRACT # 754	10/10/57	J.M.	J.M.



OMAHA PUBLIC POWER DISTRICT  
 FORT CALHOUN STATION UNIT NO. 1  
 WORK ORDER NO. 1001  
 PRIMARY PLANT  
 GROUND FLOOR PLAN

CONSULTING ENGINEERS  
 GEORGE HILL DUNHAM & RICHARDSON, INC.  
 OMAHA - NEW YORK

SCALE: 1/4" = 1'-0" AS NOTED  
 11405-A-6

88  
 22  
 17  
 11  
 8.5  
 11  
 17  
 22  
 34

88  
 22  
 17  
 11  
 8.5  
 11  
 17  
 22  
 34

DB AFAC

8108100484

2 cards

