

11

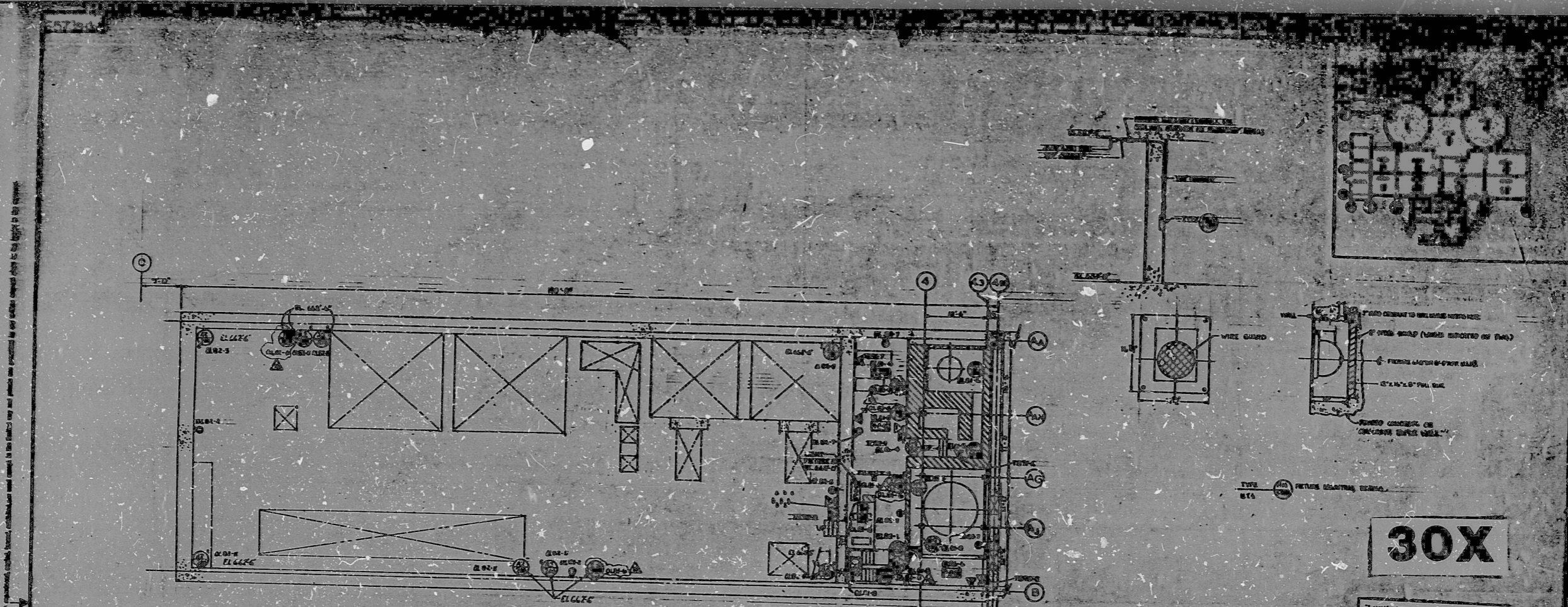
11

8.5"

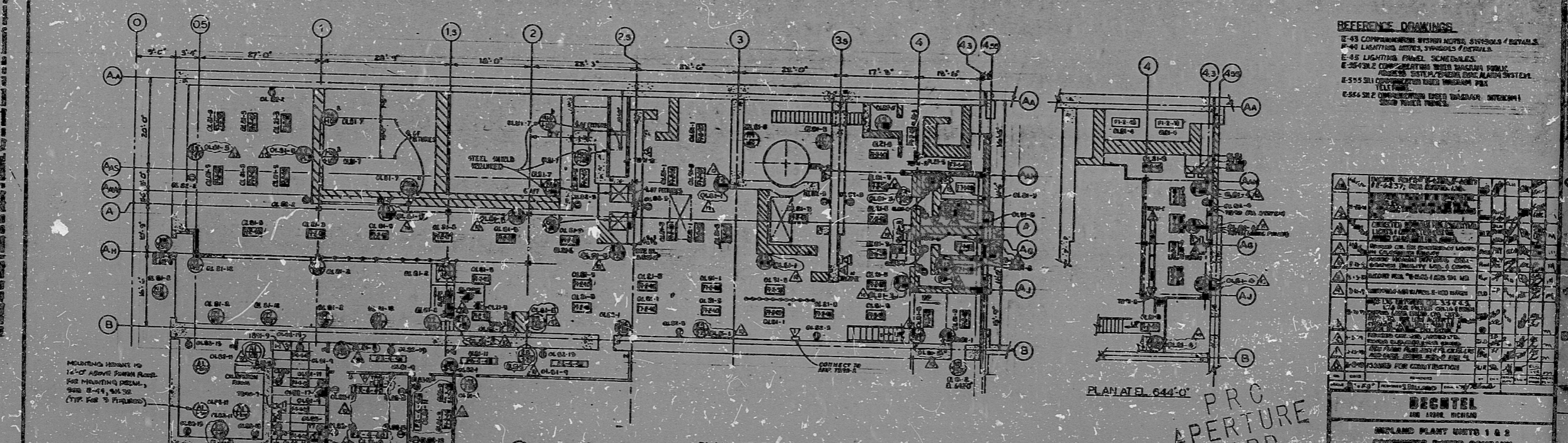
8.5"

11"

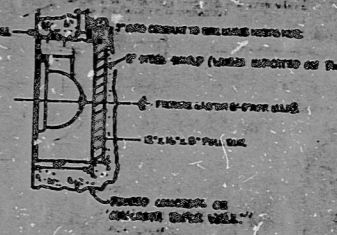
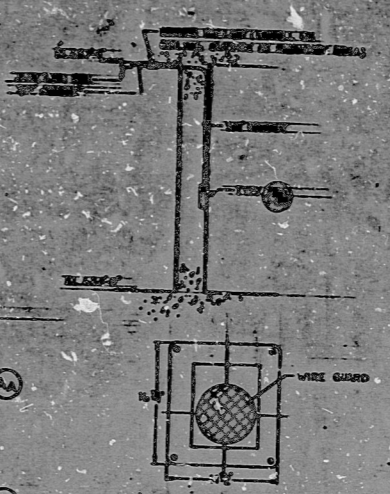
17"



PLAN AT EL. 652'-0"



PLAN AT EL. 634'-6"

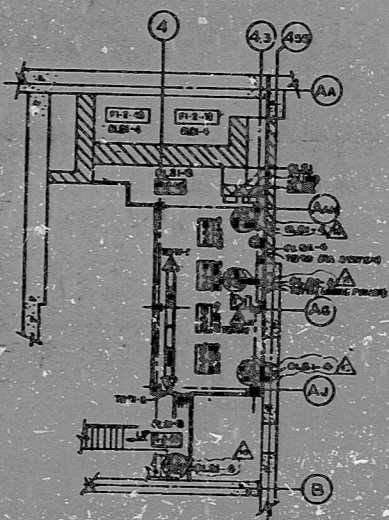


TYPE RETURN EXHAUST SYSTEM

30X

THIS DRAWING IS THE PROPERTY OF THE UNITED STATES GOVERNMENT AND IS LOANED TO YOU BY THE NATIONAL ARCHIVES. IT IS TO BE RETURNED TO THE NATIONAL ARCHIVES AT THE END OF THE LOAN PERIOD. IT IS NOT TO BE REPRODUCED OR TRANSMITTED IN ANY FORM OR BY ANY MEANS, ELECTRONIC OR MECHANICAL, INCLUDING PHOTOCOPYING, RECORDING, OR BY ANY INFORMATION STORAGE AND RETRIEVAL SYSTEM.

- REFERENCE DRAWINGS
- E-43 COMMUNICATIONS WIRING NOTES, SYMBOLS & DETAILS
 - E-44 LIGHTING NOTES, SYMBOLS & DETAILS
 - E-45 LIGHTING PANEL SCHEDULES
 - E-46 ELECTRICAL COMMUNICATIONS WIRING SYMBOLS & DETAILS
 - E-47 ELECTRICAL COMMUNICATIONS WIRING SYMBOLS & DETAILS
 - E-48 ELECTRICAL COMMUNICATIONS WIRING SYMBOLS & DETAILS
 - E-49 ELECTRICAL COMMUNICATIONS WIRING SYMBOLS & DETAILS
 - E-50 ELECTRICAL COMMUNICATIONS WIRING SYMBOLS & DETAILS
 - E-51 ELECTRICAL COMMUNICATIONS WIRING SYMBOLS & DETAILS
 - E-52 ELECTRICAL COMMUNICATIONS WIRING SYMBOLS & DETAILS
 - E-53 ELECTRICAL COMMUNICATIONS WIRING SYMBOLS & DETAILS
 - E-54 ELECTRICAL COMMUNICATIONS WIRING SYMBOLS & DETAILS



PLAN AT EL. 644'-0"

PRC APERTURE CARD

THIS DRAWING IS THE PROPERTY OF THE UNITED STATES GOVERNMENT AND IS LOANED TO YOU BY THE NATIONAL ARCHIVES. IT IS TO BE RETURNED TO THE NATIONAL ARCHIVES AT THE END OF THE LOAN PERIOD. IT IS NOT TO BE REPRODUCED OR TRANSMITTED IN ANY FORM OR BY ANY MEANS, ELECTRONIC OR MECHANICAL, INCLUDING PHOTOCOPYING, RECORDING, OR BY ANY INFORMATION STORAGE AND RETRIEVAL SYSTEM.

NO.	DESCRIPTION	DATE	BY
1	AS SHOWN		
2	REVISED		
3	REVISED		
4	REVISED		
5	REVISED		
6	REVISED		
7	REVISED		
8	REVISED		
9	REVISED		
10	REVISED		
11	REVISED		
12	REVISED		
13	REVISED		
14	REVISED		
15	REVISED		
16	REVISED		
17	REVISED		
18	REVISED		
19	REVISED		
20	REVISED		
21	REVISED		
22	REVISED		
23	REVISED		
24	REVISED		
25	REVISED		
26	REVISED		
27	REVISED		
28	REVISED		
29	REVISED		
30	REVISED		
31	REVISED		
32	REVISED		
33	REVISED		
34	REVISED		
35	REVISED		
36	REVISED		
37	REVISED		
38	REVISED		
39	REVISED		
40	REVISED		
41	REVISED		
42	REVISED		
43	REVISED		
44	REVISED		
45	REVISED		
46	REVISED		
47	REVISED		
48	REVISED		
49	REVISED		
50	REVISED		
51	REVISED		
52	REVISED		
53	REVISED		
54	REVISED		
55	REVISED		
56	REVISED		
57	REVISED		
58	REVISED		
59	REVISED		
60	REVISED		
61	REVISED		
62	REVISED		
63	REVISED		
64	REVISED		
65	REVISED		
66	REVISED		
67	REVISED		
68	REVISED		
69	REVISED		
70	REVISED		
71	REVISED		
72	REVISED		
73	REVISED		
74	REVISED		
75	REVISED		
76	REVISED		
77	REVISED		
78	REVISED		
79	REVISED		
80	REVISED		
81	REVISED		
82	REVISED		
83	REVISED		
84	REVISED		
85	REVISED		
86	REVISED		
87	REVISED		
88	REVISED		
89	REVISED		
90	REVISED		
91	REVISED		
92	REVISED		
93	REVISED		
94	REVISED		
95	REVISED		
96	REVISED		
97	REVISED		
98	REVISED		
99	REVISED		
100	REVISED		

BECHTEL
AND ASSOCIATES
ENCLAVE PLANT WASTE 1 & 2
COMMERCIAL POWER COMPANY
LIGHTING & COMMUNICATION
SOLID WASTE BLDG. & HEALTH PHYSICS
CALIBRATION FACILITY EL. 634'-6" & 652'-0"
DATE 10/20/54
E-573 SH10F1 10

11

11

8.5"

8.5"

11"

17"

RIDS

8302030583

