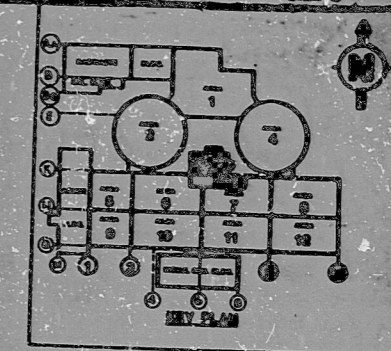
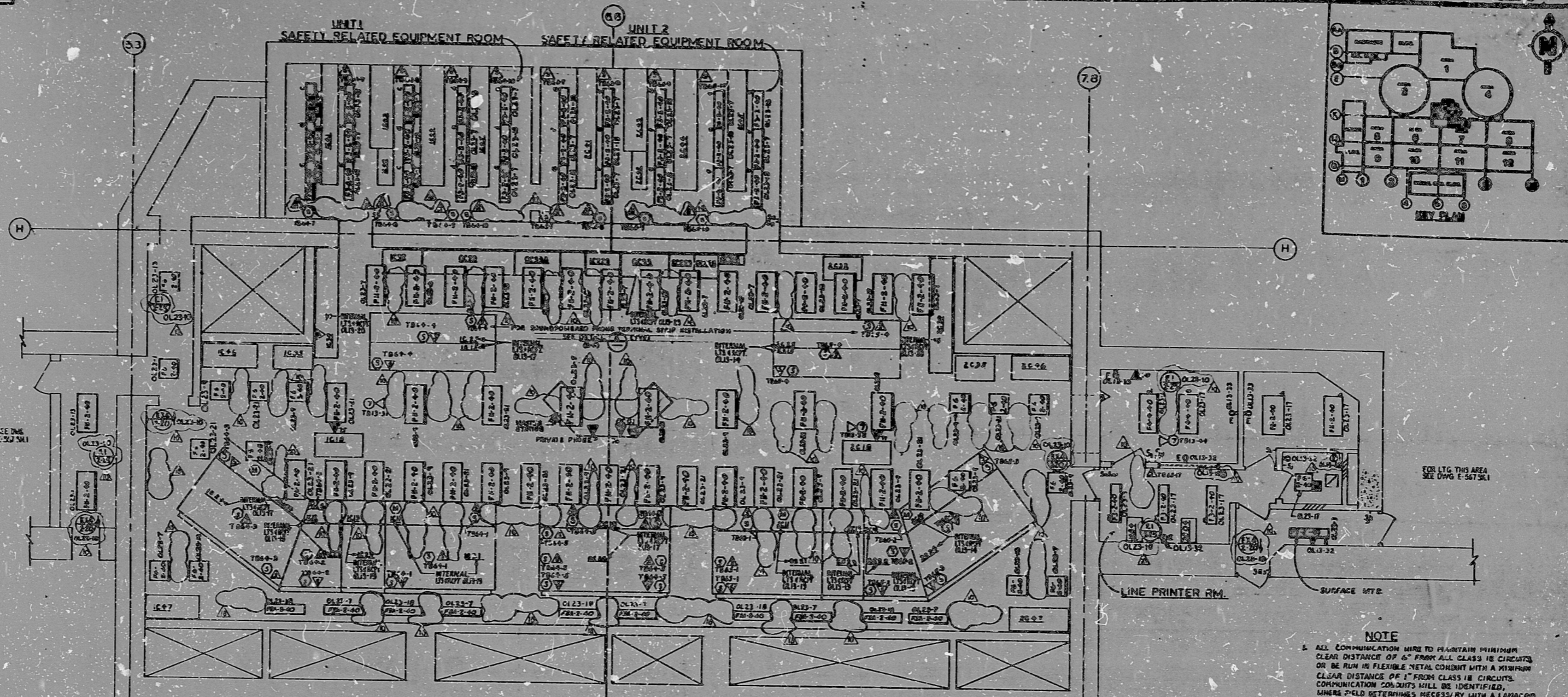


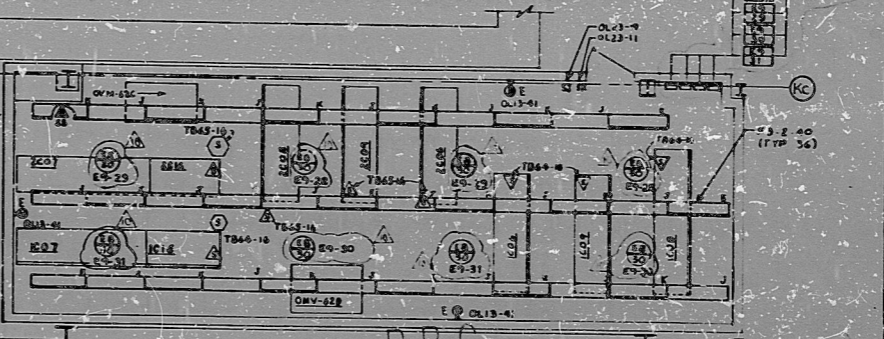
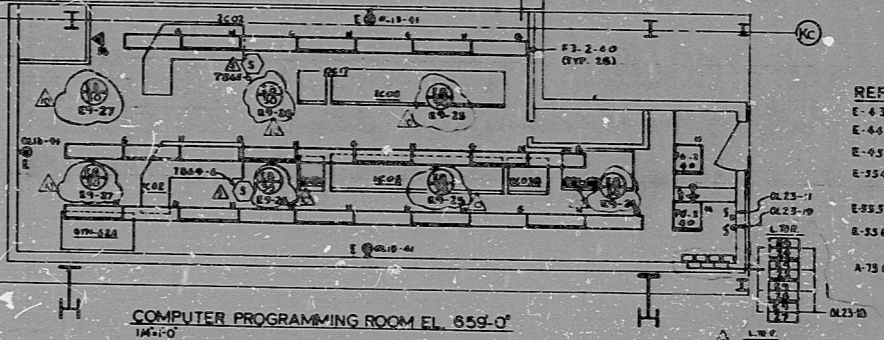
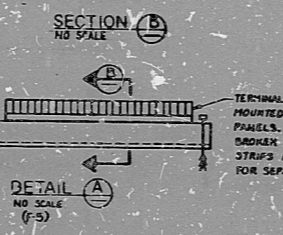
E-569 SH1 OF 1



NOTE

1. ALL COMMUNICATION WIRE TO MAINTAIN MINIMUM CLEAR DISTANCE OF 6" FROM ALL CLASS 1B CIRCUITS OR BE RUN IN FLEXIBLE METAL CONDUIT WITH A MINIMUM CLEAR DISTANCE OF 1" FROM CLASS 1B CIRCUITS. COMMUNICATION CONDUITS SHALL BE IDENTIFIED. UNLESS FIELD DETERMINES NECESSARY WITH A LAMP-COD TAG TIE WIRE TO THE CONDUIT.

- REFERENCE DRAWINGS**
- E-4.3 COMMUNICATION SYSTEM NOTES / DETAILS
 - E-4.6 LIGHTING NOTES BY SYMBOLS / DETAILS
 - E-9.5 LIGHTING PANEL SCHEDULE
 - E-35.0 SMI COMMUNICATION RISER DISMANT - PUBLIC ADDRESS AND EMERGENCY EVACUATION ALARM SYSTEMS
 - E-35.5 SMI COMMUNICATION RISER DISMANT - PAX TELEPHONES
 - E-35.6 SMI COMMUNICATION RISER DISMANT - INTERCOM AND SOUND REINFORCED PHONE
 - A-75.00 REFLECTED CEILING PLANS



NO.	DESCRIPTION	DATE	BY	CHKD.
1	ISSUED FOR CONSTRUCTION	10/15/68	JW	JW
2	REVISED	10/15/68	JW	JW
3	REVISED	10/15/68	JW	JW
4	REVISED	10/15/68	JW	JW
5	REVISED	10/15/68	JW	JW
6	REVISED	10/15/68	JW	JW
7	REVISED	10/15/68	JW	JW
8	REVISED	10/15/68	JW	JW
9	REVISED	10/15/68	JW	JW
10	REVISED	10/15/68	JW	JW
11	REVISED	10/15/68	JW	JW
12	REVISED	10/15/68	JW	JW

BECHTEL
480 ARBOR VILLE, MICHIGAN

SHIHLAND PLANT UNITS 1 & 2
CONSUMERS POWER COMPANY

LIGHTING AND COMMUNICATIONS
CONTROL ROOM

AWI
DATE: 10/15/68
DRAWING NO.: E-569 SH1 OF 1
REV.: 10

30X

COMPUTER INPUT ROOM
APERTURE CARD

THIS DRAWING IS FOR ELECTRICAL WORK ONLY FOR ALL OTHER DATA REFER TO APPLICABLE DRAWINGS

THIS DRAWING IS THE PROPERTY OF BECHTEL. IT IS TO BE USED ONLY FOR THE PROJECT AND SITE SPECIFICALLY IDENTIFIED HEREON. IT IS NOT TO BE REPRODUCED, COPIED, OR TRANSMITTED IN ANY FORM OR BY ANY MEANS, ELECTRONIC OR MECHANICAL, WITHOUT THE WRITTEN PERMISSION OF BECHTEL.

RIDS

8302030572

