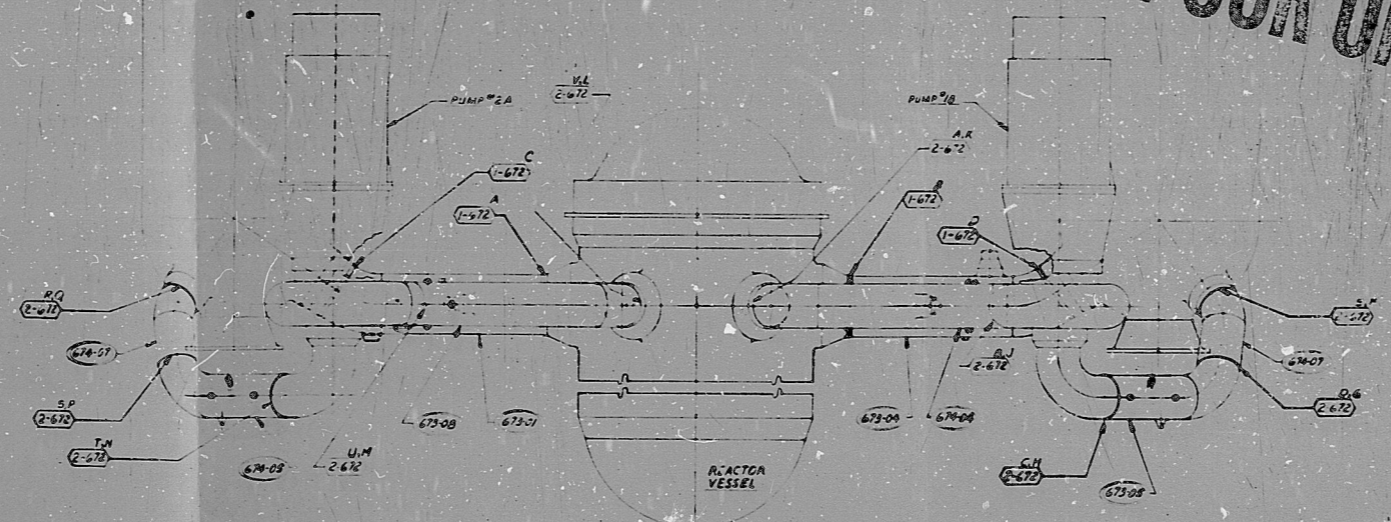
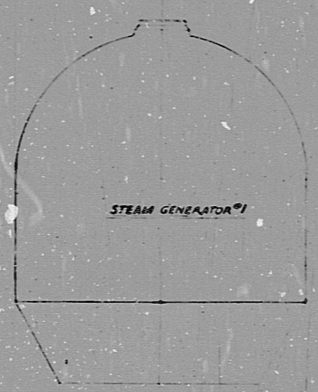
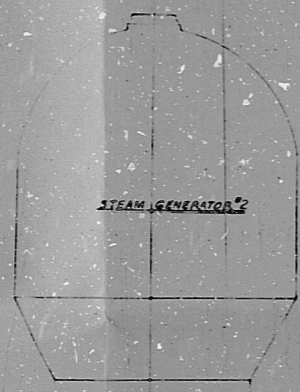
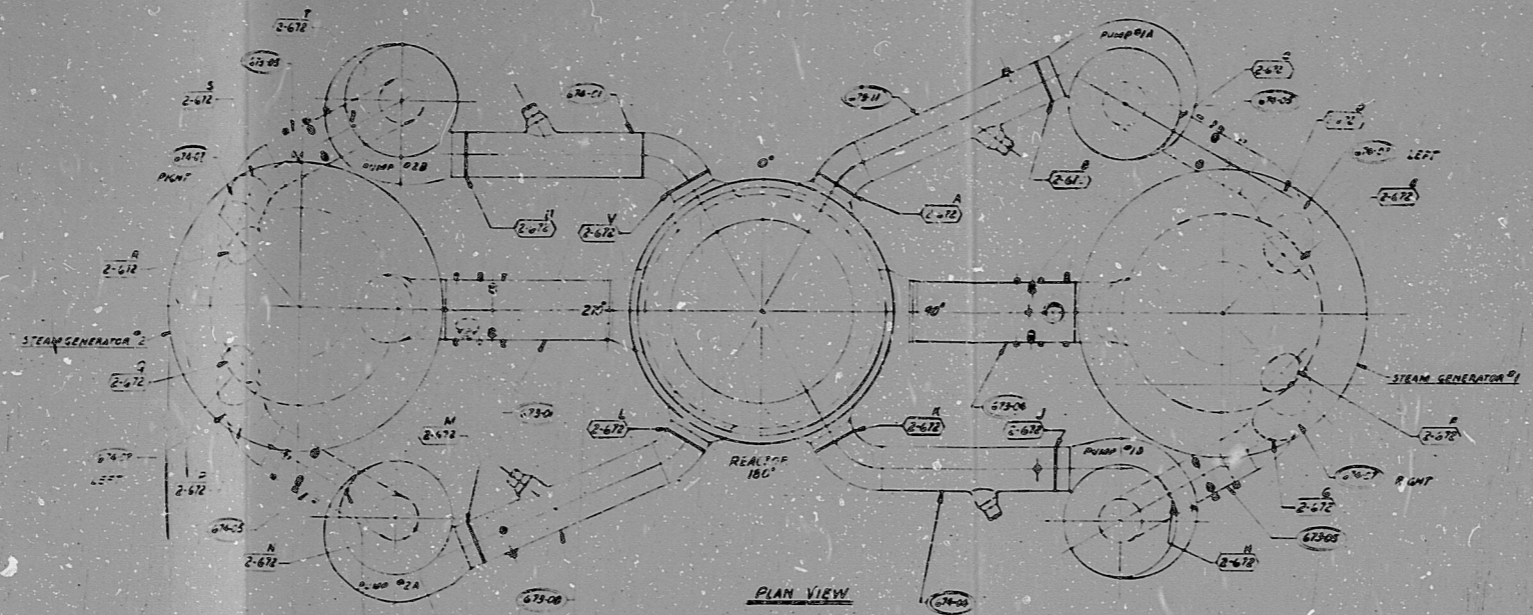


E-232-672



**POOR ORIGINAL**

TERA  
APERTURE  
CARD

GENERAL NOTES		REFERENCE DRAWINGS		WELD TABLE	
1. ALL DIMENSIONS ARE REFERENCED TO THE CENTERLINE UNLESS OTHERWISE SPECIFIED. 2. DESIGN PRESSURE: 1500 PSIA 3. DESIGN TEMP: 540°F AND 550°F 4. ALL FABRICATION SHALL BE IN ACCORDANCE WITH ASME BOILER CODE SECTION III.		NO. TITLE 1. PIPING ASSY & DETAILS 2. PIPING ASSY & DETAILS	DWS NO. WELDING PROC. E-232-672 W-232-672 E-232-672 W-232-672	ALL DIMENSIONS APPLY AT REFERENCE TEMP OF 65°F UNLESS NOTED OTHERWISE. TOLERANCE ON FRACTIONS DECIMALS ANGLES UNLESS NOTED	

REV	NO	NO	NO	NO	NO	NO	NO	NO	NO
DATE	DESCRIPTION	DATE	APPROVED	DATE	APPROVED	DATE	APPROVED	DATE	APPROVED

COMBUSTION ENGINEERING, INC.  
CHATTANOOGA DIVISION  
GENERAL APERTURE CARD  
CONS. VES. POWER CO.  
E 232-672-05

SECTION 3, QUESTIONS 2, 5 & 6

11  
11  
8.5"  
11"  
17"



8108100471

