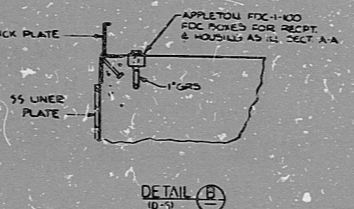
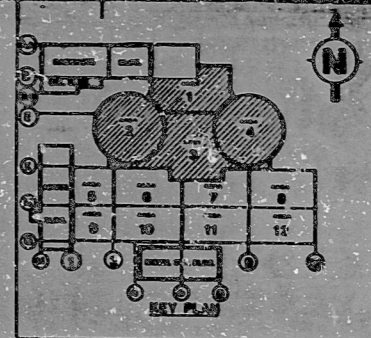
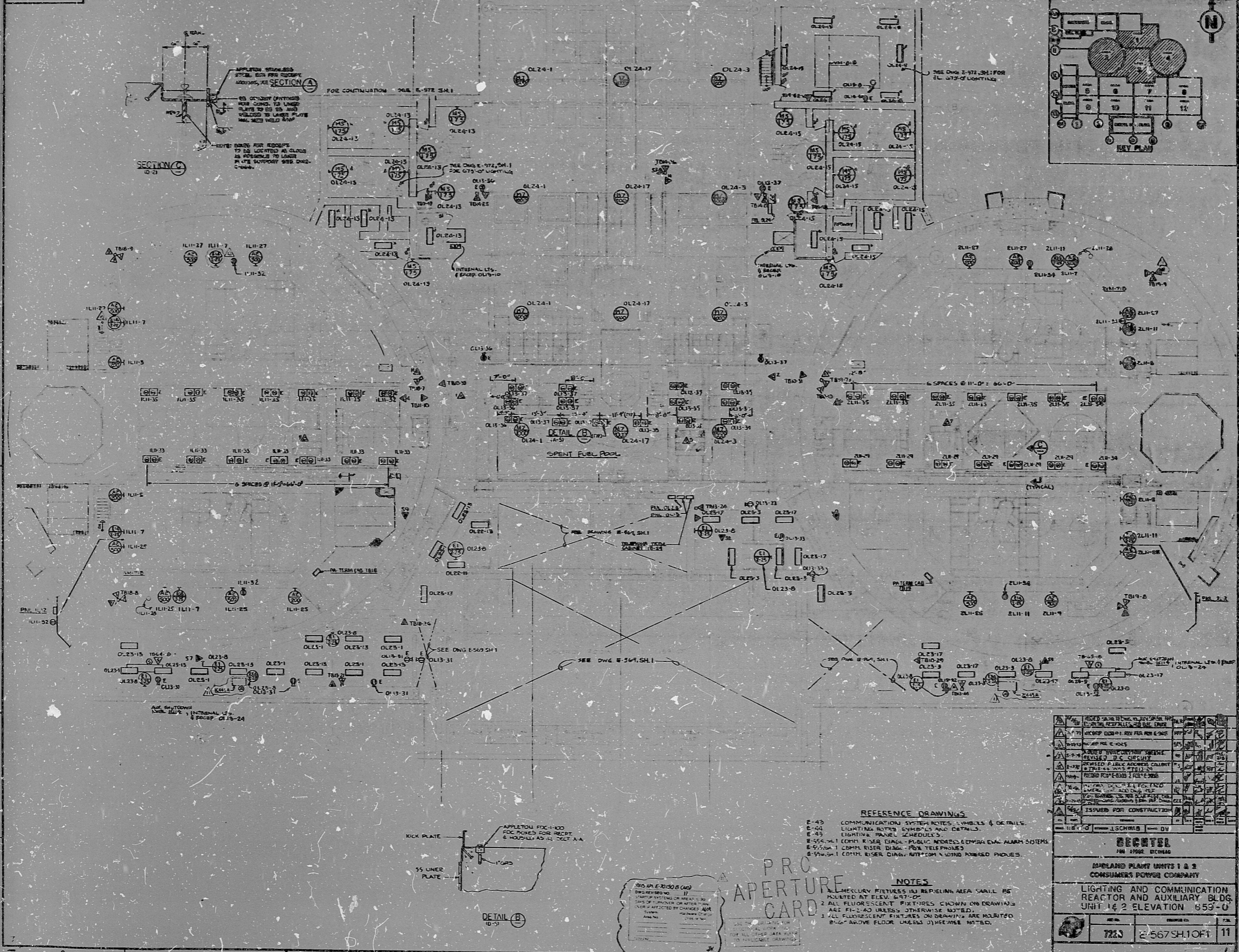


E-567SH1OF1



NO. IN E-21508 (40)
 DATE: 11/11/54
 DRAWN BY: J. J. [unclear]
 CHECKED BY: [unclear]
 APPROVED BY: [unclear]
 TITLE: [unclear]

PRO
 APERTURE
 CARD

REFERENCE DRAWINGS:
 E-49 COMMUNICATION SYSTEM NOTES, SYMBOLS & DETAILS.
 E-44 LIGHTING NOTES, SYMBOLS AND DETAILS.
 E-45 LIGHTING PANEL SCHEDULES.
 E-56-111 CONN. R. USER DIAG. PUBLIC ADDRESS & EMERGENCY ALARM SYSTEM.
 E-57-10-1 CONN. R. USER DIAG. PBL. TELEPHONES.
 E-56-5-1 CONN. R. USER DIAG. RPT. FOR A SOUND POWERED PHONES.

NOTES:
 1. ALL MERCURY FIXTURES IN REPELING AREA SHALL BE
 INSTALLED BY ELEV. 847'-00".
 2. ALL FLUORESCENT FIXTURES SHOWN ON DRAWING
 ARE F12-40 UNLESS OTHERWISE NOTED.
 3. ALL FLUORESCENT FIXTURES ON DRAWING ARE MOUNTED
 8'-0" ABOVE FLOOR UNLESS OTHERWISE NOTED.

1	REVISIONS	DATE	BY	REASON
1	ISSUED FOR CONSTRUCTION			

SECRET

LANL PLANT UNITS 1 & 2
 CONSUMERS POWER COMPANY

LIGHTING AND COMMUNICATION
 REACTOR AND AUXILIARY BLDG.
 UNIT 1 & 2 ELEVATION 859'-0"

7223 E-567SH1OF1 11

RIDS

8302030565

