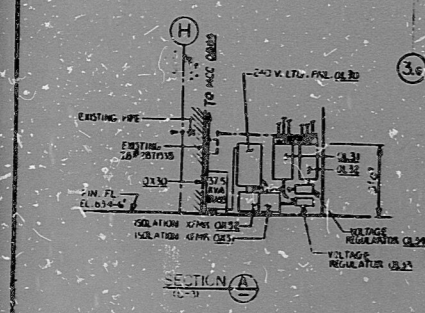




17"
11"
8.5"
8.5"
11"
17"

17"
11"
8.5"
8.5"
11"
17"



30X

PRC
APERTURE
CARD

- REFERENCE DRAWINGS**
- E-43 COMMUNICATIONS SYSTEM LAYOUTS, SYMBOLS AND DETAILS
 - E-46 LIGHTING PANEL SCHEDULES
 - E-48 COMMUNICATIONS OVERHEADS, WIRING, ADDRESS AND EMERGENCY EVALUATION ALARM SYSTEMS
 - E-555 3M-1 COMMUNICATIONS OVERHEADS FOR THE REACTOR
 - E-555 3M-1 COMMUNICATIONS OVERHEADS FOR THE REACTOR

NOTES

1. MOUNTING HEIGHT OF FIXTURES LOCATED BETWEEN COLS. 2-6, 7-9 AND A-E AND ALSO BETWEEN COLS. 2-4, 8-9 AND A-C SHALL BE 7'-0" FOR WALL MOUNTED FLUORESCENT FIXTURES CEILING MOUNTED FOR FLUORESCENT FIXTURES FOR LIGHTING ON INTERMEDIATE STORIES TO 10'0" CAN BE HUNG TO 10'0" FROM CEILING. ALL OTHER DATA REFER TO APPLICABLE DRAWINGS.

REV.	DATE	DESCRIPTION	BY	CHKD.
1		ISSUED FOR CONSTRUCTION		
2		REVISED TO SHOW REVISIONS		
3		REVISED TO SHOW REVISIONS		
4		REVISED TO SHOW REVISIONS		
5		REVISED TO SHOW REVISIONS		

RECENTEL
AND ASSOCIATES
MIDLAND PLANT UNITS 1 & 2
CONSUMERS POWER COMPANY
LIGHTING AND COMMUNICATIONS
REACTOR AND AUXILIARY BLDG.
UNIT 1 & 2 ELEVATION 634' ±

JOB NO. 7220 SHEET NO. E-305 (SHEET 1) OF 10

RIDS

8302030553

