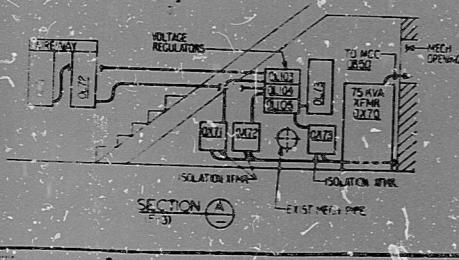
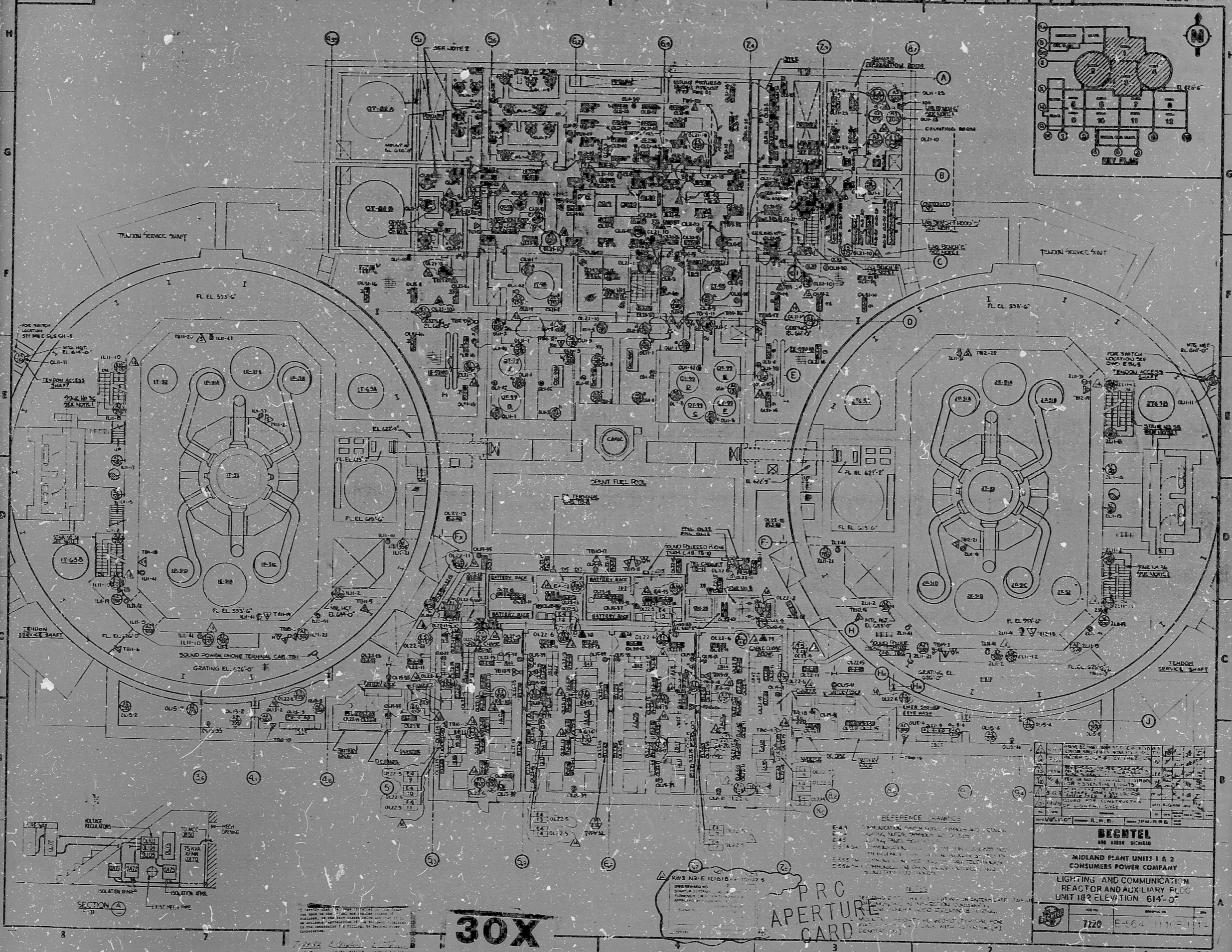


E-554 SH. 1 OF 1



NOTES:
 1. ALL WORK SHALL BE IN ACCORDANCE WITH THE LATEST EDITIONS OF THE NATIONAL ELECTRICAL CODE (NEC) AND THE NATIONAL FIRE ALARM AND SIGNAL CODE (NFPA 72).
 2. ALL WORK SHALL BE IN ACCORDANCE WITH THE LATEST EDITIONS OF THE NATIONAL ELECTRICAL CODE (NEC) AND THE NATIONAL FIRE ALARM AND SIGNAL CODE (NFPA 72).
 3. ALL WORK SHALL BE IN ACCORDANCE WITH THE LATEST EDITIONS OF THE NATIONAL ELECTRICAL CODE (NEC) AND THE NATIONAL FIRE ALARM AND SIGNAL CODE (NFPA 72).

30X

PRO APERTURE CARD

- REFERENCE DRAWINGS
- E-411 PRA REACTOR CORE UNIT - 1 & 2
 - E-412 PRA REACTOR CORE UNIT - 1 & 2
 - E-413 PRA REACTOR CORE UNIT - 1 & 2
 - E-414 PRA REACTOR CORE UNIT - 1 & 2
 - E-415 PRA REACTOR CORE UNIT - 1 & 2
 - E-416 PRA REACTOR CORE UNIT - 1 & 2
 - E-417 PRA REACTOR CORE UNIT - 1 & 2
 - E-418 PRA REACTOR CORE UNIT - 1 & 2
 - E-419 PRA REACTOR CORE UNIT - 1 & 2
 - E-420 PRA REACTOR CORE UNIT - 1 & 2

NO.	DESCRIPTION	DATE	BY	CHKD.
1	ISSUED FOR CONSTRUCTION	11/11/54	J.P.R.	J.P.R.
2	REVISION			
3	REVISION			
4	REVISION			
5	REVISION			
6	REVISION			
7	REVISION			
8	REVISION			
9	REVISION			
10	REVISION			

BECHTEL
 AND ASSOCIATES
 MIDLAND PLANT UNITS 1 & 2
 CONSUMERS POWER COMPANY
 LIGHTING AND COMMUNICATION
 REACTOR AND AUXILIARY FLOOR
 UNIT 182 ELEVATION 614'-0"

7120 E-554 SH. 1 OF 1

RIDS

8302030550

