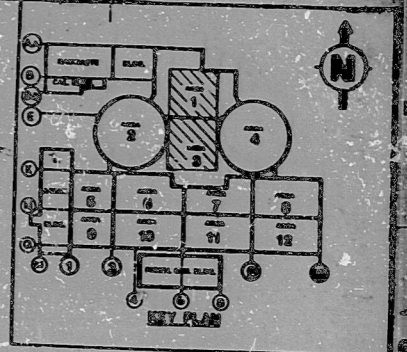
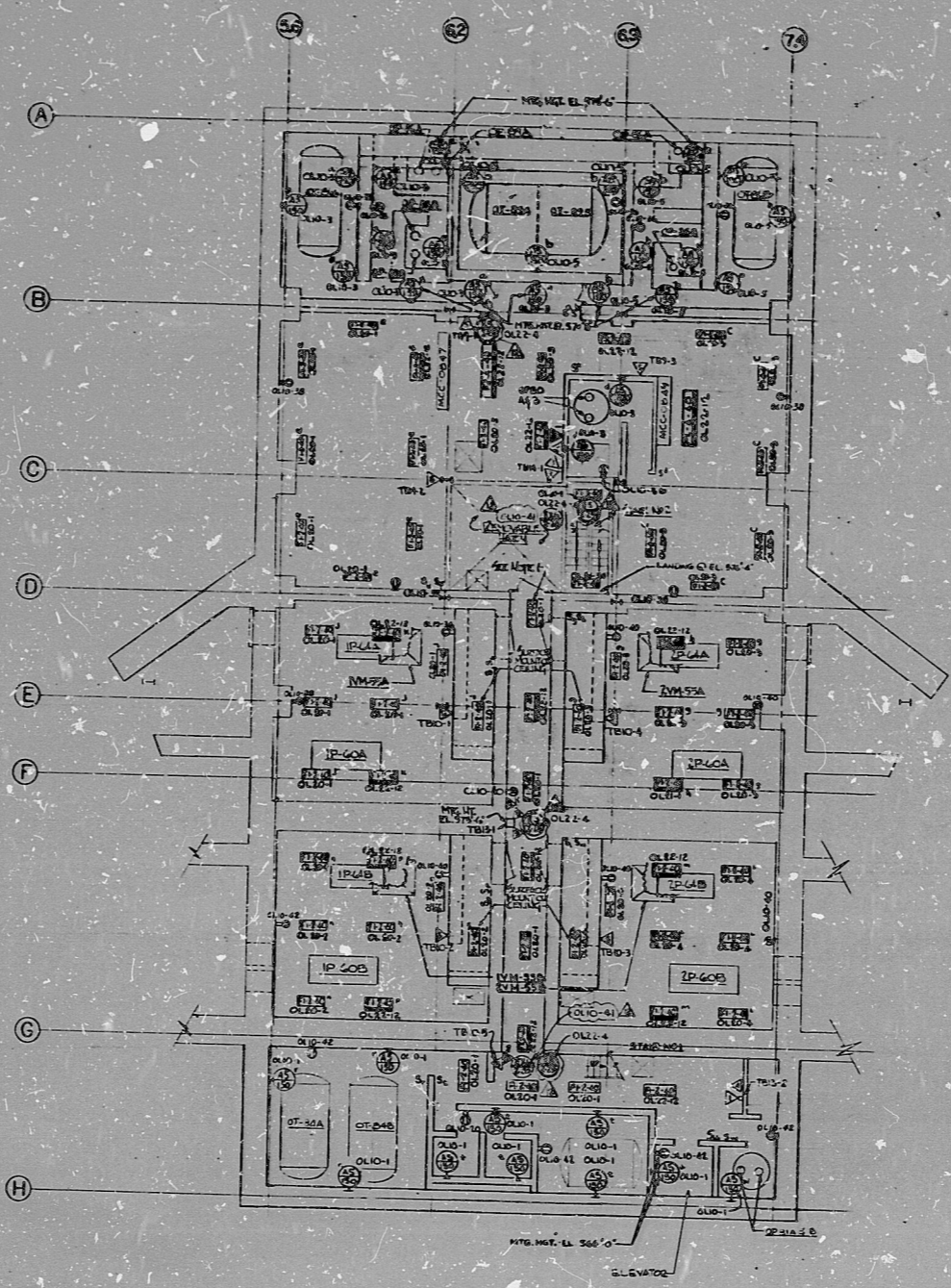


E-561SH10F1



NOTES
 1. CORRIDOR FIXTURES SHALL BE MOUNTED 8'-0" ABOVE FLOOR.

REFERENCE DRAWINGS
 E-65 COMMUNICATION SYSTEM NOTES, SYMBOLS & DETAILS.
 E-66 LIGHTING NOTES, SYMBOLS & DETAILS.
 E-68 LIGHTING PANEL, SCHEDULES.
 E-554, 54-1 COMMUNICATION EMERGENCY ALARM SYSTEMS AND EMERGENCY EVACUATION ALARM SYSTEMS.
 E-554, 54-1 COMMUNICATION EMERGENCY ALARM SYSTEMS.
 E-554, 54-1 COMMUNICATION EMERGENCY ALARM SYSTEMS.

30X

DATE: 11/15/55
 CONTRACTOR: M. J. BAKER, FOUR CORPORATION.

NO.	DESCRIPTION	DATE	BY	CHECKED
1	REV. DRAWING PER O&A	11/15/55		
2	ADD. LIGHTING SYMBOLS	11/15/55		
3	ADD. EMERGENCY SYMBOLS	11/15/55		
4	ADD. COMMUNICATION SYMBOLS	11/15/55		
5	ADD. COMMUNICATION SYMBOLS	11/15/55		
6	ADD. COMMUNICATION SYMBOLS	11/15/55		
7	ADD. COMMUNICATION SYMBOLS	11/15/55		
8	ADD. COMMUNICATION SYMBOLS	11/15/55		
9	ADD. COMMUNICATION SYMBOLS	11/15/55		
10	ADD. COMMUNICATION SYMBOLS	11/15/55		
11	ADD. COMMUNICATION SYMBOLS	11/15/55		
12	ADD. COMMUNICATION SYMBOLS	11/15/55		

PRO APERTURE CARD

REVISED NO. 12
 STARTUP & TESTING TO BE DONE BY CONTRACTOR ON AFTER THE WORK IS AFFECTED BY CHANGES.

SEE DRAWING SET FOR ALL SYMBOL DATA REFER TO APPLICABLE DRAWINGS

BECKETT AND BROS. MICHEAL

MIAMI PLANT UNITS 1 & 2 CONSUMERS POWER COMPANY

LIGHTING AND COMMUNICATION AUXILIARY BLDG.

UNIT 122 ELEVATION 568'-0"

NO. 7220 E-561SH10F1 12

THE CONTRACTOR SHALL BE RESPONSIBLE FOR THE PROTECTION OF ALL EXISTING UTILITIES AND STRUCTURES. THE CONTRACTOR SHALL BE RESPONSIBLE FOR THE PROTECTION OF ALL EXISTING UTILITIES AND STRUCTURES. THE CONTRACTOR SHALL BE RESPONSIBLE FOR THE PROTECTION OF ALL EXISTING UTILITIES AND STRUCTURES.

RIDS

8302030543

