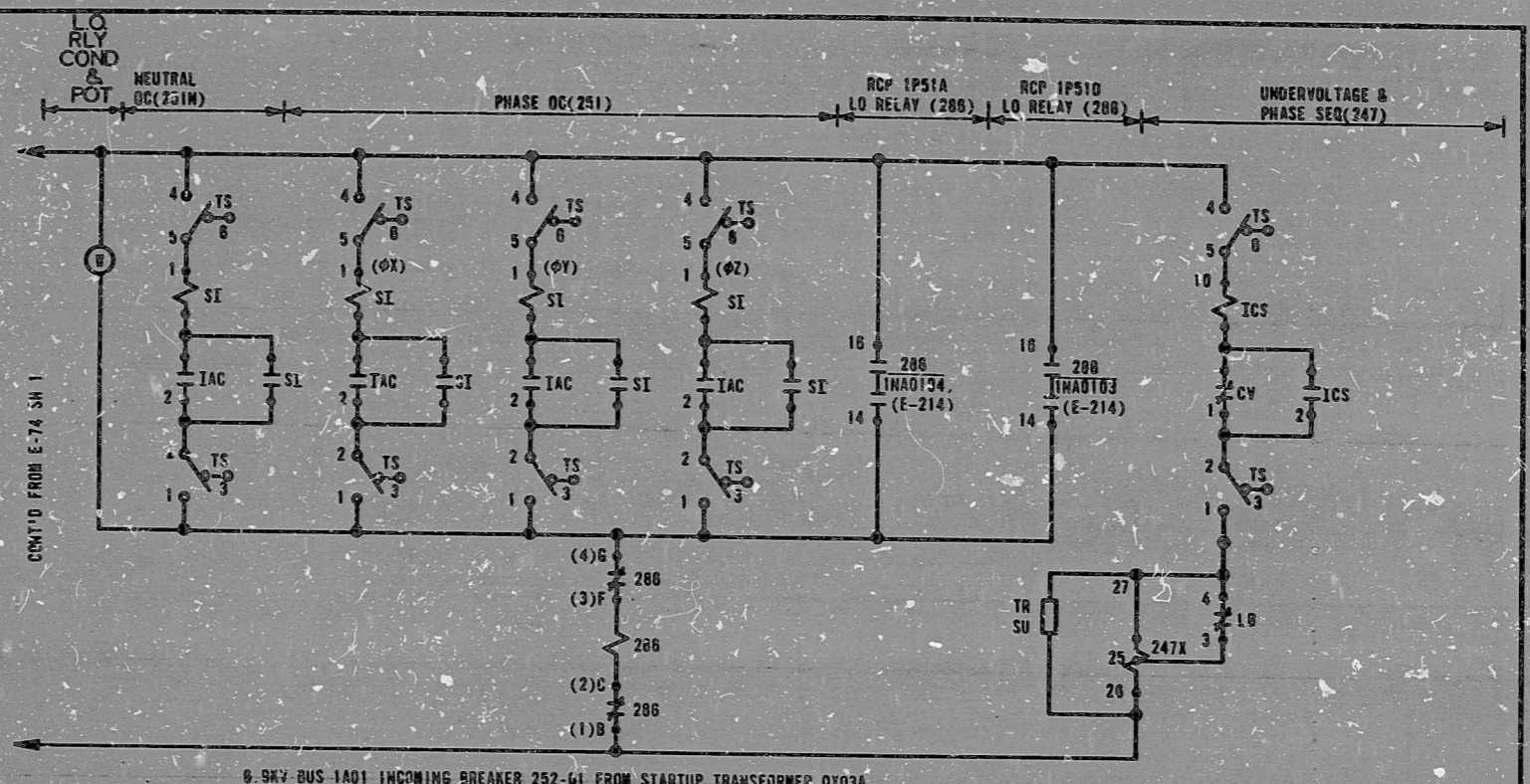


This drawing and the design it covers are the property of BECHTEL. They are hereby loaned and on the borrower's express agreement that they will not be reproduced, copied, loaned, exhibited, or used except in the manner and for the purposes permitted by any written agreement given by the lender to the borrower.

NO.	DATE	BY	REVISION
1	10-20-74	W.C.	REVISED PER 202/7402
2	12-6-75	W.C.	REVISED PER 202/7402
3	7-13-77	W.C.	ISSUED FOR CONSTRUCTION

**DEVICE TABLE**

202	TIME DELAY DROP OUT AGASII, I 7022PA
208	LOCKOUT RELAY (ELECTRO SD LOR)
247X	UNDV & PHASE SEQ AUX RELAY (ITE-J13)
FU	FUSE (CHASE - SHARNUT - A2K30)



0.9KV BUS 1A01 INCOMING BREAKER 252-G1 FROM STARTUP TRANSFORMER 0X03A

SCHEME 1NA0101  
SU DESIG 1-NAA

- NOTES:**
1. FOR BREAKER INTERNAL SCHEMATIC SEE DWG E-71.
  2. FOR RELAY TYPES SEE DWGS E-3, E-5 & E-8.
  3. FOR LOCKOUT RELAY CONTACTS DEVELOPMENT SEE SH 9 THIS DWG.
  4. FOR UNLV .. & PHASE SEQUENCE AUX RELAY CONTACTS DEVELOPMENT SEE SH 10 THIS DWG.
  5. EXTERNAL CABLE FOR SCHEMES 1NA0201 & 2NA0101.
  6. FOR SCHEMES 1NA0201 & 2NA0101 ONLY

BECHTEL ANN ARBOR, MICHIGAN		
MIDLAND PLANT UNITS 1 & 2 CONSUMERS POWER COMPANY		
SCHEMATIC DIAGRAM 0.9 & 0.4 10KV BUS INCOMING BREAKERS FROM STARTUP TRANSFORMERS		
JOB NO.	DRAWING NO.	REV.
7220	E-74 SH 2	4

"I certify that the image contained on this frame was made in the normal and regular course of business, on the date stated below and that it is an accurate reproduction of the document submitted to the contractor for filming, by Bechtel Power Corporation."

DATE: 10-27-73  
CAMERA OPERATOR: M. C. 1554  
CONTRACTOR'S SUPERVISOR OR MANAGER: M. C. 1554

**16X**

PRO  
APERTURE  
CARD

RIDS

830203 0497

