

17"

11"

8.5"

8.5"

11"

17"

17"

11"

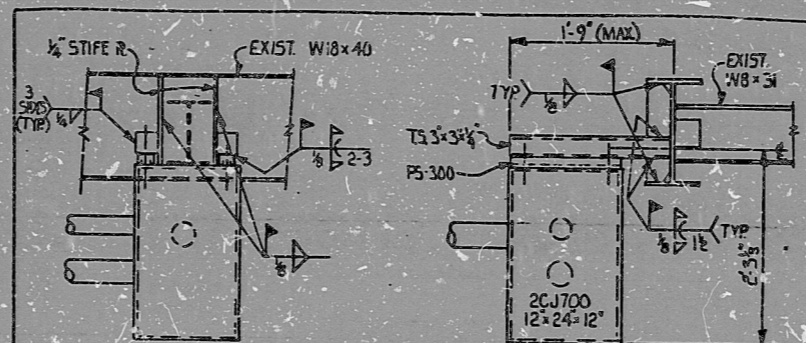
8.5"

8.5"

11"

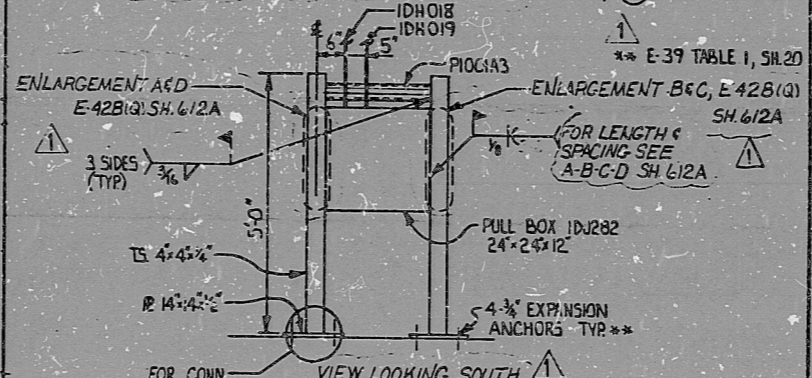
17"

THIS DRAWING AND THE DESIGN IT COVERS ARE THE PROPERTY OF BUSHNELL. THEY ARE LOANED TO YOU AND ON THE UNDERSTANDING THAT THEY WILL NOT BE REPRODUCED, COPIED, LOANED, EITHER WHOLLY OR IN PART, OR IN ANY MANNER WITHOUT THE WRITTEN PERMISSION OF BUSHNELL.



TYPE 612 BOX SUPPORT
TOTAL WT. 100*

SUPPORT LOCATION, AUX. BLDG., EL. 674'-6", 4' S (K) & 14' E (53)



TYPE 612A BOX SUPPORT
ALLOWABLE WT. 350*

| No. | DATE | REVISIONS | BY | CHK'D | GROUP LEAD | GROUP SUPV. | PROJ. ENGR. | CHIEF ENGR. |
|-----|--------|--|-----|-------|------------|-------------|-------------|-------------|
| 1 | 6-2-81 | INCORP. FCU-E-4914 & REVISED | SID | HT | | | | |
| 2 | 2-1-79 | ISSUED FOR CONST. INCORP. FOR E-1485J E-1513 | SES | Q.A. | | | | |

| | | | |
|--------|---|----------------|---------|
| ORIGIN | DESIGNED | DRAWN | JOB No. |
| | MIDLAND PLANT UNITS 1 AND 2 CONSUMERS POWER COMPANY CONDUIT AND TRAY NOTES, SYMBOLS, AND DETAILS | | 7220 |
| SCALE | | DRAWING No. | REV. |
| | | E-42(Q) Sh 612 | 1 |

PRC
APERTURE
CARD

I certify that the image contained on this frame was made in the normal and regular course of business, on the date stated below and that it is an accurate reproduction of the document submitted to reprographics.

8302020496

RIDS

