

17"

11"

8.5"

8.5"

11"

17"

17"

11"

8.5"

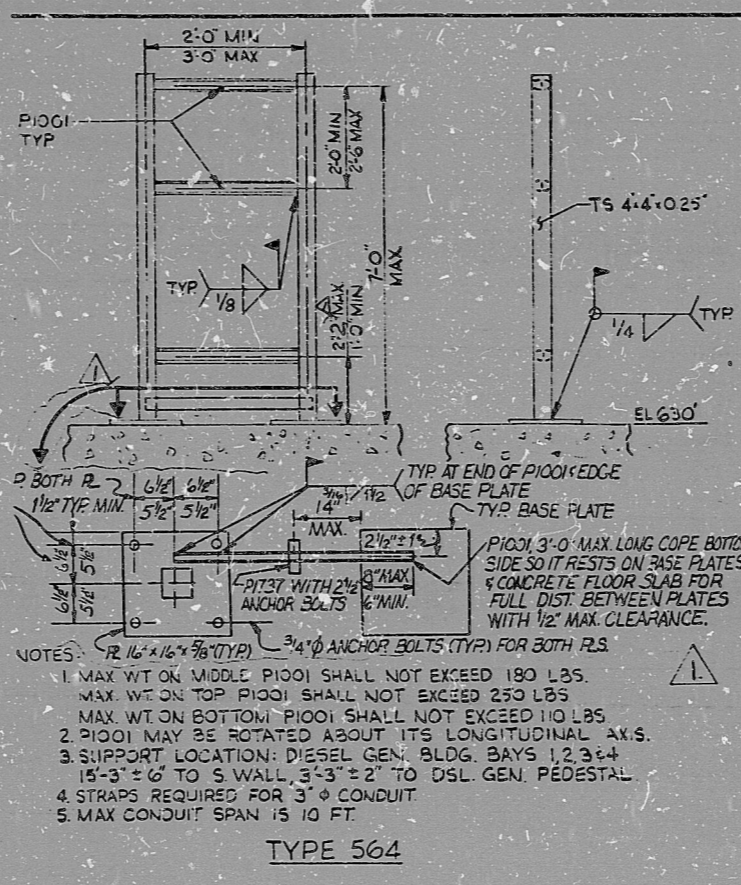
8.5"

11"

17"

10X

I certify that the image contained on this frame was made in the normal and regular course of business, on the date stated below and that it is an accurate reproduction of the document submitted to reprographics.



NO.	DATE	REVISIONS	BY	CHK'D	GROUP	GROUP	PROJ.	CHIEF
1	6-2-81	ISSUED FOR CONST. PER FOR E-240	VIM	SL	ELL	RUBIN	207A	
2								
3								

DESIGNED BY: M. MILLAR
 DRAWN BY: M. MILLAR
 JOB NO. 7220
 DRAWING NO. E-42(9) SRT. 504
 REV. 1

PRC APERTURE CARD

8302020492

RIDS

