

17"

11"

8.5"

8.5"

11"

17"

17"

11"

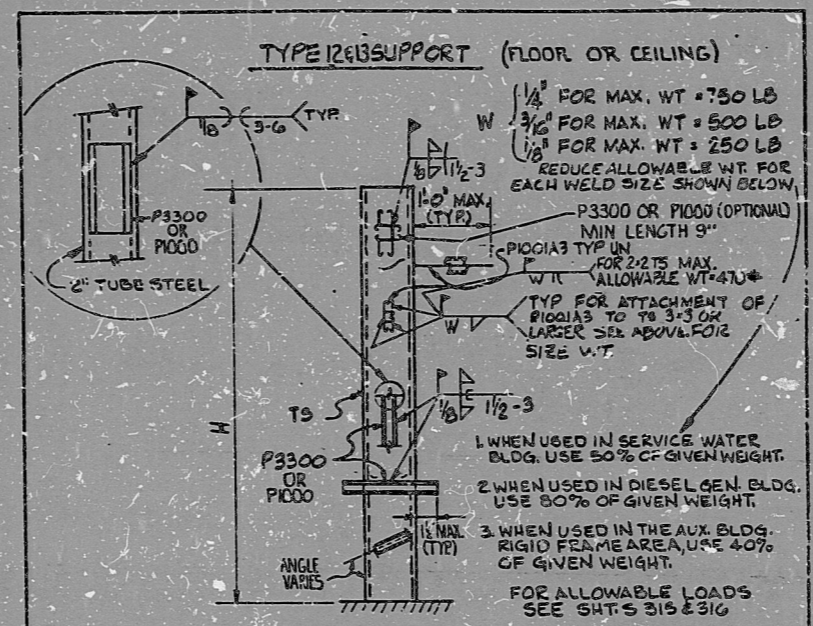
8.5"

8.5"

11"

17"

This drawing and the design it covers are the property of BECHTEL. They are merely loaned and on the borrower's express agreement that they will not be reproduced, copied, loaned, exhibited, or used except in the limited way and private use permitted by any written consent given by the lender to the borrower.



- NOTE:
1. P1001A3, P3300, AND P1000 MEMBERS MAY BE ATTACHED AT ANY LOCATION ON T.S.
  2. FOR ATTACHMENT OF CONDUIT TO P3300 MEMBER OR T.S. SEE SH. 329
  3. UNISTRUT CLAMP OR STRAP TO BE USED FOR ATTACHMENT OF CONDUIT TO SUPPORT.
  4. FOR T.S. CONNECTION TO ANCHOR BASE PL., SEE SHTS. 363 & 364.
  5. FOR T.S. CONNECTION TO EXISTING BEAM, SEE SH. 334.
  6. FOR ATTACHMENT OF PULL-BOX TO FLOOR SUPPORT, SEE SH. 605.
  7. STICH WELDS CALLED OUT ON THIS SHEET MAY USE 1/2 - 3, 3 - 6, AND 2 - 4 SPACING INTERCHANGEABLE.

No.	DATE	REVISIONS	BY	CHK'D	GROUP	GROUP	PROJ.	CHIEF
1	11-19-61	INCOMP FOR E-2459	SID	WT	WT	WT	WT	WT
2	6-2-62	INCOMP FOR E-307	SID	WT	WT	WT	WT	WT
3	12-17-70	REVISED FOR CONDUIT OVER	BC	q.g.a.	WT	WT	WT	WT

SCALE	DESIGNED	DRAWN	JOB No.
ORIGIN	MIDLAND PLANT UNITS 1 & 2	CONSUMERS POWER COMPANY	CONDUIT AND TRAY
NOTES, SYMBOLS AND DETAILS			E-420(2) SH. 332

PRC APERTURE CARD

I certify that the image contained on this frame was made in the normal and regular course of business, on the date stated below and that it is an accurate reproduction of the document submitted to reprographics.

8302020472

RIDS

