

17"

11"

8.5"

8.5"

11"

17"

17"

11"

8.5"

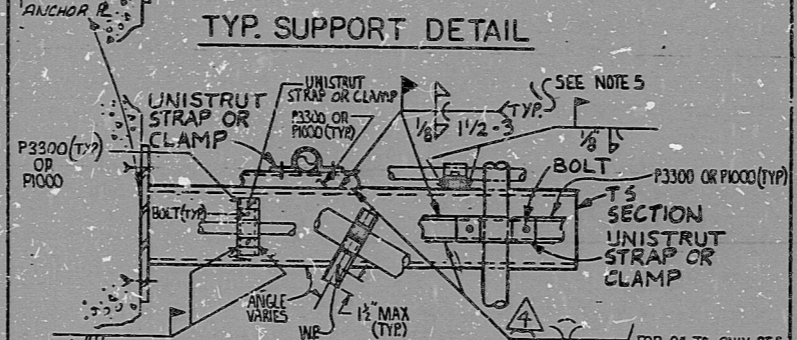
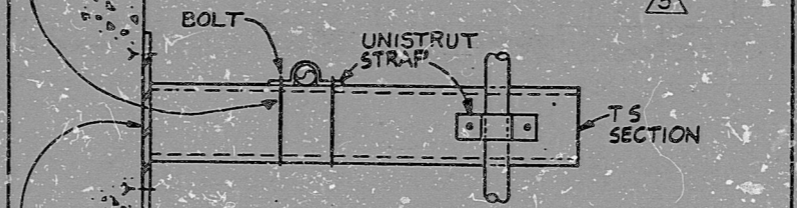
8.5"

11"

17"

This drawing and the design it covers are the property of BECHTEL. They are merely loaned and on the borrower's express agreement that they will not be reproduced, copied, loaned, exhibited, or used except in the limited way and for the use permitted by any written consent given by the lender to the borrower.

BOLT WITH NUT AND WASHER OR DRILL AND TAP. FIELD DRILL HOLES IN TUBE STEEL FOR A-307 BOLT. WHEN USING BOLT WITH NUT AND WASHER, DRILL HOLE 1/32" LARGER THAN BOLT SIZE. WHEN DRILLING AND TAPPING, USE A NO. 7 SIZE DRILL BIT AND A 1/4-20 TAP FOR 1/4" Ø BOLTS, AND A 5/16" DRILL BIT AND A 3/8-16 TAP FOR 3/8" Ø BOLTS. BOLT SIZE TO BE USED SHALL BE 1/32" SMALLER THAN STRAP HOLE SIZE. ON TAPPED HOLES BOLT NEED NOT EXTEND THROUGH TUBE STEEL.



- 1. FOR TS TO ANCHOR PLATE CONNECTION SEE SHEET 363 OR 369A
- 2. FOR SUPPORT SPACING SEE SHEET 312 OR TABLE 14, SH. 317A
- 3. FOR UNISTRUT STRAPS USE 1/4" Ø A307 BOLTS FOR CONDUITS 1/2" DIA. AND LESS USE 3/8" Ø A307 BOLTS FOR CONDUITS 2" DIA. AND ABOVE
- 4. P3300 OR P1000 SHIM MEMBERS MAY BE ATTACHED AT ANY LOCATION OR ORIENTATION ON TS.
- 5. AS AN ALTERNATE MAY USE 305 SPACING

19-31-79	INCOMP. DCN # 80 E-81	PPP	308	RLD				
6-2-81	INCORP. E-1-2677	S10	777	RLD	JAK/HW	2/2/81		
12-15-79	ISSUED FOR CONSTR. WAS SMT-193	EC	944	RLD	TR	2/2/81		
No.	DATE	REVISIONS	BY	CHK'D	GROUP LEAD	GROUP SUPV.	PRD. ENGR.	CHIEF ENGR.
SCALE		DESIGNED	DRAWN		JOB No. 7229			
ORIGIN		MIRIAM PEARL, SHEETS 1 & 2 CONSUMER PAPER COMPANY CONDUIT AND TRAY NOTES, SYMBOLS AND DETAILS			DRAWING No.		REV.	
					5-42B(6) SH. 329		5	

PRC APERTURE CARD

I certify that the image contained on this frame was made in the normal and regular course of business, on the date stated below and that it is an accurate reproduction of the document submitted to reprographics.

KIDS

8302020471

