

17"

11"

8.5"

8.5"

11"

17"

17"

11"

8.5"

8.5"

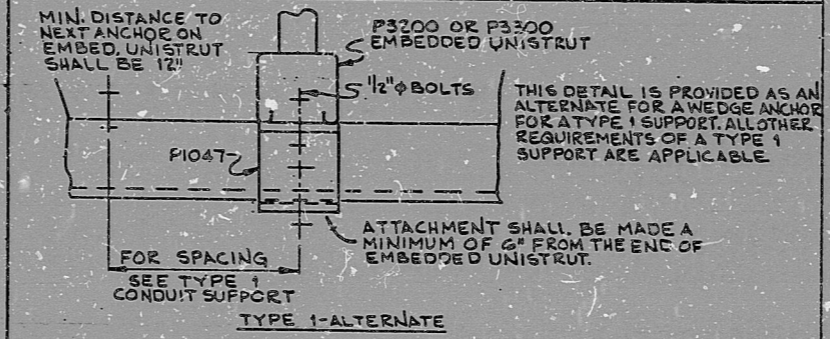
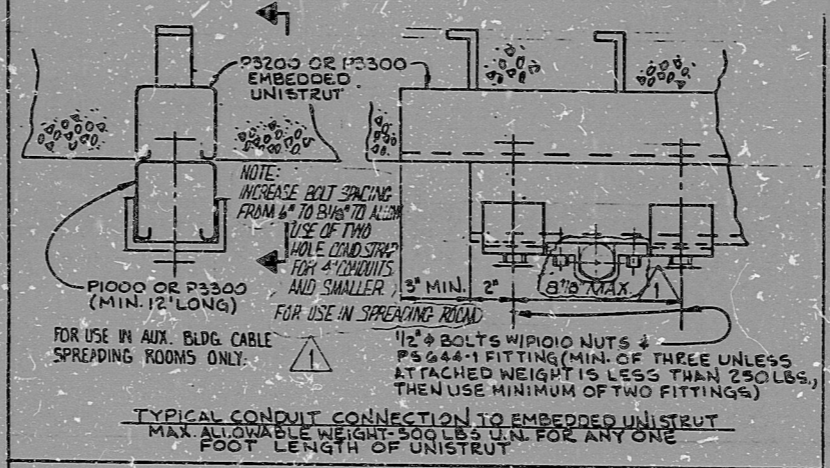
11"

17"

103

I certify that the image contained on this frame was made in the normal and regular course of business, on the date stated below and that it is an accurate reproduction of the document submitted to microphotographs.

ALL INFORMATION CONTAINED HEREIN IS UNCLASSIFIED EXCEPT WHERE SHOWN OTHERWISE. IT IS RELEASED UNDER EXECUTIVE ORDER 11652, WHICH AUTHORIZES RELEASE OF INFORMATION CONTAINED HEREIN UNLESS IT IS DETERMINED THAT DISCLOSURE OF THE INFORMATION WOULD BE DETERMINED TO BE IN THE INTERESTS OF NATIONAL DEFENSE.



|  |      |                                  |                  |        |            |             |             |             |
|--|------|----------------------------------|------------------|--------|------------|-------------|-------------|-------------|
| NO.  | DATE | REVISIONS                        | BY               | CHK'D  | GROUP LEAD | GROUP SUPV. | PROJ. ENGR. | CHIEF ENGR. |
| 1  | 2-82 | ISSUED FOR CONST. PER FOR E-1406 | BC               | g.a.g. | BLB        | BY          | WCH         |             |
| DESIGNED   |      |                                  | DRAWN            |        |            |             |             |             |
| NIDLAND PLANT UNITS 1 AND 2 CONSUMERS POWER COMPANY CONDUIT AND TRAY NOTES, SYMBOLS, AND DETAILS |      |                                  | JOB No. 7270     |        |            | DRAWING No. |             |             |
|  |      |                                  | E-42(Q) Sh 318 A |        |            | REV. 1      |             |             |

PRC APERTURE CARD

RIDS

8302020467

