

17"

11"

8.5"

8.5"

11"

17"

17"

11"

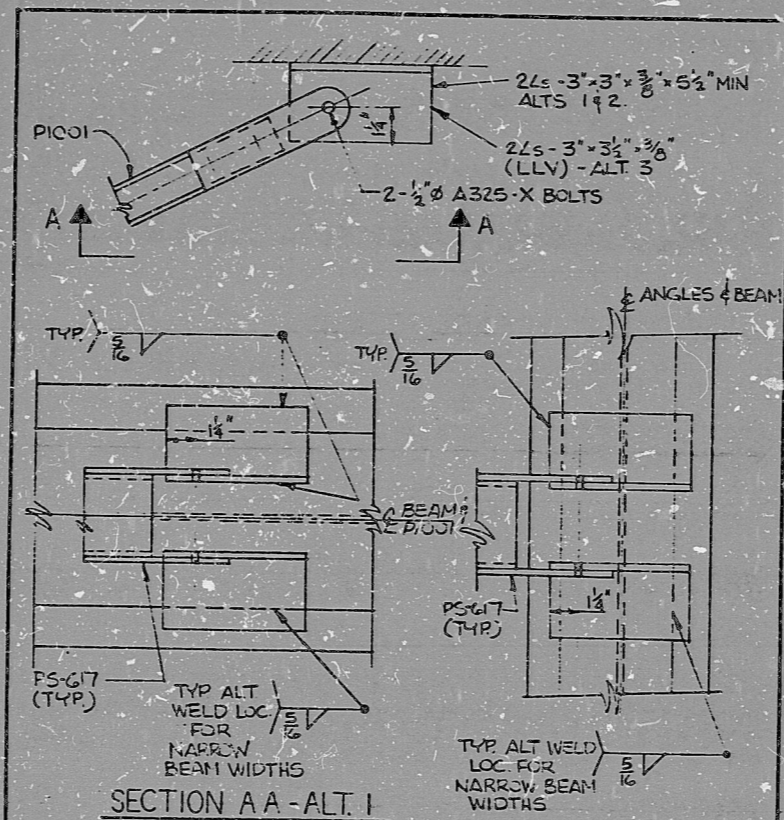
8.5"

8.5"

11"

17"

This drawing and the design it covers are the property of BECHTEL. They are hereby loaned and on the borrower's express agreement that they will not be reproduced, copied, loaned, exhibited or used except in the limited way and private use permitted by any written consent given by the lender to the borrower.



SECTION A A - ALT. 1
 DETAIL IF SECTION A A - ALT. 2
 Note: WELD SIZE FOR NARROW BEAM WIDTHS SHALL BE 5/16 OR MAX. SIZE PER AISC SPEC. 1.17.6 WHICHEVER IS SMALLER. (PS-617 FITTINGS MAY BE BOLTED INSIDE OR OUTSIDE OF WELDED ANGLES OR ONE INSIDE AND ONE OUTSIDE.)

7-5-78	ADDED NOTE	DESIGNED BY	CHKD BY	APP'D BY
6-2-82	ISSUED FOR CONSTRUCTION TO INCORP FOR ELEC	DESIGNED BY	CHKD BY	APP'D BY
1-24-77	ISSUED FOR CONSTRUCTION TO INCORP FOR ELEC	DESIGNED BY	CHKD BY	APP'D BY
NO.	DATE	REVISIONS	BY	CHKD
SCALE	DESIGNER	DRAWN	BY	APP'D
0731E	BECHTEL	MIDLAND PLANT UNITS 1 AND 2	CONSUMER'S POWER COMPANY	JOB No. 7220
4/19/77		CONDUIT AND TRAY	NOTES SYMBOLS AND DETAILS	DRAWING No. E4280 Sh 111
				REV. 3

PRO APERTURE CARD

I certify that the image contained on this frame was made in the normal and regular course of business, on the date stated below and that it is an accurate reproduction of the document submitted to reprographics.

8302020 449

RIDS

