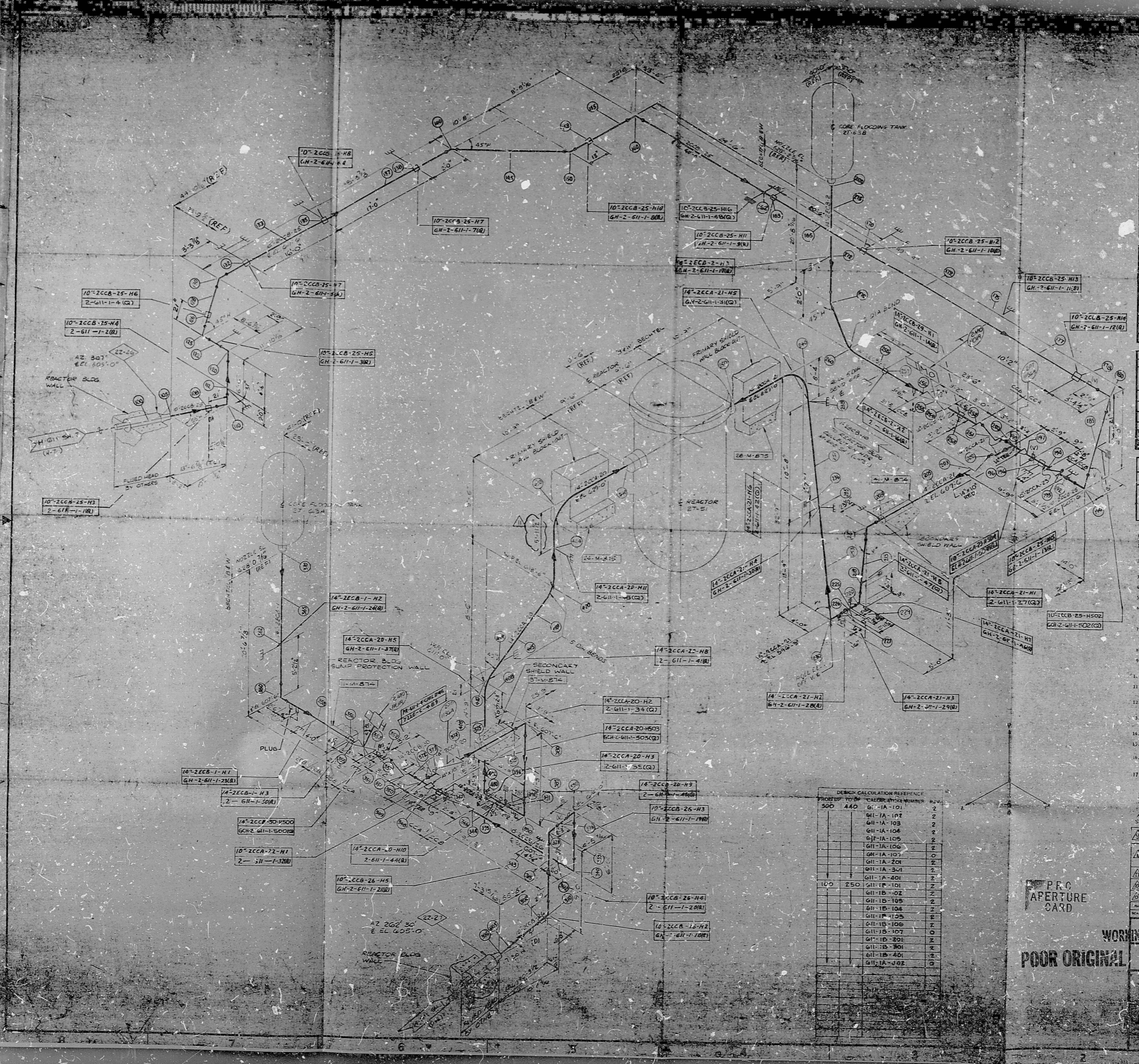


22"  
17"  
11"  
8.5"  
11"  
17"  
22"

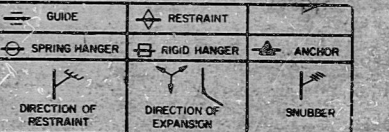


APPROX. LF=466

STRESS ANALYSIS DATA	
LINE NO.	
CLASS.	
TYPE	
THICKNESS	
MATERIAL	
DESIGN PRESSURE	
DESIGN TEMP.	
DESIGN WIND	
DESIGN SEISMIC	
DESIGN LOADS	
DESIGN NOTES	

STRESS ANALYSIS DATA	
LINE NO.	
CLASS.	
TYPE	
THICKNESS	
MATERIAL	
DESIGN PRESSURE	
DESIGN TEMP.	
DESIGN WIND	
DESIGN SEISMIC	
DESIGN LOADS	
DESIGN NOTES	

STRESS ANALYSIS DATA	
LINE NO.	
CLASS.	
TYPE	
THICKNESS	
MATERIAL	
DESIGN PRESSURE	
DESIGN TEMP.	
DESIGN WIND	
DESIGN SEISMIC	
DESIGN LOADS	
DESIGN NOTES	



1. ALL FITTINGS TO BE FABRICATED AND ERRECTED IN ACCORDANCE WITH SPECIFICATIONS 2220-40-004.
2. FOR MATERIAL DESCRIPTION OF PIPE, VALVES AND FITTINGS, SEE PIPING CLASSIFICATION NO. 3 AND 13 OF DWG M-487.
3. FOR PIPING AND INSTRUMENT SYMBOLS SEE DWG. M-411.
4. FOR EQUIPMENT LIST SEE M-485.
5. FOR INSTRUMENT CONNECTION DETAIL SEE DRAWING M-483.
6. NO ALLOWANCE HAS BEEN MADE FOR WELD JOINTS OR CORROSION AND ALL FITTINGS ARE DIMENSIONED TO THE UNDRILLED POSITION UNLESS OTHERWISE NOTED ON THE DRAWING.
7. FOR PIPING SYSTEM COMPARTMENT (MATERIAL) THIS AREA SEE M-74 AND M-75.
8. FOR INSTRUMENT TAGS SEE DWG. M-484.
9. FITTING MARKS UNLESS OTHERWISE NOTED HAVE A POSITION CENTERLINE RADII OF FITTING FROM THE WORKING CENTERLINE.
10. FOR PIPING AND INSTRUMENT SYMBOLS SEE DWG. M-400 THROUGH 200.
11. WELD JOINT SYMBOLS SPECIFICALLY NOTED ARE INDICATED (PS).
12. FOR VENTS AND DRAINS SEE DRAWING M-482. VENTS AND DRAINS ARE INDICATED (V) AND (D).
13. ALL TAGS TO FACE AND LINE TO END DIM. OF PERMISSIBLE VALUES FOR AREA SHALL BE INDICATED OTHERWISE NOTED.
14. INDICATES RECTOR BUILDING EXTERIOR WALL PENETRATION.
15. INDICATES RECTOR WALL PENETRATION.
16. INDICATES "MINOR" TO RECTOR BLDG. NORTH-SOUTH AND EAST-WEST AXIS.
17. HANGERS INDICATED ON THIS DRAWING ARE RECTOR BUILDING HANGERS. FOR HANGERS ON RECTOR BLDG. FOR G.C.H. FOR GILBERT COMMUNICATIONS.

DESIGN CALCULATION REFERENCE	
PROJECT NO.	TABLE NUMBER
500	440
	G1-1A-101
	G1-1A-102
	G1-1A-103
	G1-1A-104
	G1-1A-105
	G1-1A-106
	G1-1A-107
	G1-1A-108
	G1-1A-109
	G1-1A-110
	G1-1A-111
	G1-1A-112
	G1-1B-101
	G1-1B-102
	G1-1B-103
	G1-1B-104
	G1-1B-105
	G1-1B-106
	G1-1B-107
	G1-1B-108
	G1-1B-109
	G1-1B-110
	G1-1A-101
	G1-1A-102

P.P.C. APERTURE CARD

POOR ORIGINAL

**WORKING COPY**

**BECHTEL**  
ANN ARBOR, MICHIGAN

MIDLAND PLANT UNITS 1 & 2  
CONSUMER POWER COMPANY

DATE: 11/15/68  
BY: [Signature]

**RIDS**

8301180206

