

17"

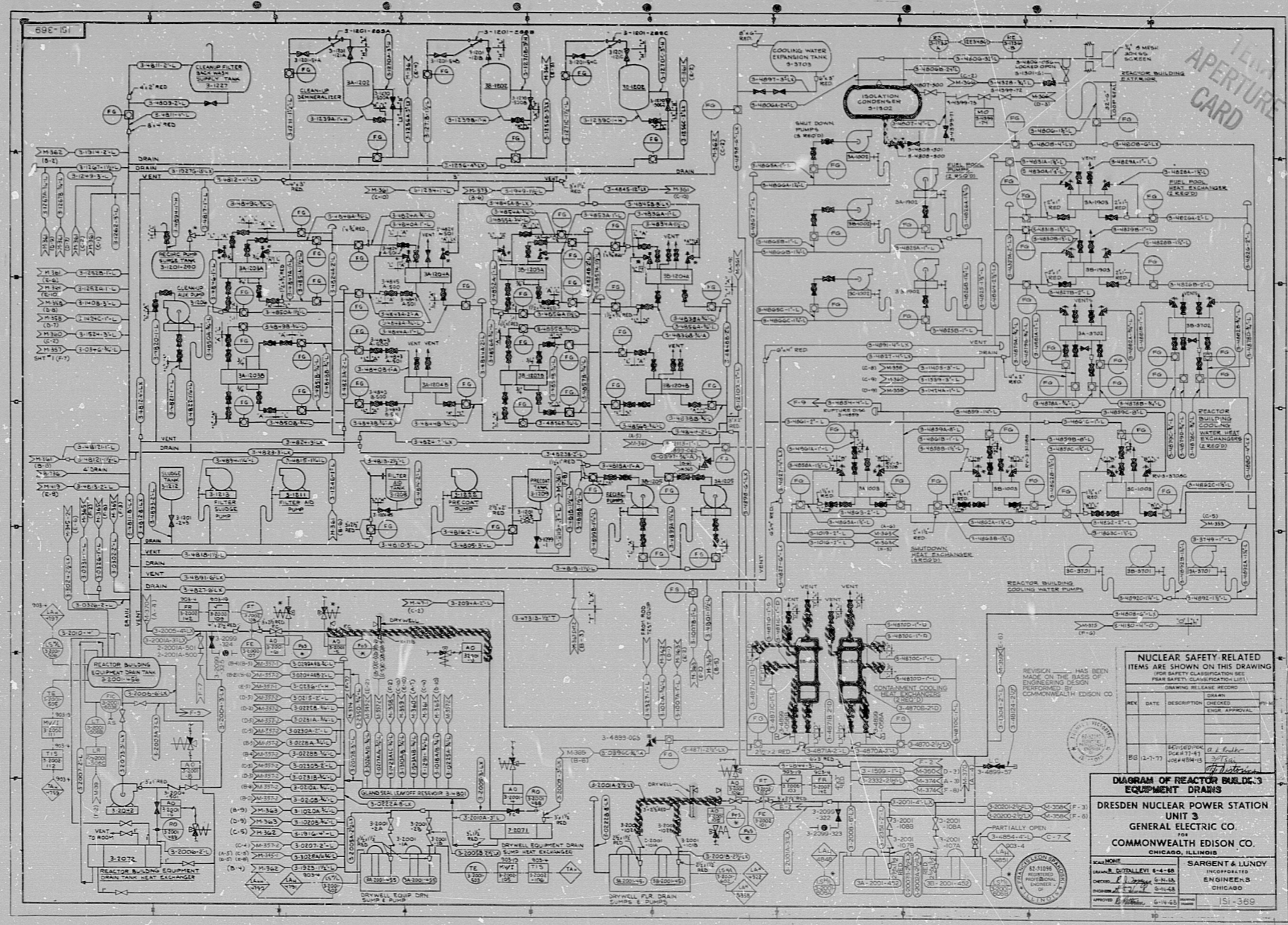
17"

11"

11"

8.5"

8.5"



REVISIONS HAVE BEEN MADE ON THE BASIS OF ENGINEERING DESIGN CHANGES. ALL CHANGES ARE SHOWN ON THIS DRAWING.

REV.	DATE	DESCRIPTION	BY	CHKD.	APPR'D.
1	1-17-71	ISSUED FOR CONSTRUCTION	J. J. LUNDY		
2	1-17-71	REVISIONS	J. J. LUNDY		

DIAGRAM OF REACTOR BUILDING EQUIPMENT DRAINS
DRESDEN NUCLEAR POWER STATION UNIT 3
GENERAL ELECTRIC CO.
COMMONWEALTH EDISON CO.
 CHICAGO, ILLINOIS

DESIGNED BY: J. J. LUNDY
 DRAWN BY: J. J. LUNDY
 CHECKED BY: J. J. LUNDY
 APPROVED BY: J. J. LUNDY

PROJECT: DRESDEN NUCLEAR POWER STATION UNIT 3
 DRAWING NO.: 3-1074
 SHEET NO.: 151-389

8.5"

8.5"

11"

11"

17"

17"

RTDS

8107130580

