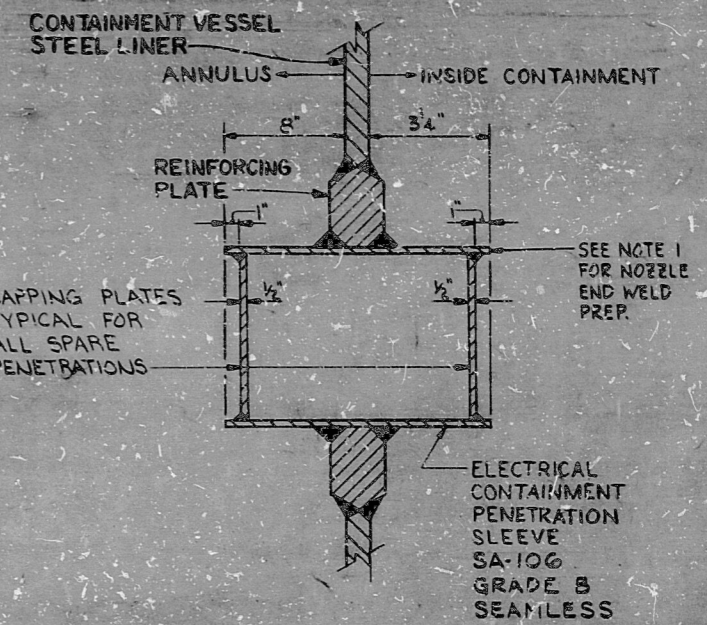


PENET. NO.	SLEEVE			LOCATION		DESIGNATION	DETAIL TYPE	B/M NO.	REMARKS
	O.D.	THICK.	LEN.	AZIM.	ELEV.				
E201	12.75"	.687	80	118° 7' 18"	632'-3"	INSTRUMENT, DIV 4, CLASS IE		2R725026	
E202	12.75"	.687	80	123° 51' 4"	632'-3"	INSTRUMENT, NON-CLASS IE		2R725027	
E203	12.75"	.687	80	118° 7' 18"	634'-0"	INSTRUMENT, DIV 1, CLASS IE		2R725028	
E204	12.75"	.687	80	123° 51' 4"	634'-0"	INSTRUMENT, DIV 1, CLASS IE		2R725030	
E205	12.75"	.687	80	118° 7' 18"	638'-9"	INSTRUMENT, DIV 1, CLASS IE		2R725019	
E206	12.75"	.687	80	123° 51' 4"	638'-9"	INSTRUMENT, NON-CLASS IE		2R725019	
E207	12.75"	.687	80	118° 7' 18"	640'-6"	INSTRUMENT, DIV 1, CLASS IE		2R725016	
E208	12.75"	.687	80	123° 51' 4"	640'-6"	INSTRUMENT, NON-CLASS IE		2R725016	
E209	12.75"	.687	80	118° 7' 18"	643'-3"	CONTROL, DIV 1, CLASS IE		2R725008	
E210	12.75"	.687	80	123° 51' 4"	645'-3"	LOW VOLTAGE POWER & CONTROL, NON-CLASS IE		2R725013	
E211	12.75"	.687	80	118° 7' 18"	647'-0"	CONTROL, DIV 1, CLASS IE		2R725007	
E212	12.75"	.687	80	123° 51' 4"	647'-0"	CONTROL, NON-CLASS IE		2R725012	
E213	12.75"	.687	80	118° 7' 18"	651'-9"	LOW VOLTAGE POWER, DIV 1, CLASS IE		2R725003	
E214	12.75"	.687	80	123° 51' 4"	651'-9"	LOW VOLTAGE POWER, NON-CLASS IE		2R725005	
E215	12.75"	.687	80	118° 7' 18"	653'-6"				SPARE
E216	12.75"	.687	80	123° 51' 4"	653'-6"	LOW VOLTAGE POWER, NON-CLASS IE		2R725029	
E217	18"	.937	80	118° 7' 18"	658'-3"	MEDIUM VOLTAGE, NON-CLASS IE		2R725001	
E218	18"	.937	60	123° 51' 4"	658'-3"	MEDIUM VOLTAGE, NON-CLASS IE		2R725002	
E221	12.75"	.687	80	132° 25' 14"	633'-1"	CONTROL, DIV. 2, CLASS IE		2R725011	
E222	12.75"	.687	80	136° 57' 23"	633'-1"	INSTRUMENT, NON-CLASS IE		2R725038	
E223	12.75"	.687	80	132° 25' 14"	639'-7"	INSTRUMENT, NON-CLASS IE		2R725024	
E224	12.75"	.687	80	136° 57' 23"	639'-7"	INSTRUMENT, NON-CLASS IE		2R725037	
E225	12.75"	.687	80	141° 29' 32"	639'-7"	INSTRUMENT, DIV. 2, CLASS IE		2R725020	
E226	12.75"	.687	80	132° 25' 14"	645'-3"	INSTRUMENT, NON-CLASS IE		2R725031	
E227	12.75"	.687	80	136° 57' 23"	645'-3"	INSTRUMENT, NON-CLASS IE		2R725036	
E228	12.75"	.687	80	141° 29' 32"	645'-3"	INSTRUMENT, DIV. 2, CLASS IE		2R725011	
E229	12.75"	.687	80	132° 25' 14"	647'-0"	INSTRUMENT, NON-CLASS IE		2R725012	
E230	12.75"	.687	80	136° 57' 23"	647'-0"	INSTRUMENT, DIV. 2, CLASS IE		2R725035	
E231	12.75"	.687	80	141° 29' 32"	647'-0"	INSTRUMENT, DIV. 2, CLASS IE		2R725023	
E232	12.75"	.687	80	132° 25' 14"	652'-7"	LOW VOLTAGE PWR. & CONT. NON-CLASS IE		2R725015	
E233	12.75"	.687	80	136° 57' 23"	652'-7"	INSTRUMENT, NON-CLASS IE		2R725034	
E234	12.75"	.687	80	141° 29' 32"	652'-7"	CONTROL, DIV. 2, CLASS IE		2R725010	
E235	12.75"	.687	80	132° 25' 14"	658'-3"	CONTROL, NON-CLASS IE		2R725014	
E236	12.75"	.687	80	136° 57' 23"	658'-3"	INSTRUMENT, NON-CLASS IE		2R725033	
E237	12.75"	.687	80	141° 29' 32"	658'-3"	CONTROL, DIV. 2, CLASS IE		2R725009	
E238	12.75"	.687	80	132° 25' 14"	660'-0"	LOW VOLTAGE POWER, NON-CLASS IE		2R725006	
E239	12.75"	.687	80	136° 57' 23"	660'-0"	INSTRUMENT, NON-CLASS IE		2R725032	
E240	12.75"	.687	80	141° 29' 32"	660'-0"	LOW VOLTAGE POWER, DIV. 2, CLASS IE		2R725004	
E241	12.75"	.687	80	141° 29' 32"	633'-1"	INSTRUMENT, DIV. 2, CLASS IE		2R725025	



ELECTRICAL CONTAINMENT VESSEL PENETRATION DETAIL

NOTES:

- NOZZLE END SHALL BE WELD PREPPED PER WESTINGHOUSE DRAWINGS 40048 (GAT # 4549-07-027) AND 40047 (GAT # 4549-07-026). NOZZLES ASSIGNED FOR SPARE PENETRATIONS SHALL NOT BE WELD PREPPED. CAPPING PLATES SHALL BE INSTALLED PER THE PENETRATION DETAIL (THIS DRAWING).
- USE BACKING RINGS FOR INSTALLATION.

REVISED NOTES, DETAIL & PENETS, E217 & E218. DELETED PENETS, E201, E202, E219 & E220. ADDED BM/NOs., REMARKS, DESIGNATIONS & SLEEVE THICKS & SCHED.

C	1/2	1/2	1/2	1/2	1/2	1/2	1/2	1/2	1/2
ADDED PENET. E241									
B	1/2	1/2	1/2	1/2	1/2	1/2	1/2	1/2	1/2
REV. PENET. DETAIL & SLEEVE O.D. ADDED NOTES									
A	1/2	1/2	1/2	1/2	1/2	1/2	1/2	1/2	1/2
NO. DATE MADE CHECK APPROVALS									

REVISED PENET. DETAIL

D	1/2	1/2	1/2	1/2	1/2	1/2	1/2	1/2	1/2
---	-----	-----	-----	-----	-----	-----	-----	-----	-----

NUCLEAR SAFETY RELATED

1/1/76	CONSTRUCTION	SP-33	TFF
	LIMITED CONSTRUCTION: AS NOTED		
	PRELIMINARY NOT FOR CONSTRUCTION		
8-27-74	BIDDING PURPOSES		
DATE	RELEASED FOR		ENGR

PRC APERTURE CARD

REVISED PENET. E204, E222, E224, E226, E227, E230, E233, E236, E239	M	1/2	1/2	1/2	1/2	1/2	1/2	1/2	1/2
REVISED NOTE 1 AS PER ECN 5934-33-1150	L	1/2	1/2	1/2	1/2	1/2	1/2	1/2	1/2
REVISED PENETRATION E216	K	1/2	1/2	1/2	1/2	1/2	1/2	1/2	1/2
INTERCHANGED PENET. E225 AND E231	J	1/2	1/2	1/2	1/2	1/2	1/2	1/2	1/2
REVISED NOZZLE DIMENSION INSIDE CONTAINMENT	I	1/2	1/2	1/2	1/2	1/2	1/2	1/2	1/2
REVISED PENETRATIONS E211, E213, E215, E216, E218, E219, E221, E213, E214, E215, E216, E218, E219, E221, E213, E214, E215, E216, E218, E219, E221	H	1/2	1/2	1/2	1/2	1/2	1/2	1/2	1/2
ADDED CAPPING PLATES TO CONTAINMENT PENETRATION	G	1/2	1/2	1/2	1/2	1/2	1/2	1/2	1/2
REVISED PENETRATION DETAIL & PENETRATIONS E201, E202, E203, E225, E226 & E237	F	1/2	1/2	1/2	1/2	1/2	1/2	1/2	1/2
REVISED AZIM OF PENET. E202 & E204	E	1/2	1/2	1/2	1/2	1/2	1/2	1/2	1/2

THE CLEVELAND ELECTRIC ILLUMINATING COMPANY			
PERRY NUCLEAR POWER PLANT UNIT 2			
ELECTRICAL			
CONTAINMENT VESSEL PENETRATION			
SCHEDULE			
READING	GILBERT ASSOCIATES, INC. ENGINEERS AND CONSULTANTS		
DATE	04	4549	8-27-74
SCALE	04	4549	8-27-74

CONTAINMENT VESSEL PENETRATION SCHEDULE UNIT 2

11
11
9'8
8.5"
11"
17"

Rids

82.12220547

