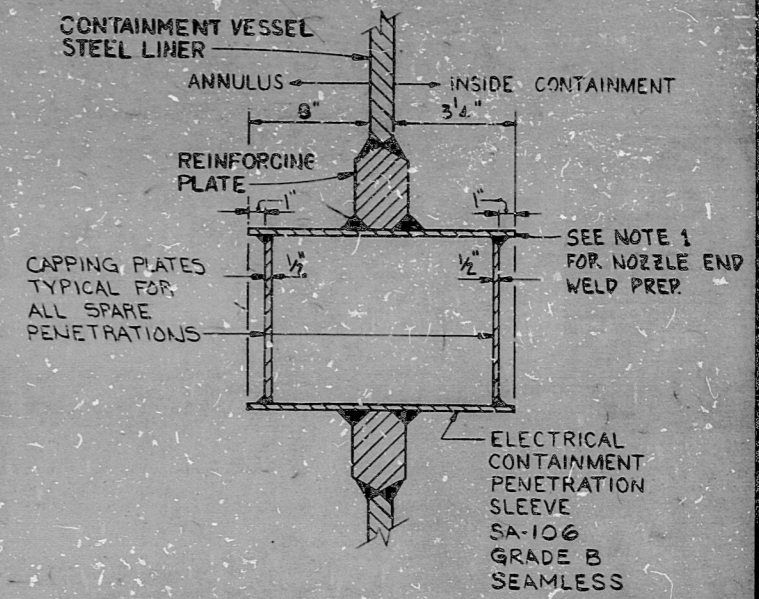


PENET. NO.	SLEEVE			LOCATION		DESIGNATION	DETAIL TYPE	B/M NO.	REMARKS
	OD	THK	SCD	ARIM	ELEV				
E301	12.75"	.687"	80	221°28'3"	630'-4"	INSTRUMENT, DIV 4, CLASS IE	-	IR72S026	
E302	12.75"	.687"	80	223°8'19"	630'-4"				SPARE
E303	12.75"	.687"	80	221°28'3"	641'-6"	INSTRUMENT, DIV 1, CLASS IE	-	IR72S017	
E304	12.75"	.687"	80	223°8'19"	641'-6"	INSTRUMENT, DIV 1, CLASS IE	-	IR72S028	
E305	12.75"	.687"	80	228°23'27"	641'-6"	INSTRUMENT, NON-CLASS IE	-	IR72S019	
E306	12.75"	.687"	80	221°28'3"	643'-3"	INSTRUMENT, DIV 1, CLASS IE	-	IR72S016	
E307	12.75"	.687"	80	223°8'19"	643'-3"	INSTRUMENT, DIV 1, CLASS IE	-	IR72S030	
E308	12.75"	.687"	80	228°23'27"	643'-3"	INSTRUMENT, NON-CLASS IE	-	IR72S018	
E309	12.75"	.687"	80	221°28'3"	649'-9"	CONTROL, DIV 1, CLASS IE	-	IR72S008	
E310	12.75"	.687"	80	223°8'19"	649'-9"	INSTRUMENT, NON-CLASS IE	-	IR72S031	
E311	12.75"	.687"	80	228°23'27"	649'-9"	CONTROL, NON-CLASS IE	-	IR72S013	
E312	12.75"	.687"	80	221°28'3"	651'-6"	CONTROL, DIV 1, CLASS IE	-	IR72S007	
E313	12.75"	.687"	80	223°8'19"	651'-6"	INSTRUMENT, NON-CLASS IE	-	IR72S032	
E314	12.75"	.687"	80	228°23'27"	651'-6"	CONTROL, NON-CLASS IE	-	IR72S012	
E315	12.75"	.687"	80	221°28'3"	656'-3"	LOW VOLTAGE POWER, DIV 1, CLASS IE	-	IR72S003	
E316	12.75"	.687"	80	223°8'19"	656'-3"	LOW VOLTAGE POWER, NON-CLASS IE	-	IR72S029	
E317	12.75"	.687"	80	228°23'27"	656'-3"	LOW VOLTAGE POWER, NON-CLASS IE	-	IR72S005	
E318	12"	.937"	80	221°28'3"	659'-0"	MEDIUM VOLTAGE POWER, NON-CLASS IE	-	IR72S001	
E320	12"	.937"	80	228°23'27"	659'-0"	MEDIUM VOLTAGE POWER, NON-CLASS IE	-	IR72S002	
E321	12.75"	.687"	80	235°54'44"	641'-6"	INSTRUMENT, NON-CLASS IE	-	IR72S034	
E322	12.75"	.687"	80	241°9'52"	641'-6"	INSTRUMENT, DIV 2, CLASS IE	-	IR72S021	
E323	12.75"	.687"	80	242°50'8"	641'-6"	INSTRUMENT, DIV 2, CLASS IE	-	IR72S035	
E324	12.75"	.687"	80	248°5'16"	641'-6"	INSTRUMENT, DIV 2, CLASS IE	-	IR72S023	
E325	12.75"	.687"	80	235°54'44"	643'-3"	INSTRUMENT, NON-CLASS IE	-	IR72S024	
E326	12.75"	.687"	80	241°9'52"	643'-3"	INSTRUMENT, NON-CLASS IE	-	IR72S037	
E327	12.75"	.687"	80	242°50'8"	643'-3"	INSTRUMENT, NON-CLASS IE	-	IR72S022	
E328	12.75"	.687"	80	248°5'16"	643'-3"	INSTRUMENT, DIV 2, CLASS IE	-	IR72S020	
E329	12.75"	.687"	80	235°54'44"	649'-9"	INSTRUMENT, NON-CLASS IE	-	IR72S033	
E330	12.75"	.687"	80	241°9'52"	649'-9"	INSTRUMENT, NON-CLASS IE	-	IR72S036	
E331	12.75"	.687"	80	242°50'8"	649'-9"	CONTROL, NON-CLASS IE	-	IR72S015	
E332	12.75"	.687"	80	248°5'16"	649'-9"	CONTROL, DIV 2, CLASS IE	-	IR72S010	
E333	12.75"	.687"	80	235°54'44"	651'-6"	INSTRUMENT, DIV 3, CLASS IE	-	IR72S025	
E334	12.75"	.687"	80	241°9'52"	651'-6"	INSTRUMENT, NON-CLASS IE	-	IR72S038	
E335	12.75"	.687"	80	242°50'8"	651'-6"	CONTROL, NON-CLASS IE	-	IR72S014	
E336	12.75"	.687"	80	248°5'16"	651'-6"	CONTROL, DIV 2, CLASS IE	-	IR72S009	
E337	12.75"	.687"	80	235°54'44"	657'-1 1/2"	CONTROL, DIV 3, CLASS IE	-	IR72S011	
E338	12.75"	.687"	80	241°9'52"	657'-1 1/2"				SPARE
E339	12.75"	.687"	80	242°50'8"	657'-1 1/2"	LOW VOLTAGE POWER, NON-CLASS IE	-	IR72S006	
E340	12.75"	.687"	80	248°5'16"	657'-1 1/2"	LOW VOLTAGE POWER, DIV 2, CLASS IE	-	IR72S004	
E341	12.75"	.687"	80	228°23'27"	638'-4"	INSTRUMENT, NON-CLASS IE	-	IR72S027	



ELECTRICAL CONTAINMENT VESSEL PENETRATION DETAIL

REVISED PENETRATIONS	REVISED PENETRATION DIMENSION INSIDE CONTAINMENT
E311, E321, E324, E325, E328, E329, E331, E332, E333, E336, E337, E340 & E341. RELOCATED NOTES	D 11 13 75 TL BS RGF
ADDED CAPPING PLATES TO CONTAINMENT PENET.	C 11 13 75 TL BS RGF
REVISED PENETRATION DETAIL & PENETRATIONS E334, E331, E332, E323, E324 & E341.	B 11 13 75 TL BS RGF
	A 11 13 75 TL BS RGF

NUCLEAR SAFETY RELATED

NO.	DATE	ISSUED	BY	FOR
1-9-76				CONSTRUCTION SP-33
				LIMITED CONSTRUCTION - AS NOTED
7-12-74				PRELIMINARY NOT FOR CONSTRUCTION
9-27-74				BIDDING PURPOSES

DATE RELEASED FOR: ENGR

THE CLEVELAND ELECTRIC ILLUMINATING COMPANY

PERRY NUCLEAR POWER PLANT UNIT 1

ELECTRICAL

CONTAINMENT VESSEL PENETRATION

SCHEDULE

READING PA. GILBERT ASSOCIATES, INC. ENGINEERS AND CONSULTANTS

DRAFTING		ENGINEER APPROVALS			
MADE	CHECKED	CIVIL	STRUCTURAL	ELECTRICAL	MATERIALS
TL	BS	N/A	N/A	N/A	N/A
DATE	DATE	DATE	DATE	DATE	DATE
1-23-76	1-23-76				
MECHANICAL		ENVIRONMENTAL		NUCLEAR	
DATE		DATE		DATE	

SCALE: 04 4549 8-224-31 L

DRAWING NUMBER

NOTES:  
 1. NOZZLE END SHALL BE WELD PREPPED PER WESTINGHOUSE DRAWINGS 40048 (GAI 4549-07-027) AND 40047 (GAI 4549-07-026). NOZZLES ASSIGNED FOR SPARE PENETRATIONS SHALL NOT BE WELD PREPPED. CAPPING PLATES SHALL BE INSTALLED PER THE PENETRATION DETAIL (THIS DRAWING).  
 2. USE BACKING RINGS FOR INSTALLATION.

REFERENCES:  
 0-312-610 THRU 615 CONTAINMENT PENETRATION LOCATIONS

PRC APERTURE CARD

REVISED PENET.	REVISED NOTE #1 AS PER ECN 5934-33-1150	REVISED PENETRATION #E316	REVISED NOZZLE DIMENSION INSIDE CONTAINMENT
E301, E303, E304, E305, E306, E307, E308, E309, E310, E311, E312, E313, E314, E315, E316, E317, E318, E319, E320, E321, E322, E323, E324, E325, E326, E327, E328, E329, E330, E331, E332, E333, E334, E335, E336, E337, E338, E339, E340, E341	11/16" BS RGF	11/16" BS RGF	11/16" BS RGF

CONTAINMENT VESSEL PENETRATION

11

11

9.8

8.5"

11"

17"

Rids

8212220521

