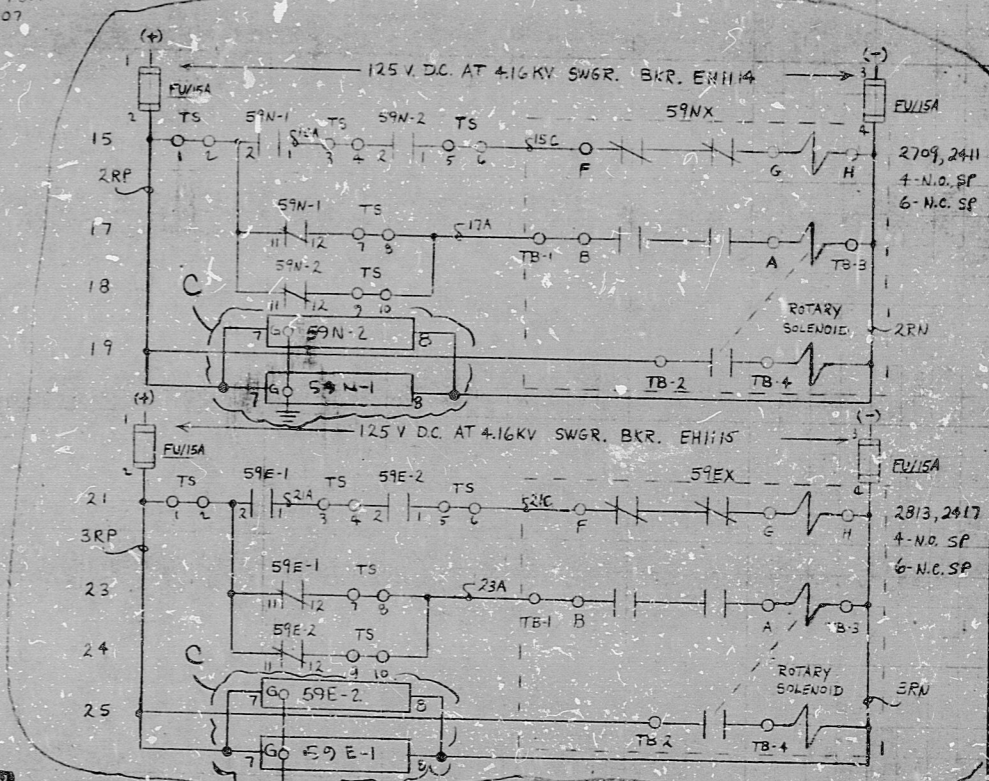
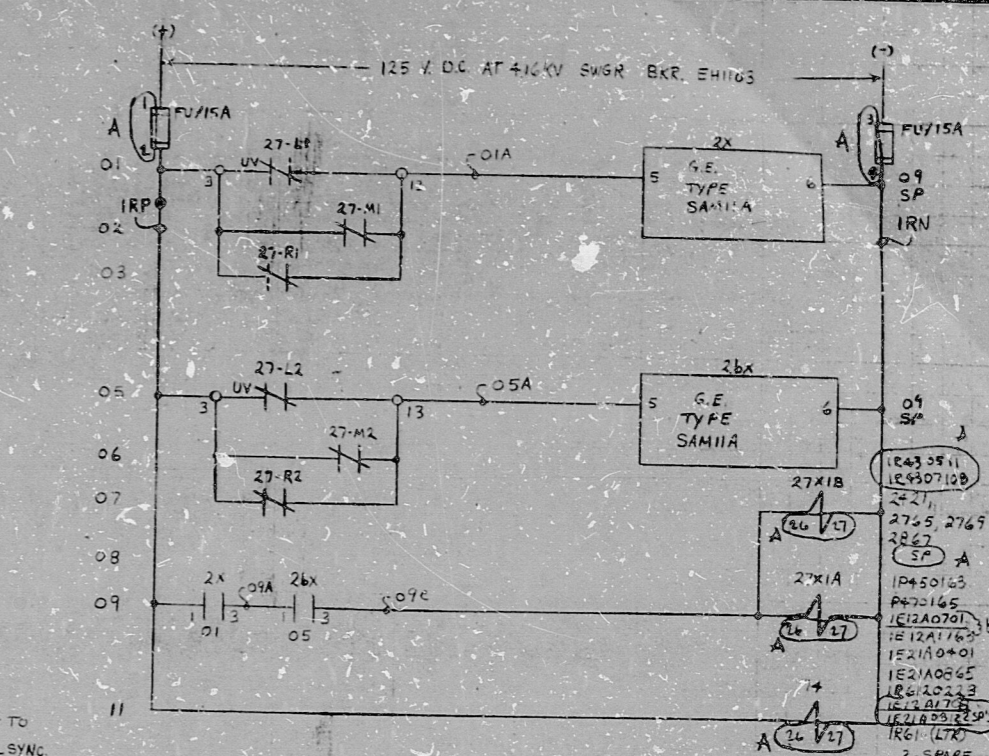


- NOTES:-
1. ALL DEVICES WITHOUT LOCATION MARKS ARE LOCATED ON SWGR.
 2. ALPHABETICAL WIRE MARKS ARE PREFIXED BY: SYSTEM NO., SHEET NO. & LINE NO. (EXAMPLE: R224601A)
 3. POTENTIAL WIRE MARKS ARE PREFIXED BY: SYSTEM NO., SHEET NO. (EXAMPLE: R224610A)
 4. DEVICE DESIGNATIONS ARE PREFIXED BY UNIT AND SYSTEM NO. (EXAMPLE: IR22-27)
 5. 27 - UV CONTACT CLOSE WHEN BUS VOLTAGE IS BELOW NORMAL. RELAY, G.E. TYPE NGV11A
 - 59 - UV CONTACT CLOSURE WHEN BUS VOLTAGE IS NORMAL OR ABOVE. RELAY, I.T.E. TYPE 211L175
 6. 59X - LATCH TYPE RELAY - CONTACTS SHOWN IN RESET (TRIPPED) POSITION (ELECTRO SWITCH - TRIPPED)
- LEGEND:-
- EXTERNAL WIRE MARK
 - INTERNAL WIRE MARK
 - T.D. - TEST DEVICE G.E. PK-2 6PNE
 - V.S. - VOLTMETER SWITCH
 - V - VOLTMETER
 - OP - OPERATE
 - RE - RESET
 - OV - OVERVOLTAGE
 - UV - UNDERVOLTAGE
7. 4 TEST SWITCHES ON I.T.E. UV RELAY COIL.
8. FOR I.T.E. RELAY STANDARDS REFER TO DWG. B-208-005.
- PREFERENCES:-
- D-208-017 ONE LINE DIAGRAM
 - B-211-206 SHEET 42, BLOCK DIAGRAM
 - B-208-152 SYNCHRONIZING DWG.
- REFERENCES:
- 74 - I.T.E. U13PA412
 - R020A - VOLTMETER 0-5KV
 - CLASS 1E DIVISION 1
 - 27X1A, 27X1B - I.T.E. U13PA701P
 - SWGR TERMINAL
 - BASELER PNL UH51-055A



PRC APERTURE CARD

NUCLEAR SAFETY RELATED

THE CLEVELAND ELECTRIC ILLUMINATING CO.

PERRY NUCLEAR POWER PLANT UNIT 1

ELECTRICAL-ELEMENTARY DIAGRAM

METAL-CLAD SWITCHGEAR (15KV AND 5KV)

3.12KV BUS EHII UNDER VOLTAGE AND

POTENTIAL CIRCUITS

11-30-77	CONSTRUCTION	
	PRELIMINARY	
DATE	RELEASED FOR	ENGR.

GILBERT ASSOCIATES, INC.
ENGINEERS AND CONSULTANTS

044549-000	TEL	DPB	DEG	11-30-77
WORK ORDER	MADE	CHKD.	DR. APP.	ENG. APP.

04	4549	B-208-206	R22	46	D
DRAWING NUMBER		SYSTEM		SHEET NO. REV.	

REV	MADE	CHKD	APPROVALS	DATE	REV	MADE	CHKD	APPROVALS	DATE	REV	MADE	CHKD	APPROVALS	DATE	REV	MADE	CHKD	APPROVALS	DATE	

E L E M D I A G R A M R 2 2 E H I I U N D E R - V O L T A G E

Rids

821221.0527

