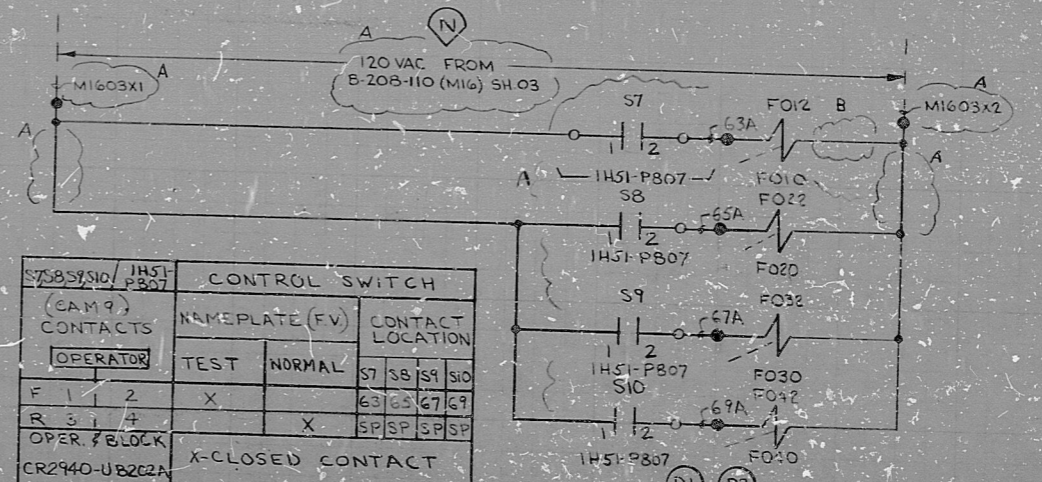
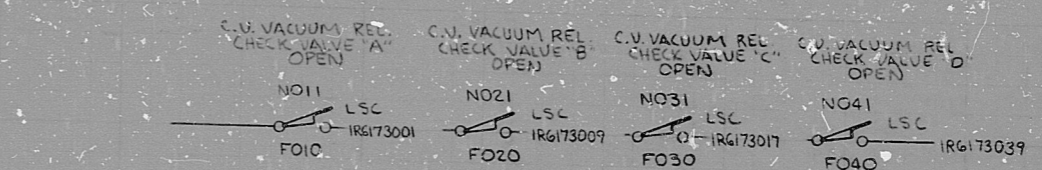


LEGEND:
 (D1) CLASS 1 DIV. 1
 (D2) CLASS 1 DIV. 2
 (N) NON NUCLEAR SAFETY RELATED

REFERENCE:
 GAT SYS DIAG D-914-LOW BLOCK 8-2111 SHS, 6

LEGEND (continued):
 (X) EXTERNAL WIRE MARK (SEE NOTES 1 & 2)
 (I) INTERNAL WIRE MARK (SEE NOTE 1)
 IH13-P801 - ECDS BENCHBOARD
 IH13-P800 - HVAC PANEL
 IH13-P147 - TERMINATION CABINET, T-MOD 44
 LSO - LIMIT SWITCH OPEN WHEN VALVE OPEN
 LSC - LIMIT SWITCH OPEN WHEN VALVE CLOSED
 FO12, FO22, FO32, FO42 - ENERGIZE TO OPEN VALVE
 IH13-P146 - TERMINATION CABINET, T-MOD 40
 (O) CONTAINMENT PENETRATION

NOTES:
 1. ALPHABETICAL WIRE MARKS ARE PREFIXED BY SYSTEM NO., SHEET AND LINE NO. (EX. W170565A).
 2. POTENTIAL WIRE MARKS ARE PREFIXED BY SYSTEM NO. AND SHEET NO. (EX. W1705X1).
 3. DEVICE DESIGNATIONS ARE PREFIXED BY UNIT AND SYSTEM NO. (EX. IM17-RC11).
 4. FOR GRAPHIC STANDARDS REFER TO DMC B-208-001.



CONTROL SWITCH		
(CAM?) CONTACTS	NAMEPLATE (FV)	CONTACT LOCATION
OPERATOR	TEST	57 58 59 S10
F 1 2	X	63 65 67 69
R 3 4	X	SP SP SP SP
OPER. BLOCK	X-CLOSED CONTACT	
CR2440-JB262A	MAINTAINED CONTACTS	

NUCLEAR SAFETY RELATED

THE CLEVELAND ELECTRIC ILLUMINATING CO.

PERRY NUCLEAR POWER PLANT UNIT 1

ELECTRICAL-ELEMENTARY DIAGRAM

CONTAINMENT VACUUM RELIEF SYS.

CHECK VALVES-FO10,FO20,FO30,FO40

REV	MADE	CHKD	APPROVALS	DATE	REV	MADE	CHKD	APPROVALS	DATE	REV	MADE	CHKD	APPROVALS	DATE	REV	MADE	CHKD	APPROVALS	DATE	REV	MADE	CHKD	APPROVALS	DATE	

DELETED TERM. PT. (LINE 64)

ADDED: FITS INFO. & REF. TO B-208-110 SH. 03. CHANGED WIRE MARKS 05X1 TO M1603X1 & 05X2 TO M1603X2. DELETED PENETRATIONS ON M1603X1 & M1603X2.

READING PA. 0445-9-000 JGS RPP DEG TFF 6/30/77

GILBERT ASSOCIATES, INC. ENGINEERS AND CONSULTANTS

6/30/77 CONSTRUCTION TFF
 PRELIMINARY
 DATE RELEASED FOR ENGR.

04 4549 B-208-111 MIT 05 B
 DRAWING NUMBER SYSTEM SH. NO. REV.

ELEM. DIAG. IN 40-FO10, FO20, FO30, FO40

RIDS

8212160776

