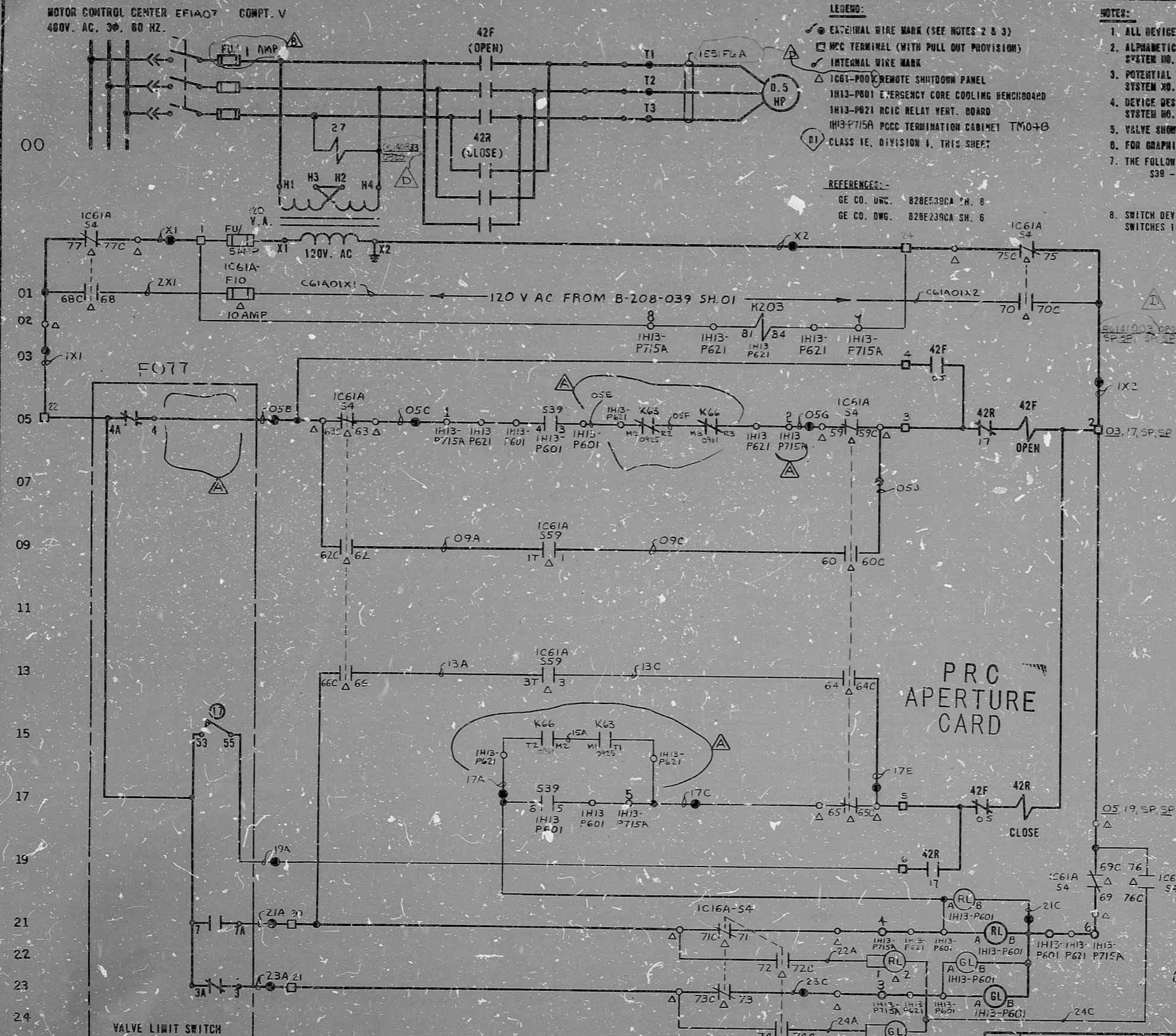


MOTOR CONTROL CENTER EF1A07 COMPT. V
480V. AC. 3Ø. 60 HZ.



- LEGEND:**
- EXTERNAL WIRE MARK (SEE NOTES 2 & 3)
 - MCC TERMINAL (WITH PULL OUT PROVISION)
 - △ INTERNAL WIRE MARK
 - △ IC61-P00 REMOTE SHUTDOWN PANEL
 - △ IH13-P01 EMERGENCY CORE COOLING BENCHBOARD
 - △ IH13-P02 RCIC RELAY VERT. BOARD
 - △ IH13-P75A PCC TERMINATION CABINET TMO+3
 - CLASS 1E, DIVISION 1, THIS SHEET

- REFERENCES:**
- GE CO. DWG. 828E389A CH. 8
 - GE CO. DWG. 828E239CA SH. 6

- NOTES:**
1. ALL DEVICES WITHOUT LOCATION MARKS ARE LOCATED IN H.E.C.C.
 2. ALPHABETICAL WIRE MARKS ARE PREFIXED BY: SUB-SYSTEM NO., SHEET NO., & LINE NO. (EXAMPLE: 251A2705A).
 3. POTENTIAL WIRE MARKS ARE PREFIXED BY: SUB-SYSTEM NO. & SHEET NO. (EXAMPLE: E51A27X1).
 4. DEVICE DESIGNATIONS ARE PREFIXED BY: UNIT AND SYSTEM NO. (EXAMPLE: 1E51-F077), EXCEPT AS NOTED (SEE NOTE 7).
 5. VALVE SHOWN IN FULL CLOSED POSITION.
 6. FOR GRAPHIC STANDARDS REFER TO DRAWING 0-200-001.
 7. THE FOLLOWING DEVICES ARE PREFIXED BY 1E51A: 539 - SWITCH
 8. SWITCH POSITION FOR REMOTE SHUTDOWN TRANSFER AND CONTROL SWITCHES IC61A-54, IC61A-559 ARE SHOWN ON DRAWING 0-208-039.

TYPE	LIMIT SW. CONTACT DEVELOPMENT			CONTACT LOCATION
	VALVE POSITION		FULL CLOSED	
NO.	FULL OPEN	A		B
1				SPARE
2				SPARE
3				23
4				05
5				SPARE
6				SPARE
7				21
8				SPARE
9				SPARE
10				SPARE
11				RCIC 208-039
12				SPARE
13				SPARE
14				SPARE
15				SPARE
16				SPARE

- 17 CLOSING TORQUE SWITCH INTERRUPTS CONTROL CIRCUIT IF MECHANICAL OVERLOAD OCCURS DURING CLOSING CYCLE OR FULLY CLOSED VALVE.
- 18 OPENING TORQUE SWITCH INTERRUPTS CONTROL CIRCUIT IF MECHANICAL OVERLOAD OCCURS DURING OPENING CYCLE OR FULLY OPENED VALVE.

— CLOSED CONTACT
- - - OPEN CONTACT

ROTOR 3 AMP'S CAN BE SET AT VALVE POSITION: FULL OPEN, FULL CLOSED OR ANY POSITION IN BETWEEN AS INDICATED BY POINTS A AND B.
REF: PHILA. GEAR CORP. DWG. 15-877-2759-3 REV. A

539/IH13-P601 CONTROL SWITCH			
(CAM) CONTACTS	NAMPLATE (FV)		CONTACT LOCATION
	CLOSE	AUTO/OPEN	
TF 1 2	X		SPARE
TR 3 4		X	05
BF 5 6	X		17
BR 7 8		X	SPARE
OPER & BLOCK	X - CLOSED CONTACT		
CR/2940-US203A			SPRING RETURN TO AUTO

REMOTE SHUTDOWN
Ⓧ NUCLEAR SAFETY RELATED

THE CLEVELAND ELECTRIC ILLUMINATING CO.			
PERRY NUCLEAR POWER PLANT UNIT 1			
ELECTRICAL-ELEMENTARY DIAGRAM			
REACTOR CORE ISOLATION COOLING SYSTEM			
VACUUM BREAKER ISOLATION			
MOV F077 (OUTBOARD)			
7-28-77	CONSTRUCTION	TFP	
	PRELIMINARY		
	RELEASED FOR	ENGR.	
GILBERT ASSOCIATES, INC.			
ENGINEERS AND CONSULTANTS			
044549-000	READING PA.		
	WORK ORDER		
	MADE	CHKD.	DR. APP. ENG. APP. DATE
7-28-77	54	4549	B-208-075 E51 A27 D
DRAWING NUMBER SYSTEM SH. NO. REV.			

REV	MADE	CHKD	APPROVALS	DATE	REV	MADE	CHKD	APPROVALS	DATE	REV	MADE	CHKD	APPROVALS	DATE	REV	MADE	CHKD	APPROVALS	DATE	REV	MADE	CHKD	APPROVALS	DATE	
ADDED REMOTE SHUTDOWN PANEL COMPARTMENT DESIGNATION AND CLASS 1E RELAY OPERATION					CHANGED FUSE					ADDED FITS INFORMATION CHANGED FUSE INFORM					REVISED LS CONTACTS, RELAYS AND WIRING.										
D YZ RM DEC 1974					C CCS RMH DEG RAM 11-26-79					B RMH RMH DEG RAM 7-21-79					A WW RMH DEG RAM 7-22-78										
ELEM DIAG 1E51-F077																									

RIDS

8212160746

