

11

11

5.8

8.5

11

17

11

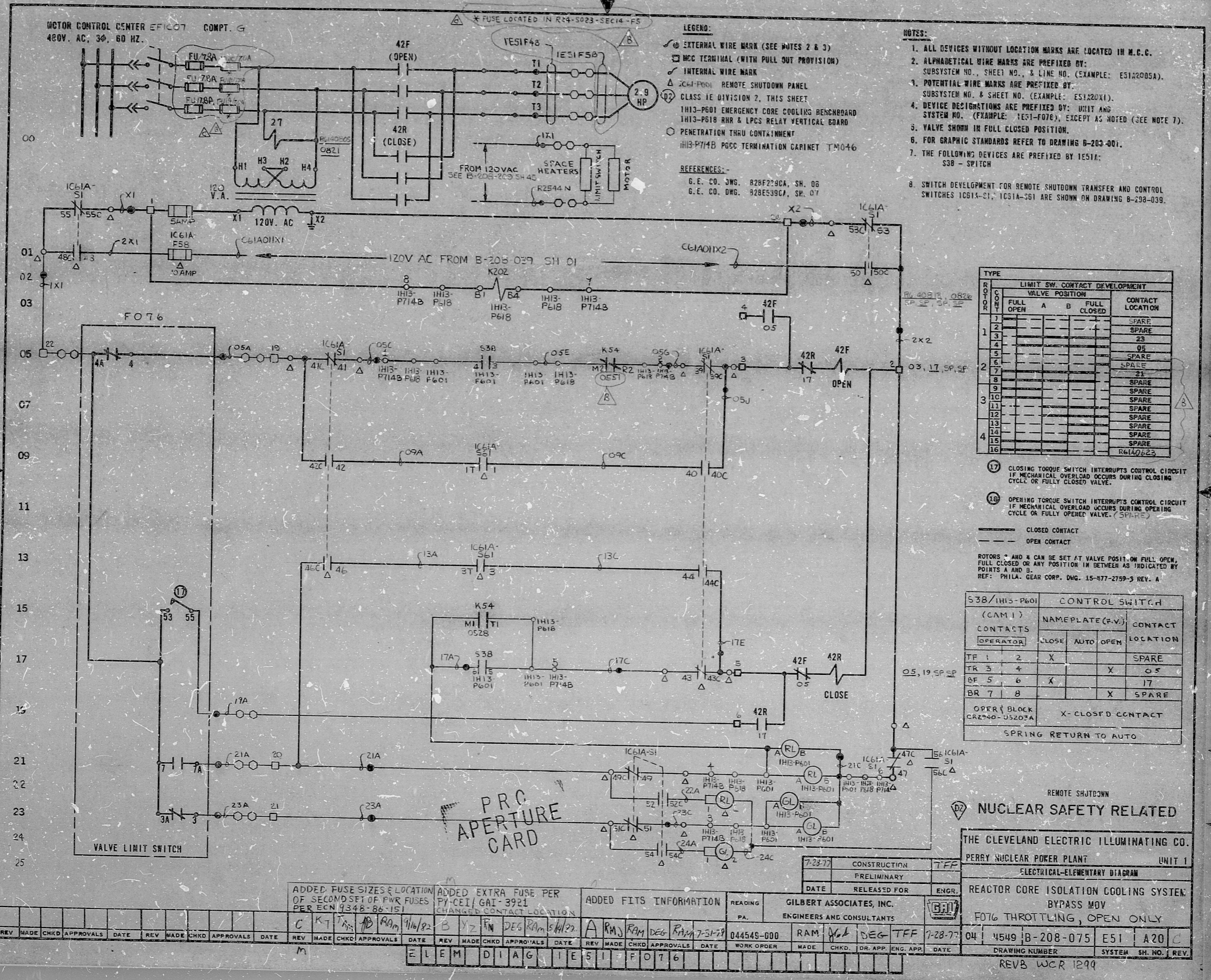
11

5.8

8.5

11

17



- LEGEND:**
- ⊙ EXTERNAL WIRE MARK (SEE NOTES 2 & 3)
  - ⊙ MCC TERMINAL (WITH PULL OUT PROVISION)
  - ⊙ INTERNAL WIRE MARK
  - ⊙ 2C41-P601 REMOTE SHUTDOWN PANEL CLASS 1E DIVISION 2, THIS SHEET
  - ⊙ IH13-P601 EMERGENCY CORE COOLING BENCHBOARD
  - ⊙ IH13-P618 RHR & LPCS RELAY VERTICAL BOARD
  - ⊙ PENETRATION THRU CONTAINMENT
  - ⊙ IH13-P714B P60C TERMINATION CABINET TM046
- REFERENCES:-**
- G. E. CO. DWG. 828F229CA, SH. 06
  - G. E. CO. DWG. 828E539CA, SH. 07

- NOTES:**
1. ALL DEVICES WITHOUT LOCATION MARKS ARE LOCATED IN M.C.C.
  2. ALPHABETICAL WIRE MARKS ARE PREFIXED BY: SUBSYSTEM NO., SHEET NO., & LINE NO. (EXAMPLE: E51A2005A).
  3. POTENTIAL WIRE MARKS ARE PREFIXED BY: SUBSYSTEM NO. & SHEET NO. (EXAMPLE: E51A200X1).
  4. DEVICE DESIGNATIONS ARE PREFIXED BY: UNIT AND SYSTEM NO. (EXAMPLE: 1E01-F07E), EXCEPT AS NOTED (SEE NOTE 7).
  5. VALVE SHOWN IN FULL CLOSED POSITION.
  6. FOR GRAPHIC STANDARDS REFER TO DRAWING B-203-001.
  7. THE FOLLOWING DEVICES ARE PREFIXED BY 1E51A: S38 - SWITCH
  8. SWITCH DEVELOPMENT FOR REMOTE SHUTDOWN TRANSFER AND CONTROL SWITCHES 1C61A-S1, 1C51A-S61 ARE SHOWN ON DRAWING B-203-039.

ROW	COLUMN	LIMIT SW. CONTACT DEVELOPMENT			CONTACT LOCATION
		VALVE POSITION	A	B	
1	1				SPARE
1	2				SPARE
1	3				SPARE
1	4				05
1	5				SPARE
1	6				SPARE
1	7				21
1	8				SPARE
1	9				SPARE
1	10				SPARE
1	11				SPARE
1	12				SPARE
1	13				SPARE
1	14				SPARE
1	15				SPARE
1	16				R61A023

- 17 CLOSING TORQUE SWITCH INTERRUPTS CONTROL CIRCUIT IF MECHANICAL OVERLOAD OCCURS DURING CLOSING CYCLE OR FULLY CLOSED VALVE.
  - 18 OPENING TORQUE SWITCH INTERRUPTS CONTROL CIRCUIT IF MECHANICAL OVERLOAD OCCURS DURING OPENING CYCLE OR FULLY OPENED VALVE. (SPARE)
- CLOSED CONTACT  
- - - OPEN CONTACT
- ROTORS \* AND # CAN BE SET AT VALVE POS. OR FULL OPEN, FULL CLOSED OR ANY POSITION IN BETWEEN AS INDICATED BY POINTS A AND B.  
REF: PHILA. GEAR CORP. DNG. 15-877-2759-3 REV. A

S38/IH13-P601		CONTROL SWITCH			CONTACT LOCATION
(CAM 1)		NAMEPLATE (F.V.)			
CONTACTS	OPERATOR	CLOSE	AUTO	OPEN	
TF 1	2	X			SPARE
TR 3	4			X	05
BF 5	6	X			17
BR 7	8			X	SPARE
OPER. BLOCK CR290-05203A		X - CLOSED CONTACT			
SPRING RETURN TO AUTO					

REMOTE SHUTDOWN  
⊙ NUCLEAR SAFETY RELATED

THE CLEVELAND ELECTRIC ILLUMINATING CO.		PERRY NUCLEAR POWER PLANT		UNIT 1
ELECTRICAL-ELEMENTARY DIAGRAM				
REACTOR CORE ISOLATION COOLING SYSTEM BYPASS MOV				
F076 THROTTLING, OPEN ONLY				
7-23-77	CONSTRUCTION	TEF		
	PRELIMINARY			
	RELEASED FOR	ENGR.		
GILBERT ASSOCIATES, INC. ENGINEERS AND CONSULTANTS				
044549-000	RAM	YGL	DEG	TEF
7-28-77	04	4549	B-208-075	E51 A20 C
DRAWING NUMBER			SYSTEM SH. NO. REV.	
REVB WCR 1299				

REV	MADE	CHKD	APPROVALS	DATE	REV	MADE	CHKD	APPROVALS	DATE	REV	MADE	CHKD	APPROVALS	DATE	REV	MADE	CHKD	APPROVALS	DATE	
C	K7	TAS	RAM	9/16/82	B	Y2	FM	DEG	RAM	5/11/82	A	RM	RAM	DEG	RAM	7-31-79				

ADDED FUSE SIZES & LOCATION OF SECOND SET OF FWR FUSES PER ECN 934B-88-151

ADDED EXTRA FUSE PER PY-CEI/GAI-3921 CHANGED CONTACT LOCATION

ADDED FITS INFORMATION

READING PA. 044549-000

WORK ORDER MADE

ELEM DIAG I E51 F076



RIDS

8212160730

