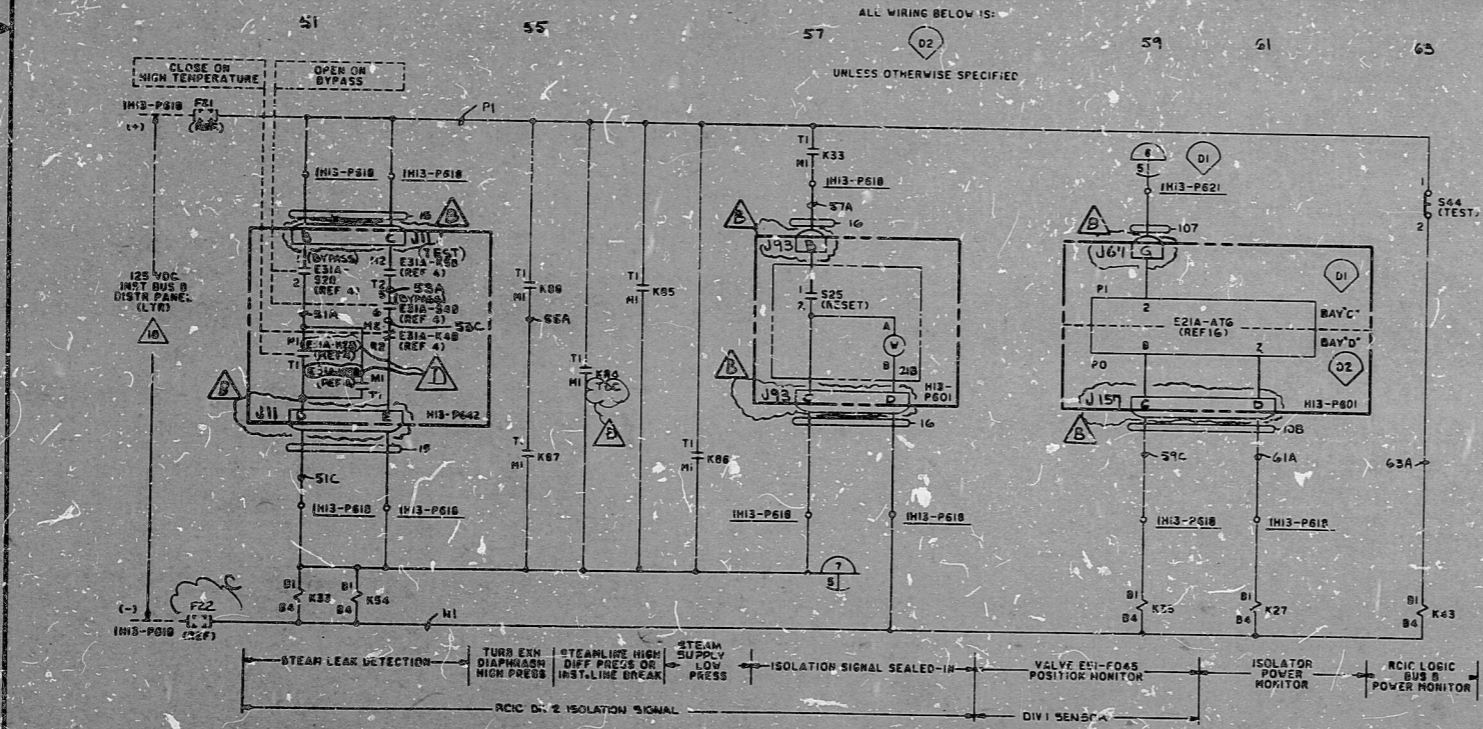


ALL WIRING ABOVE IS:
UNLESS OTHERWISE SPECIFIED

ALL WIRING BELOW IS:
UNLESS OTHERWISE SPECIFIED



- NOTES**
- 1. IH13-P715A TERMINATION CABINET
LINE CODE 42 TM068
LINE CODE 12, 14 TM059
LINE CODE 39 TM064
 - 2. IH13-P715A TERMINATION CABINET
LINE CODE 43 TM068

PRC
APERTURE
CARD

LINE CODES: 12, 14, 16, 37, 42, 43, 103, 106, 108.

GENERAL NOTES: 228539CA
SA'S REV'D
REACTOR CORE ISLN COOLING SYSTEM

NUCLEAR SAFETY RELATED
THE CLEVELAND ELECTRIC ILLUMINATING CO.

PERRY NUCLEAR POWER PLANT UNIT 1
ELECTRICAL-ELEMENTARY DIAGRAM

REACTOR CORE ISOLATION COOLING SYSTEM
LOGIC CIRCUITS A AND B

ADDED ATWS CIRCUITRY TER GE DWG REV. 9	REVISED PER GE DWG REV. 7	REVISED PER GE REV. 3, ADDED	ADDED FITS & PLUGS	REDRAWN PER G.E. REV. 1	READING PA.	GILBERT ASSOCIATES, INC. ENGINEERS AND CONSULTANTS	DATE 7-18-77	CONSTRUCTION PRELIMINARY	DATE 7-18-77	ENGR. J.W.Y. RAM	DATE 7-18-77	04	4549	B-208-075	ESI	ADS	E
REV. MADE	CHG. APPROVALS	DATE	REV. MADE	CHG. APPROVALS	DATE	REV. MADE	CHG. APPROVALS	DATE	REV. MADE	CHG. APPROVALS	DATE	REV. MADE	CHG. APPROVALS	DATE	REV. MADE	CHG. APPROVALS	DATE

ELEM DIAG ESIA LOGIC CIRCUITS A AND B

11
8.5
8.5
11
17

11
8.5
8.5
11
17

RDS

8212160679

