

11

11

8.5

8.5

11

17

11

11

8.5

8.5

11

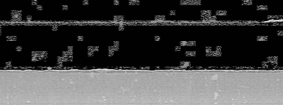
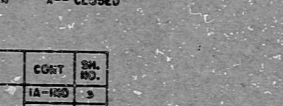
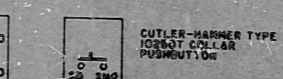
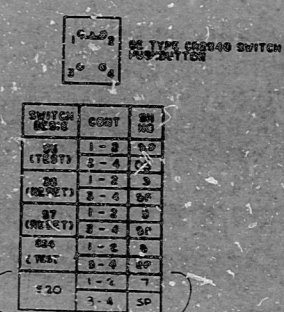
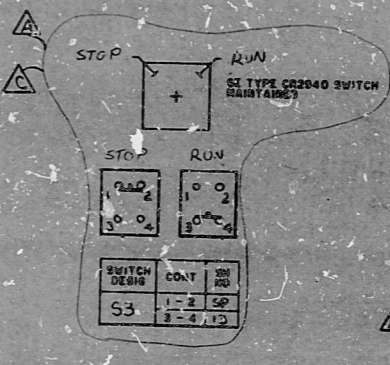
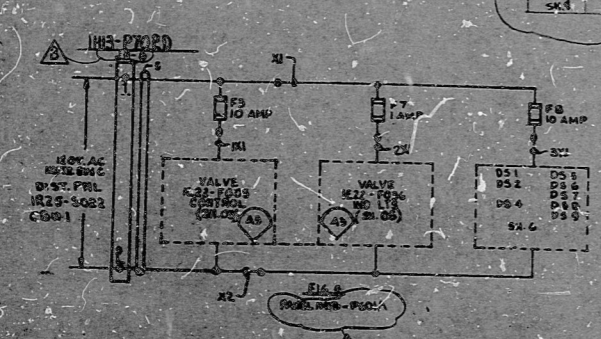
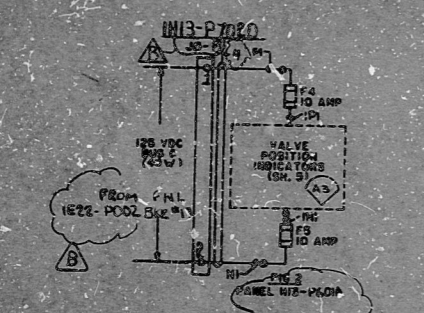
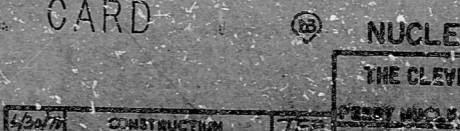
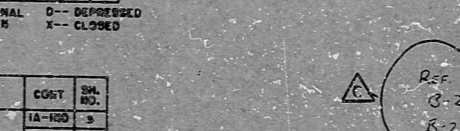
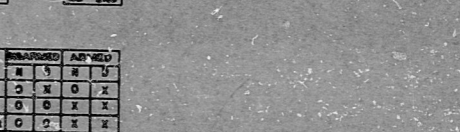
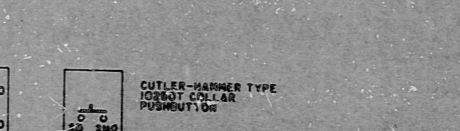
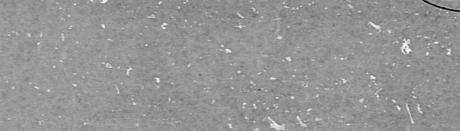
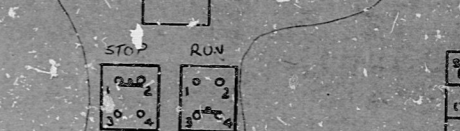
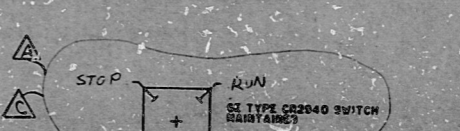
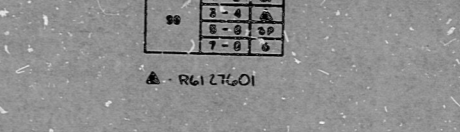
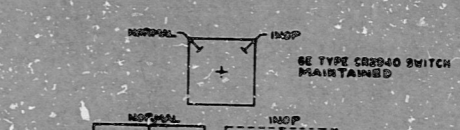
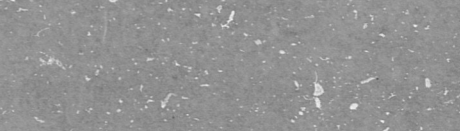
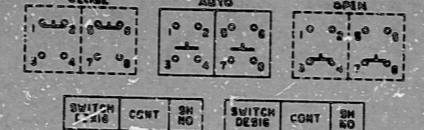
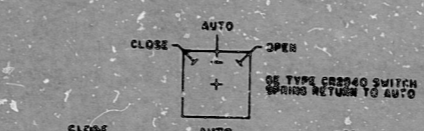
17

DE TYPE WFO RELAY TABULATION

RELAY	NO.	TYPE	CONTACTS	COIL	RESISTANCE	WINDING	WIRE GAUGE	WIRE COLOR
RL 1	27603	SP	SP	SP	1000 Ω	SP	SP	SP

REARBY TYPE GPH RELAY TABULATION

RELAY	NO.	TYPE	CONTACTS	COIL	RESISTANCE	WINDING	WIRE GAUGE	WIRE COLOR
RL 1	27603	SP	SP	SP	1000 Ω	SP	SP	SP
RL 2	27604	SP	SP	SP	1000 Ω	SP	SP	SP
RL 3	27605	SP	SP	SP	1000 Ω	SP	SP	SP
RL 4	27606	SP	SP	SP	1000 Ω	SP	SP	SP
RL 5	27607	SP	SP	SP	1000 Ω	SP	SP	SP
RL 6	27608	SP	SP	SP	1000 Ω	SP	SP	SP
RL 7	27609	SP	SP	SP	1000 Ω	SP	SP	SP
RL 8	27610	SP	SP	SP	1000 Ω	SP	SP	SP
RL 9	27611	SP	SP	SP	1000 Ω	SP	SP	SP
RL 10	27612	SP	SP	SP	1000 Ω	SP	SP	SP
RL 11	27613	SP	SP	SP	1000 Ω	SP	SP	SP
RL 12	27614	SP	SP	SP	1000 Ω	SP	SP	SP
RL 13	27615	SP	SP	SP	1000 Ω	SP	SP	SP
RL 14	27616	SP	SP	SP	1000 Ω	SP	SP	SP
RL 15	27617	SP	SP	SP	1000 Ω	SP	SP	SP
RL 16	27618	SP	SP	SP	1000 Ω	SP	SP	SP
RL 17	27619	SP	SP	SP	1000 Ω	SP	SP	SP
RL 18	27620	SP	SP	SP	1000 Ω	SP	SP	SP
RL 19	27621	SP	SP	SP	1000 Ω	SP	SP	SP
RL 20	27622	SP	SP	SP	1000 Ω	SP	SP	SP
RL 21	27623	SP	SP	SP	1000 Ω	SP	SP	SP
RL 22	27624	SP	SP	SP	1000 Ω	SP	SP	SP
RL 23	27625	SP	SP	SP	1000 Ω	SP	SP	SP
RL 24	27626	SP	SP	SP	1000 Ω	SP	SP	SP
RL 25	27627	SP	SP	SP	1000 Ω	SP	SP	SP
RL 26	27628	SP	SP	SP	1000 Ω	SP	SP	SP
RL 27	27629	SP	SP	SP	1000 Ω	SP	SP	SP
RL 28	27630	SP	SP	SP	1000 Ω	SP	SP	SP
RL 29	27631	SP	SP	SP	1000 Ω	SP	SP	SP
RL 30	27632	SP	SP	SP	1000 Ω	SP	SP	SP
RL 31	27633	SP	SP	SP	1000 Ω	SP	SP	SP
RL 32	27634	SP	SP	SP	1000 Ω	SP	SP	SP
RL 33	27635	SP	SP	SP	1000 Ω	SP	SP	SP
RL 34	27636	SP	SP	SP	1000 Ω	SP	SP	SP
RL 35	27637	SP	SP	SP	1000 Ω	SP	SP	SP
RL 36	27638	SP	SP	SP	1000 Ω	SP	SP	SP
RL 37	27639	SP	SP	SP	1000 Ω	SP	SP	SP
RL 38	27640	SP	SP	SP	1000 Ω	SP	SP	SP
RL 39	27641	SP	SP	SP	1000 Ω	SP	SP	SP
RL 40	27642	SP	SP	SP	1000 Ω	SP	SP	SP
RL 41	27643	SP	SP	SP	1000 Ω	SP	SP	SP
RL 42	27644	SP	SP	SP	1000 Ω	SP	SP	SP
RL 43	27645	SP	SP	SP	1000 Ω	SP	SP	SP
RL 44	27646	SP	SP	SP	1000 Ω	SP	SP	SP
RL 45	27647	SP	SP	SP	1000 Ω	SP	SP	SP
RL 46	27648	SP	SP	SP	1000 Ω	SP	SP	SP
RL 47	27649	SP	SP	SP	1000 Ω	SP	SP	SP
RL 48	27650	SP	SP	SP	1000 Ω	SP	SP	SP
RL 49	27651	SP	SP	SP	1000 Ω	SP	SP	SP
RL 50	27652	SP	SP	SP	1000 Ω	SP	SP	SP
RL 51	27653	SP	SP	SP	1000 Ω	SP	SP	SP
RL 52	27654	SP	SP	SP	1000 Ω	SP	SP	SP
RL 53	27655	SP	SP	SP	1000 Ω	SP	SP	SP
RL 54	27656	SP	SP	SP	1000 Ω	SP	SP	SP
RL 55	27657	SP	SP	SP	1000 Ω	SP	SP	SP
RL 56	27658	SP	SP	SP	1000 Ω	SP	SP	SP
RL 57	27659	SP	SP	SP	1000 Ω	SP	SP	SP
RL 58	27660	SP	SP	SP	1000 Ω	SP	SP	SP
RL 59	27661	SP	SP	SP	1000 Ω	SP	SP	SP
RL 60	27662	SP	SP	SP	1000 Ω	SP	SP	SP
RL 61	27663	SP	SP	SP	1000 Ω	SP	SP	SP
RL 62	27664	SP	SP	SP	1000 Ω	SP	SP	SP
RL 63	27665	SP	SP	SP	1000 Ω	SP	SP	SP
RL 64	27666	SP	SP	SP	1000 Ω	SP	SP	SP
RL 65	27667	SP	SP	SP	1000 Ω	SP	SP	SP
RL 66	27668	SP	SP	SP	1000 Ω	SP	SP	SP
RL 67	27669	SP	SP	SP	1000 Ω	SP	SP	SP
RL 68	27670	SP	SP	SP	1000 Ω	SP	SP	SP
RL 69	27671	SP	SP	SP	1000 Ω	SP	SP	SP
RL 70	27672	SP	SP	SP	1000 Ω	SP	SP	SP
RL 71	27673	SP	SP	SP	1000 Ω	SP	SP	SP
RL 72	27674	SP	SP	SP	1000 Ω	SP	SP	SP
RL 73	27675	SP	SP	SP	1000 Ω	SP	SP	SP
RL 74	27676	SP	SP	SP	1000 Ω	SP	SP	SP
RL 75	27677	SP	SP	SP	1000 Ω	SP	SP	SP
RL 76	27678	SP	SP	SP	1000 Ω	SP	SP	SP
RL 77	27679	SP	SP	SP	1000 Ω	SP	SP	SP
RL 78	27680	SP	SP	SP	1000 Ω	SP	SP	SP
RL 79	27681	SP	SP	SP	1000 Ω	SP	SP	SP
RL 80	27682	SP	SP	SP	1000 Ω	SP	SP	SP
RL 81	27683	SP	SP	SP	1000 Ω	SP	SP	SP
RL 82	27684	SP	SP	SP	1000 Ω	SP	SP	SP
RL 83	27685	SP	SP	SP	1000 Ω	SP	SP	SP
RL 84	27686	SP	SP	SP	1000 Ω	SP	SP	SP
RL 85	27687	SP	SP	SP	1000 Ω	SP	SP	SP
RL 86	27688	SP	SP	SP	1000 Ω	SP	SP	SP
RL 87	27689	SP	SP	SP	1000 Ω	SP	SP	SP
RL 88	27690	SP	SP	SP	1000 Ω	SP	SP	SP
RL 89	27691	SP	SP	SP	1000 Ω	SP	SP	SP
RL 90	27692	SP	SP	SP	1000 Ω	SP	SP	SP
RL 91	27693	SP	SP	SP	1000 Ω	SP	SP	SP
RL 92	27694	SP	SP	SP	1000 Ω	SP	SP	SP
RL 93	27695	SP	SP	SP	1000 Ω	SP	SP	SP
RL 94	27696	SP	SP	SP	1000 Ω	SP	SP	SP
RL 95	27697	SP	SP	SP	1000 Ω	SP	SP	SP
RL 96	27698	SP	SP	SP	1000 Ω	SP	SP	SP
RL 97	27699	SP	SP	SP	1000 Ω	SP	SP	SP
RL 98	27700	SP	SP	SP	1000 Ω	SP	SP	SP
RL 99	27701	SP	SP	SP	1000 Ω	SP	SP	SP
RL 100	27702	SP	SP	SP	1000 Ω	SP	SP	SP



PRC APERTURE CARD

REF: 8-21-1065 SH-15 BLOCK DIAGRAM  
8-21-209 SH-19 BLOCK DIAGRAM

NUCLEAR SAFETY RELATED

THE CLEVELAND ELECTRIC ILLUMINATING CO.

CONSTRUCTION

DATE

REVISIONS

ENGINEERS AND CHECKERS

DATE

REVISIONS

DATE

REVISIONS

ADDED WFO CIRCUITRY PER GE DATA SHEET	REVISED SH-15 SH-19 REV. PANEL; ADDED REFERENCES REL. WINDING SS, AS PER GE BLOCK DIAG.	ADDED FITS INFORMATION CHANGED JUNC BOXES	REVISED RELAY TABULATIONS, NAMEPLATE DESIG. FOR S3, AND ADDED S30	READING	PA	CHLORNEY ASSOCIATES, INC.	ENGINEERS AND CHECKERS
REV. 1	REV. 2	REV. 3	REV. 4	REV. 5	REV. 6	REV. 7	REV. 8

RIPS

82L2160511

