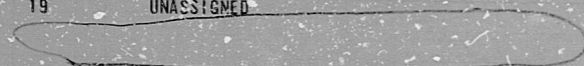


B-208-065

SHEET 60

INDEX

- 01 NOTES, REFERENCES AND TABULATIONS
- 02 SWITCH DEVELOPMENT, RELAY TABULATIONS AND POWER DISTRIBUTION
- 03 RELAY LOGIC
- 04 TESTABILITY CIRCUITS
- 05 PROCESS INSTRUMENTATION, COMPUTER, & SOV F005
- 06 STATUS LIGHTS
- 07 TESTABILITY CARD FILE TABULATIONS AND POWER SUPPLIES
- 08 TEST RETURN TO CONDENSATE STORAGE TANK MOV F011
- 09 MINIMUM FLOW TO SUPPRESSION POOL MOV F012
- 10 PUMP SUCTION FROM SUPPRESSION POOL MOV F015
- 11 TEST RETURN TO SUPPRESSION POOL MOV F023
- 12 PUMP SUCTION FROM CONDENSATE STORAGE TANK MOV F001
- 13 STANDBY WATER LEG PUMP C003 & VALVE F036
- 14 PUMP INJECTION SHUTOFF MOV F004
- 15 TEST BYPASS TO CONDENSATE STORAGE TANK MOV F013
- 16 UNASSIGNED
- 17 UNASSIGNED
- 18 UNASSIGNED
- 19 UNASSIGNED



B-208-065

100

LOCA SIGNAL

101

INOP AND BYPASS

PRC
APERTURE
CARD

THE CLEVELAND ELECTRIC ILLUMINATING CO.																									
PERRY NUCLEAR POWER PLANT UNIT 1																									
ELECTRICAL-ELEMENTARY DIAGRAM																									
HIGH PRESSURE CORE SPRAY SYSTEM																									
INDEX																									
DELETED SH 20 ³⁴																									
GILBERT ASSOCIATES, INC. ENGINEERS AND CONSULTANTS																									
REV	MADE	CHKD	APPROVALS	DATE	REV	MADE	CHKD	APPROVALS	DATE	REV	MADE	CHKD	APPROVALS	DATE	REV	MADE	CHKD	APPROVALS	DATE	REV	MADE	CHKD	APPROVALS	DATE	
ELEM DIAG IE 22 R INDEX																									

11"

11"

8.5"

8.5"

11"

17"

11"

11"

8.5"

8.5"

11"

17"

RIDS

8212160507

