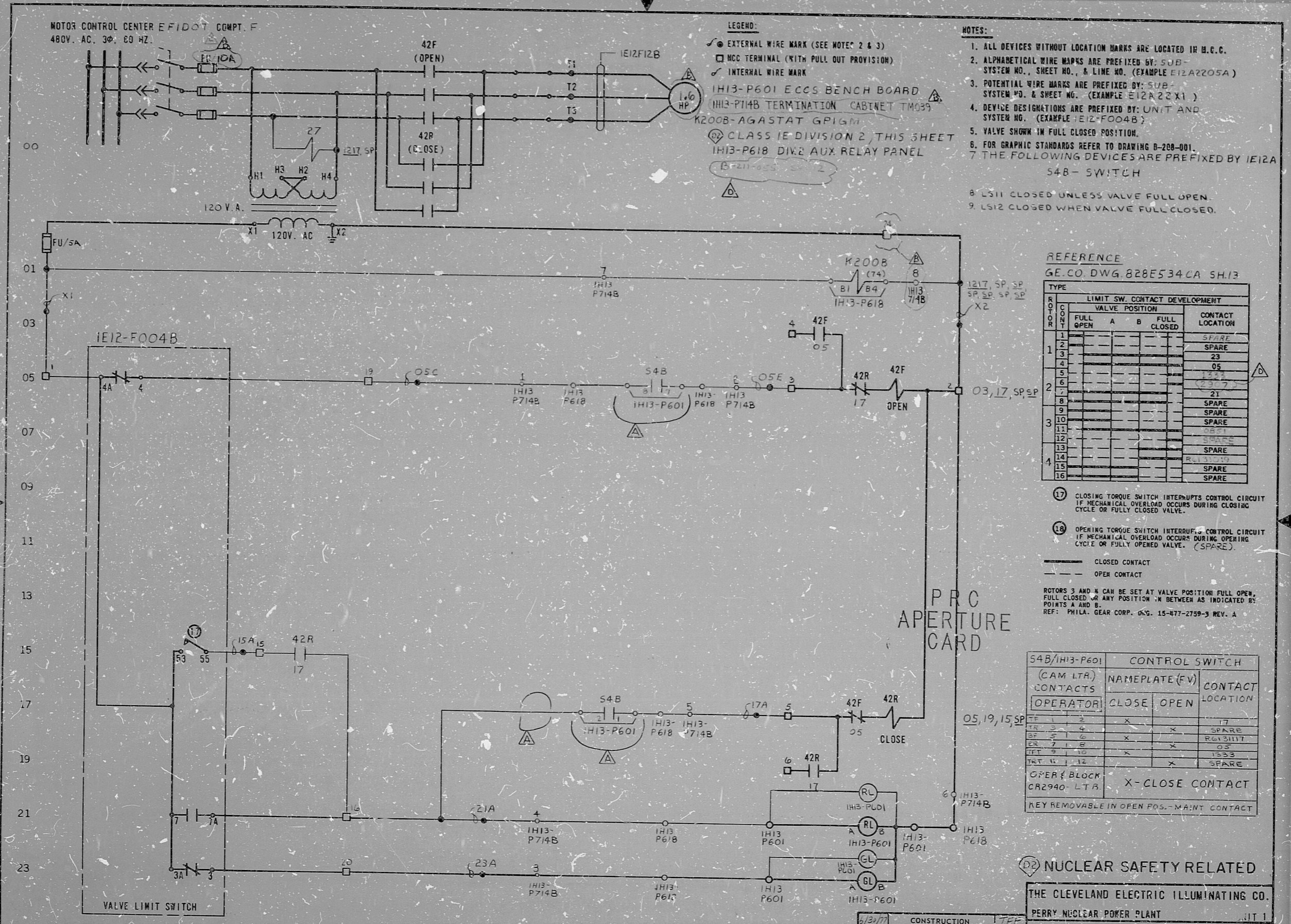


MOTOR CONTROL CENTER EFIDOT COMPT. F.  
480V. AC. 3Ø. 60 HZ.



- LEGEND:**
- EXTERNAL WIRE MARK (SEE NOTE 2 & 3)
  - MCC TERMINAL (WITH PULL OUT PROVISION)
  - INTERNAL WIRE MARK
  - △ IE13-P601 ECCS BENCH BOARD
  - △ IE13-P14B TERMINATION CABINET TM639
  - △ K200B-AGASTAT GP1GM
  - CLASS IE DIVISION 2, THIS SHEET
  - △ IE13-P618 DIV. 2 AUX RELAY PANEL
  - △ IE12-FOO4B

- NOTES:**
1. ALL DEVICES WITHOUT LOCATION MARKS ARE LOCATED IN M.C.C.
  2. ALPHABETICAL WIRE MARKS ARE PREFIXED BY: SUB-SYSTEM NO., SHEET NO., & LINE NO. (EXAMPLE IE12A2205A)
  3. POTENTIAL WIRE MARKS ARE PREFIXED BY: SUB-SYSTEM NO. & SHEET NO. (EXAMPLE IE12A22X1)
  4. DEVICE DESIGNATIONS ARE PREFIXED BY: UNIT AND SYSTEM NO. (EXAMPLE IE12-FOO4B)
  5. VALVE SHOWN IN FULL CLOSED POSITION.
  6. FOR GRAPHIC STANDARDS REFER TO DRAWING B-208-001.
  7. THE FOLLOWING DEVICES ARE PREFIXED BY IE12A  
S4B- SWITCH
  8. LS11 CLOSED UNLESS VALVE FULL OPEN.
  9. LS12 CLOSED WHEN VALVE FULL CLOSED.

**REFERENCE**  
GE CO. DWG 828E534CA SH13

ROTOR	LIMIT SW. CONTACT DEVELOPMENT			CONTACT LOCATION
	VALVE POSITION	A	B	
1	1			SPARE
2	2			SPARE
3	3			23
4	4			05
5	5			17
6	6			21
7	7			SPARE
8	8			SPARE
9	9			SPARE
10	10			SPARE
11	11			SPARE
12	12			SPARE
13	13			SPARE
14	14			SPARE
15	15			SPARE
16	16			SPARE

- 17 CLOSING TORQUE SWITCH INTERRUPTS CONTROL CIRCUIT IF MECHANICAL OVERLOAD OCCURS DURING CLOSING CYCLE OR FULLY CLOSED VALVE.
- 18 OPENING TORQUE SWITCH INTERRUPTS CONTROL CIRCUIT IF MECHANICAL OVERLOAD OCCURS DURING OPENING CYCLE OR FULLY OPENED VALVE. (SPARE).

— CLOSED CONTACT  
- - - OPEN CONTACT

ROTOR 3 AND 4 CAN BE SET AT VALVE POSITION FULL OPEN, FULL CLOSED OR ANY POSITION IN BETWEEN AS INDICATED BY POINTS A AND B.  
REF: PHILA. GEAR CORP. C.G. 15-477-2759-3 REV. A

PRC APERTURE CARD

S4B/IE13-P601 CONTROL SWITCH		CONTACT LOCATION
(CAM LTR) CONTACTS	NAMEPLATE (FV)	
OPERATOR	CLOSE OPEN	
1	2	17
3	4	SPARE
5	6	RAV 31117
7	8	05
9	10	1333
11	12	SPARE
OPERATOR BLOCK CR2940 LTR		X-CLOSE CONTACT

KEY REMOVABLE IN OPEN POS. - MAINT. CONTACT

NUCLEAR SAFETY RELATED

THE CLEVELAND ELECTRIC ILLUMINATING CO.  
PERRY NUCLEAR POWER PLANT  
ELECTRICAL-ELEMENTARY DIAGRAM  
RESIDUAL HEAT REMOVAL SYSTEM  
RHR PUMP C302B SUCTION MOV  
F004B

REV	MADE	CHKD	APPROVALS	DATE	REV	MADE	CHKD	APPROVALS	DATE	REV	MADE	CHKD	APPROVALS	DATE	REV	MADE	CHKD	APPROVALS	DATE	REV	MADE	CHKD	APPROVALS	DATE	REV	MADE	CHKD	APPROVALS	DATE	REV	MADE	CHKD	APPROVALS	DATE	REV	MADE	CHKD	APPROVALS	DATE																																																																																																																
1					2	RAM	DEL	RAM	11/12	3	CJS	RAM	DES	RAM	11/9/79	4	RAM	DES	RAM	8-17-77	5	WW	RAM	DES	RAM	11/12/77	6	RAM	DES	RAM	6/30/77	7	RAM	DES	RAM	6/30/77	8	RAM	DES	RAM	6/30/77	9	RAM	DES	RAM	6/30/77	10	RAM	DES	RAM	6/30/77	11	RAM	DES	RAM	6/30/77	12	RAM	DES	RAM	6/30/77	13	RAM	DES	RAM	6/30/77	14	RAM	DES	RAM	6/30/77	15	RAM	DES	RAM	6/30/77	16	RAM	DES	RAM	6/30/77	17	RAM	DES	RAM	6/30/77	18	RAM	DES	RAM	6/30/77	19	RAM	DES	RAM	6/30/77	20	RAM	DES	RAM	6/30/77	21	RAM	DES	RAM	6/30/77	22	RAM	DES	RAM	6/30/77	23	RAM	DES	RAM	6/30/77	24	RAM	DES	RAM	6/30/77	25	RAM	DES	RAM	6/30/77	26	RAM	DES	RAM	6/30/77	27	RAM	DES	RAM	6/30/77	28	RAM	DES	RAM	6/30/77	29	RAM	DES	RAM	6/30/77	30	RAM	DES	RAM	6/30/77

ELEM DIAG IE12-FOO4B

11  
8.5"  
11"  
8.5"  
17"

11  
8.5"  
11"  
8.5"  
17"

RIDS

82L2160262

