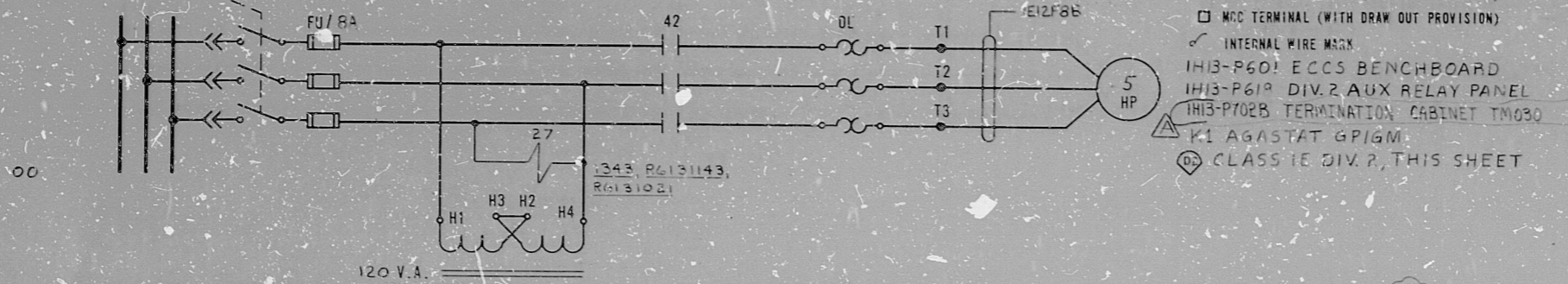


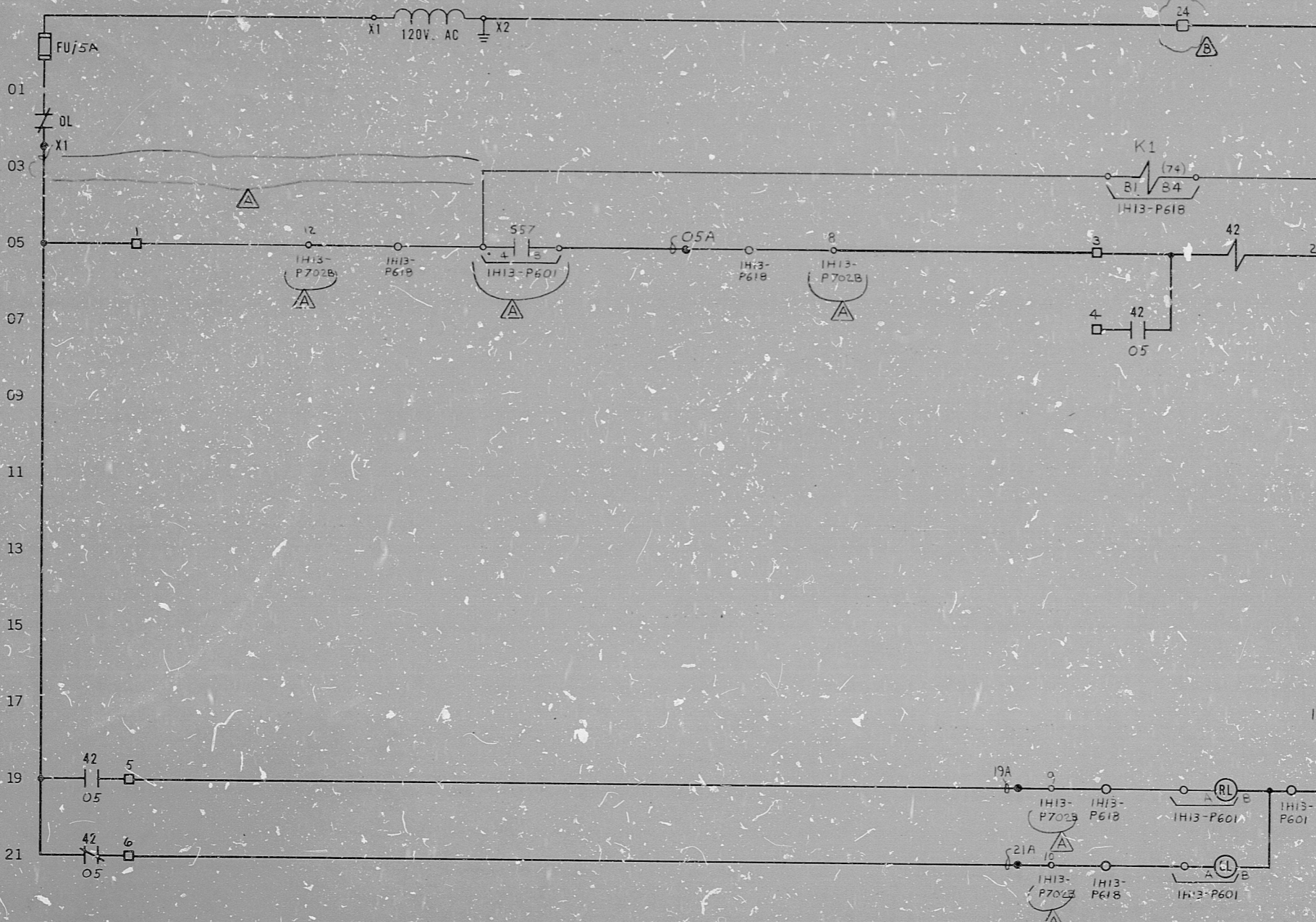
MOTOR CONTROL CENTER FF108 COMPT D  
480V. AC, 3Φ, 60 HZ.



- LEGEND:**
- EXTERNAL WIRE MARK (SEE NOTES 2 AND 3)
  - MDC TERMINAL (WITH DRAW OUT PROVISION)
  - INTERNAL WIRE MARK
  - △ IH13-P601 ECCS BENCHBOARD
  - △ IH13-P618 DIV. 2 AUX RELAY PANEL
  - △ IH13-P702B TERMINATION CABINET TM030
  - △ K1 AGASTAT GPI/GM
  - ⊙ CLASS 1E DIV. 2, THIS SHEET

- NOTES:**
1. ALL DEVICES WITHOUT LOCATION MARKS ARE LOCATED IN M.C.C.
  2. ALPHABETICAL WIRE MARKS ARE PREFIXED BY: SUB-SYSTEM NO., SHEET NO., AND LINE NO. (EXAMPLE E12A2005A)
  3. POTENTIAL WIRE MARKS ARE PREFIXED BY: SUB-SYSTEM NO. AND SHEET NO. (EXAMPLE E12A20X1)
  4. DEVICE DESIGNATIONS ARE PREFIXED BY UNIT AND SYSTEM NO. (EXAMPLE E12-C003) EXCEPT AS NOTED (SEE NOTE 6)
  5. FOR GRAPHIC STANDARDS, REFER TO DRAWING 8-20A-001. NOTE 6
  6. THE FOLLOWING DEVICES ARE PREFIXED BY E12A: 557-SWITCH

REFERENCE:  
GE CO. DWG. 828E534CA SH.15



PRC  
APERTURE  
CARD

557/IH13-P601	CONTROL SWITCH	
(CAM ?)	NAMEPLATE (FV)	CONTACT LOCATION
CONTACTS	OFF	ON
OPERATOR	X	SPARE
F 1 2	X	O5
R 3 4	X	
OPER & BLOCK	X-CLOSED CONTACT	
CR2340-UB202A		
MAINTAINED CONTACTS		

⊙ NUCLEAR SAFETY RELATED

THE CLEVELAND ELECTRIC ILLUMINATING CO.

PERRY NUCLEAR POWER PLANT UNIT 1

ELECTRICAL-ELEMENTARY DIAGRAM

RESIDUAL HEAT REMOVAL SYSTEM

WATER LEG PUMP C003

ADDED FITS INFORMATION												REV. 557 CONTACT DESIGN, WIRING AND TERM. POINT LOCATIONS			READING PA.			GILBERT ASSOCIATES, INC. ENGINEERS AND CONSULTANTS			DATE RELEASED FOR ENGR.										
REV.	MADE	CHKD	APPROVALS	DATE	REV.	MADE	CHKD	APPROVALS	DATE	REV.	MADE	CHKD	APPROVALS	DATE	REV.	MADE	CHKD	APPROVALS	DATE	REV.	MADE	CHKD	APPROVALS	DATE	044549-000	04	4549	B-208-055	E12	1A20	C
ELEM DIAG I E12-C003																															
DRAWING NUMBER												SYSTEM SH. NO. REV.																			

RIDS

8212160255

