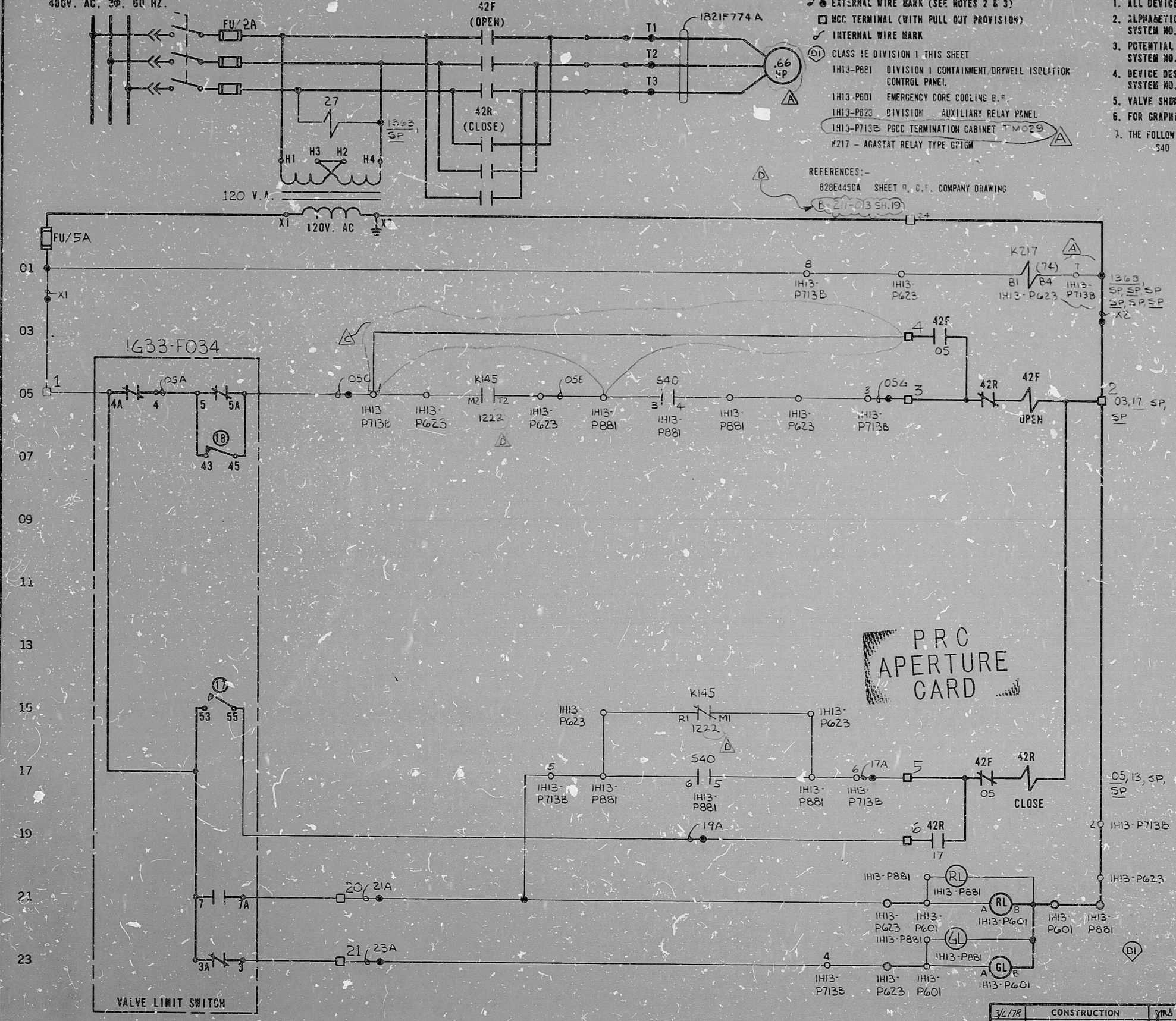


MOTOR CONTROL CENTER EF-A07 COMPT. AA
480V. AC, 3Ø, 60 HZ.



- LEGEND:**
- EXTERNAL WIRE MARK (SEE NOTES 2 & 3)
 - MCC TERMINAL (WITH PULL OUT PROVISION)
 - INTERNAL WIRE MARK
 - CLASS 1E DIVISION 1 THIS SHEET
 - 1H13-P821 DIVISION 1 CONTAINMENT DRYWELL ISOLATION CONTROL PANEL
 - 1H13-P601 EMERGENCY CORE COOLING R.P.
 - 1H13-P623 DIVISION 1 AUXILIARY RELAY PANEL
 - 1H13-P713B PCC TERMINATION CABINET TWO29
 - #217 - AGASTAT RELAY TYPE G71GM

- NOTES:**
1. ALL DEVICES WITHOUT LOCATION MARKS ARE LOCATED IN M.C.C.
 2. ALPHABETICAL WIRE MARKS ARE PREFIXED BY: SYSTEM NO., SHEET NO., & LINE NO. (EXAMPLE: P21H3305A)
 3. POTENTIAL WIRE MARKS ARE PREFIXED BY: SUB-SYSTEM NO. & SHEET NO. (EXAMPLE: B21H33X1)
 4. DEVICE DESIGNATIONS ARE PREFIXED BY: SYSTEM NO. (EXAMPLE: 1G33-F034) EXCEPT AS NOTED, SEE NOTE 7.
 5. VALVE SHOWN IN FULL CLOSED POSITION.
 6. FOR GRAPHIC STANDARDS REFER TO DRAWING 9-208-001.
 7. THE FOLLOWING DEVICES ARE PREFIXED BY B21H:
 - S40 - SWITCH

REFERENCES:
B29E445CA SHEET 9, G.I. COMPANY DRAWING
E-21-713 SH.19

ROTOR	LIMIT SW. CONTACT DEVELOPMENT			CONTACT LOCATION
	FULL OPEN	A B FULL CLOSED		
1				SPARE
2				SPARE
3				05
4				23
5				05
6				SPARE
7				21
8				SPARE
9				SPARE
10				SPARE
11				SPARE
12				SPARE
13				SPARE
14				SPARE
15				SPARE
16				SPARE

- 17 CLOSING TORQUE SWITCH INTERRUPTS CONTROL CIRCUIT IF MECHANICAL OVERLOAD OCCURS DURING CLOSING CYCLE OR FULLY CLOSED VALVE.
 - 18 OPENING TORQUE SWITCH INTERRUPTS CONTROL CIRCUIT IF MECHANICAL OVERLOAD OCCURS DURING OPENING CYCLE OR FULLY OPENED VALVE.
- CLOSED CONTACT
- - - OPEN CONTACT
- ROTOR 3 AND 4 CAN BE SET AT VALVE POSITION FULL OPEN, FULL CLOSED OR ANY POSITION IN BETWEEN AS INDICATED BY POINTS A AND B.
REF: P11LA. GEAR CORP. DWG. 15-877-2759-3 REV. A

PRC APERTURE CARD

S40/1H3-P881 CONTROL SWITCH		NAMEPLATE (FV)		CONTACT LOCATION
CONTACTS		CLOSE	NORM OPEN	
OPERATOR				
TR	1 2	X		SPARE
TR	3 4		X	05
BF	5 6	X		17
BR	7 8		X	SPARE
OPERATOR BLOCK CR2940 US203A		X-CLOSED CONTACT		
SPRING RETURN TO NORMAL				

NUCLEAR SAFETY RELATED
THE CLEVELAND ELECTRIC ILLUMINATING CO.
PERRY NUCLEAR POWER PLANT UNIT 1
ELECTRICAL-ELEMENTARY DIAGRAM
NUCLEAR STEAM SUPPLY SHUTOFF SYSTEM
RWCU SYSTEM VALVE (OUTBOARD)
1G33-F034

REV	MADE	CHKD	APPROVALS	DATE	REV	MADE	CHKD	APPROVALS	DATE	REV	MADE	CHKD	APPROVALS	DATE	REV	MADE	CHKD	APPROVALS	DATE	WORK ORDER	MADE	CHKD	DR. APP.	ENG. APP.	DATE	DRAWING NUMBER	SYSTEM IN. NO.	REV.							
D	P	TAM	DEG	RAM	2/3/82	C	Y	RM	DEG	RAM	2-12-81	B	RM	RAM	DEG	RAM	1-4-80	A	RM	RAM	DEG	RAM	7-15-79	044549-000	BS	RAM	DEG	RAM	9/9/76	04	4549	B-208-013	B21	H33	D

ELEM DIAG 1G33-F034

Rids

82.214003

