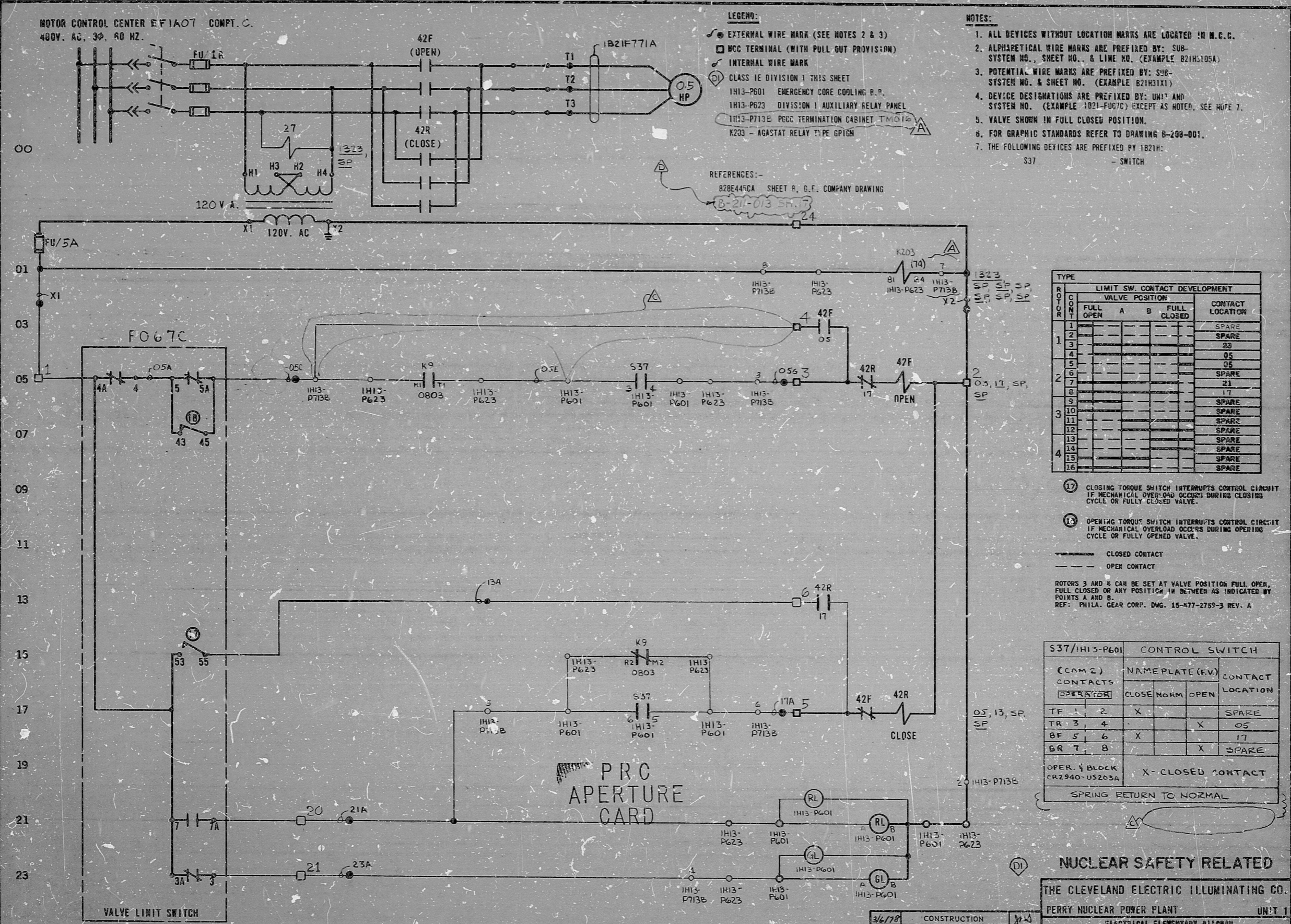


MOTOR CONTROL CENTER FIAOT COMPT. C.
480V. AC, 3Ø, 60 HZ.



- LEGEND:**
- EXTERNAL WIRE MARK (SEE NOTES 2 & 3)
 - MCC TERMINAL (WITH PULL OUT PROVISION)
 - INTERNAL WIRE MARK
 - CLASS 1E DIVISION 1 THIS SHEET
 - 1H13-P601 EMERGENCY CORE COOLING P.P.
 - 1H13-P623 DIVISION 1 AUXILIARY RELAY PANEL
 - 1H13-P713E PCC TERMINATION CABINET
 - K203 - AGASTAT RELAY TYPE GP16M

REFERENCES:-
82BE449CA SHEET R, G.F. COMPANY DRAWING
B-21-03

- NOTES:**
1. ALL DEVICES WITHOUT LOCATION MARKS ARE LOCATED IN M.C.C.
 2. ALPHABETICAL WIRE MARKS ARE PREFIXED BY: SUB-SYSTEM NO., SHEET NO., & LINE NO. (EXAMPLE B21H3105A)
 3. POTENTIAL WIRE MARKS ARE PREFIXED BY: SUB-SYSTEM NO. & SHEET NO. (EXAMPLE B21H31X1)
 4. DEVICE DESIGNATIONS ARE PREFIXED BY: UNIT AND SYSTEM NO. (EXAMPLE 1021-F07C) EXCEPT AS NOTED, SEE NOTE 7.
 5. VALVE SHOWN IN FULL CLOSED POSITION.
 6. FOR GRAPHIC STANDARDS REFER TO DRAWING B-208-001.
 7. THE FOLLOWING DEVICES ARE PREFIXED BY 1B21H:
S37 - SWITCH

ROTOR	LIMIT SW. CONTACT DEVELOPMENT		CONTACT LOCATION
	FULL OPEN	FULL CLOSED	
1			SPARE
2			SPARE
3			23
4			05
5			05
6			SPARE
7			21
8			17
9			SPARE
10			SPARE
11			SPARE
12			SPARE
13			SPARE
14			SPARE
15			SPARE
16			SPARE

- 17 CLOSING TORQUE SWITCH INTERRUPTS CONTROL CIRCUIT IF MECHANICAL OVERLOAD OCCURS DURING CLOSING CYCLE OR FULLY CLOSED VALVE.
 - 18 OPENING TORQUE SWITCH INTERRUPTS CONTROL CIRCUIT IF MECHANICAL OVERLOAD OCCURS DURING OPERING CYCLE OR FULLY OPENED VALVE.
 - CLOSED CONTACT
 - - - OPEN CONTACT
- ROTOR 3 AND 8 CAN BE SET AT VALVE POSITION FULL OPEN, FULL CLOSED OR ANY POSITION IN BETWEEN AS INDICATED BY POINTS A AND B.
REF: PHILA. GEAR CORP. DWG. 15-477-2759-3 REV. A

S37/1H13-P601 CONTROL SWITCH		CONTACT LOCATION	
(CAM 2) CONTACTS	NAMEPLATE (REV)	CLOSE NORM	OPEN
OPERATOR			
TR 1 2	X		SPARE
TR 3 4			X 05
BF 5 6	X		17
BR 7 8			X SPARE
OPER. & BLOCK CR2940-US203A		X-CLOSED CONTACT	
SPRING RETURN TO NORMAL			

NUCLEAR SAFETY RELATED

THE CLEVELAND ELECTRIC ILLUMINATING CO.		PERRY NUCLEAR POWER PLANT UNIT 1	
ELECTRICAL-ELEMENTARY DIAGRAM			
NUCLEAR STEAM SUPPLY SHUTDOWN SYSTEM			
MAIN STEAMLINE DRAIN LINE ISOLATION			
MOTOR OPERATED VALVE (OUTBOARD) F067C			
04	4549	5-208-013	B21 H31 D
DRAWING NUMBER		SYSTEM SH. NO. REV.	

REV	MADE	CHKD	APPROVALS	DATE	REV	MADE	CHKD	APPROVALS	DATE	REV	MADE	CHKD	APPROVALS	DATE	REV	MADE	CHKD	APPROVALS	DATE	WORK ORDER	MADE	CHKD	DR. APP.	ENG. APP.	DATE

ELEM DIAG 1B21-F067C

Rids

82.2130443

