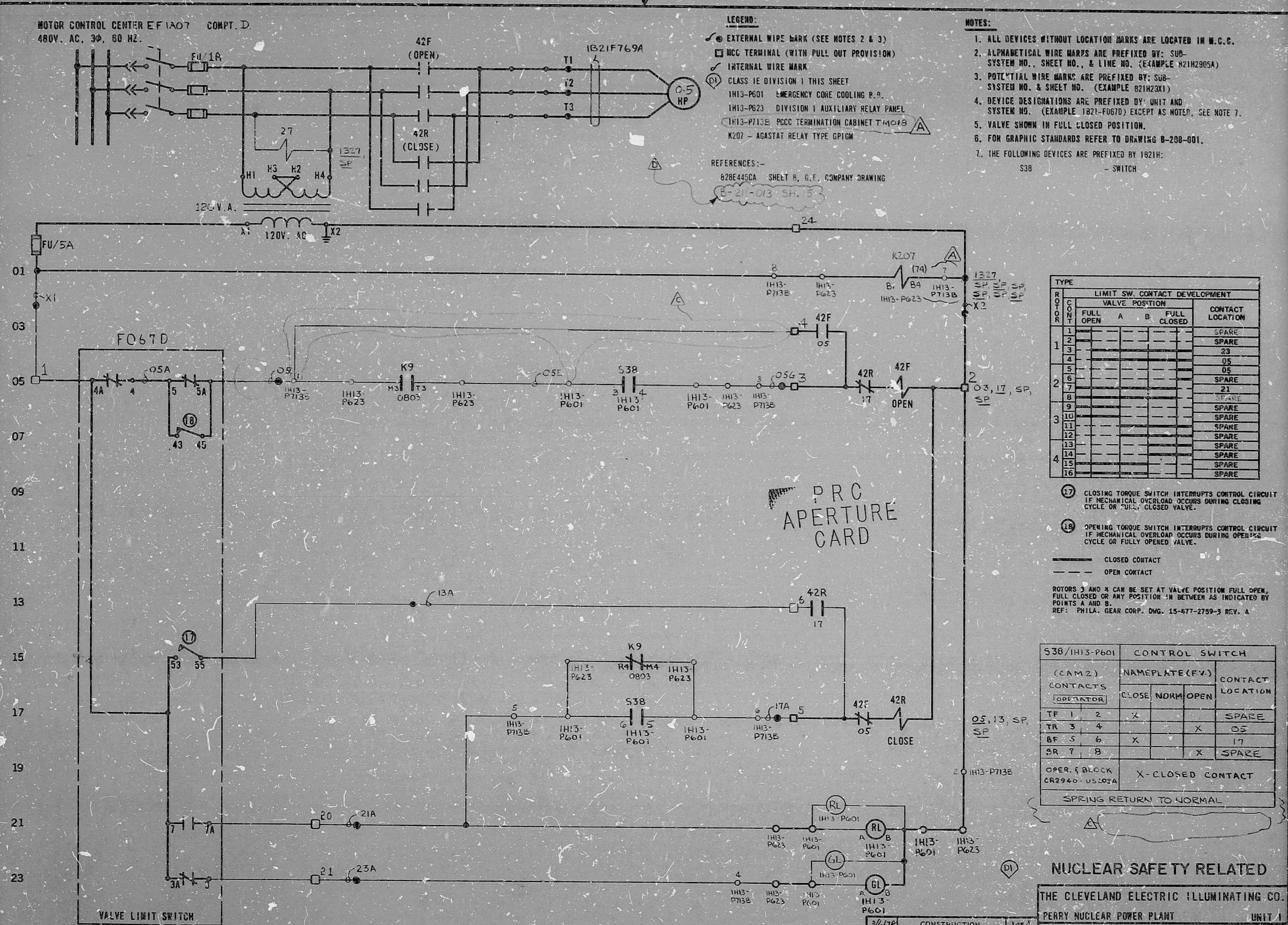


MOTOR CONTROL CENTER EF1A07 COMPT. D.
480V. AC, 3Φ, 60 HZ.



LEGEND:
 ○ EXTERNAL WIRE MARK (SEE NOTES 2 & 3)
 □ MCC TERMINAL (WITH PULL OUT PROVISION)
 ○ INTERNAL WIRE MARK
 (D) CLASS 1E DIVISION 1 THIS SHEET
 IH13-P601 EMERGENCY CORE COOLING P.P.
 IH13-P623 DIVISION 1 AUXILIARY RELAY PANEL
 IH13-P713E PCCC TERMINATION CABINET T4018
 K207 - AGASTAT RELAY TYPE GP1GM

REFERENCES:
 B28E445CA SHELT R. G.F. COMPANY DRAWING
 B-21-013 SH. 5

- NOTES:**
1. ALL DEVICES WITHOUT LOCATION MARKS ARE LOCATED IN M.C.C.
 2. ALPHABETICAL WIRE MARKS ARE PREFIXED BY: SUB-SYSTEM NO., SHEET NO., & LINE NO. (EXAMPLE B21H2905A)
 3. POTENTIAL WIRE MARKS ARE PREFIXED BY: SUB-SYSTEM NO. & SHEET NO. (EXAMPLE B21H23X1)
 4. DEVICE DESIGNATIONS ARE PREFIXED BY UNIT AND SYSTEM NO. (EXAMPLE 1B21-F067D) EXCEPT AS NOTED, SEE NOTE 7.
 5. VALVE SHOWN IN FULL CLOSED POSITION.
 6. FOR GRAPHIC STANDARDS REFER TO DRAWING B-200-001.
 7. THE FOLLOWING DEVICES ARE PREFIXED BY 1B21H:
S38 SWITCH

ROTOR	LIMIT SW. CONTACT DEVELOPMENT				CONTACT LOCATION
	VALVE POSITION		FULL CLOSED		
NO.	1	2	3	4	
1					SPARE
2					SPARE
3					23
4					05
5					05
6					SPARE
7					21
8					SPARE
9					SPARE
10					SPARE
11					SPARE
12					SPARE
13					SPARE
14					SPARE
15					SPARE
16					SPARE

- 17 CLOSING TORQUE SWITCH INTERRUPTS CONTROL CIRCUIT IF MECHANICAL OVERLOAD OCCURS DURING CLOSING CYCLE OR FULLY CLOSED VALVE.
- 18 OPENING TORQUE SWITCH INTERRUPTS CONTROL CIRCUIT IF MECHANICAL OVERLOAD OCCURS DURING OPENING CYCLE OR FULLY OPENED VALVE.
- — — CLOSED CONTACT
 - - - OPEN CONTACT
- ROTORS 3 AND X CAN BE SET AT VALVE POSITION FULL OPEN, FULL CLOSED OR ANY POSITION IN BETWEEN AS INDICATED BY POINTS A AND B.
 REF: PHILA. GEAR CORP. DWG. 15-877-2759-3 REV. A

538/IH13-P601 CONTROL SWITCH				
(CAM 2) CONTACTS		NAMEPLATE (F.V.)		CONTACT LOCATION
OPERATOR		CLOSE	NORM OPEN	
TF 1	2	X		SPARE
TR 3	4		X	05
BF 5	6	X		17
DR 7	8		X	SPARE
OPER. BLOCK CR2940-US-002A		X-CLOSED CONTACT		
SPRING RETURN TO NORMAL				

PRC APERTURE CARD

NUCLEAR SAFETY RELATED

THE CLEVELAND ELECTRIC ILLUMINATING CO.
 PERRY NUCLEAR POWER PLANT UNIT 1
 ELECTRICAL-ELEMENTARY DIAGRAM
 NUCLEAR STEAM SUPPLY SHUTOFF SYSTEM
 MAIN STEAMLINE D DRAIN LINE ISOLATION
 MOTOR OPERATED VALVE (ONBOARD) F067D

REV	MADE	CHKD	APPROVALS	DATE	ADDED REF.	REVISED PER PY-GEN/GAI-1385 REMOVE HOLD	CHANGED FUSE INFORMATION	ADDED FITS INFORMATION	READING PA.	GILBERT ASSOCIATES, INC. ENGINEERS AND CONSULTANTS	DATE	WORK ORDER	MADE	CHKD.	DR. APP.	ENG. APP.	DATE	DRAWING NUMBER	SYSTEM SH. NO.	REV.
					D P V Am Dec Ram 2/13/82	C V Z RM DEG RAM 2-12-81	B RM J RAM DEG RAM 1-4-80	A RM J RAM DEG RAM 7-25-79	044549-000	G.R.G.	4.6.5	DEG	YMS	3/6/78	04	4549	B-200-013	B21	H29	D

ELEM DIAG 1B21-F067D

Rids

82-2130439

