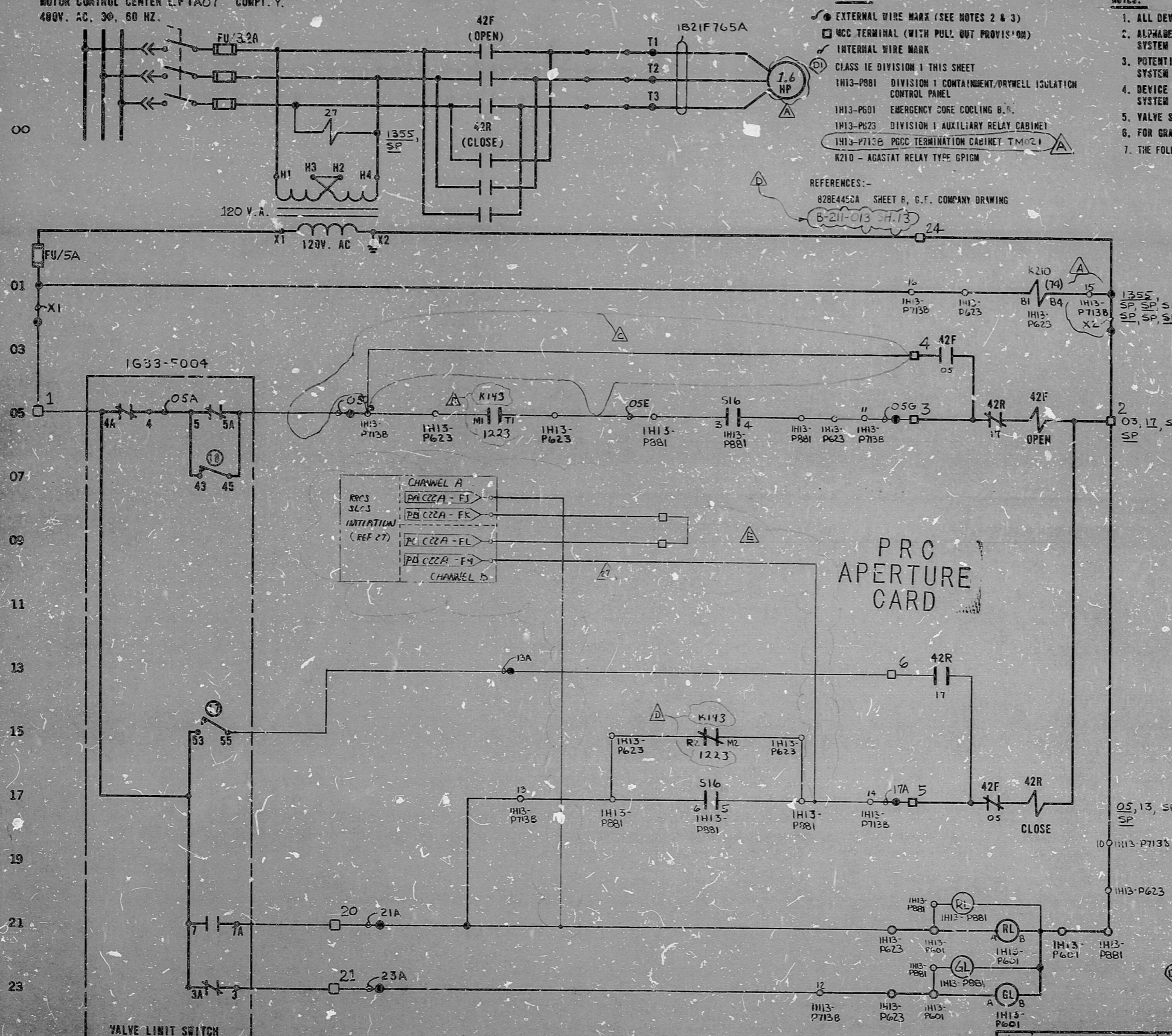


MOTOR CONTROL CENTER (MCC) COMPT. Y.  
480V. AC. 3Ø. 60 HZ.



- LEGEND:**
- EXTERNAL WIRE MARK (SEE NOTES 2 & 3)
  - MCC TERMINAL (WITH PULL OUT PROVISION)
  - INTERNAL WIRE MARK
  - CLASS 1E DIVISION 1 THIS SHEET
  - 1H13-P881 DIVISION 1 CONTAINMENT/DRYWELL ISOLATION CONTROL PANEL
  - 1H13-P601 EMERGENCY CORE COOLING B.V.
  - 1H13-P623 DIVISION 1 AUXILIARY RELAY CABINET
  - 1H13-P713B PCCG TERMINATION CABINET TMO21
  - K210 - AGASTAT RELAY TYPE GP1GM

- NOTES:**
- ALL DEVICES WITHOUT LOCATION MARKS ARE LOCATED IN M.C.C.
  - ALPHABETICAL WIRE MARKS ARE PREFIXED BY: SUB-SYSTEM NO., SHEET NO., & LINE NO. (EXAMPLE B21H2705A)
  - POTENTIAL WIRE MARKS ARE PREFIXED BY: SUB-SYSTEM NO. & SHEET NO. (EXAMPLE B21H27X1)
  - DEVICE DESIGNATIONS ARE PREFIXED BY: UNIT AND SYSTEM NO. (EXAMPLE 1G33-F004), EXCEPT AS NOTED, SEE NOTE 7.
  - VALVE SHOWN IN FULL CLOSED POSITION.
  - FOR GRAPHIC STANDARDS REFER TO DRAWING 0-208-001.
  - THE FOLLOWING DEVICES ARE PREFIXED BY 1B21H:

**REFERENCES:**  
828E4452A SHEET R, G.F. COMPANY DRAWING

ROTOR	CONTACT	LIMIT SW. CONTACT DEVELOPMENT		CONTACT LOCATION
		FULL OPEN	FULL CLOSED	
1	1			SPARE
1	2			633-1605 -HOLD
1	3			23
1	4			05
1	5			SPARE
2	6			21
2	7			SPARE
2	8			633-1505 -HOLD
3	9			SPARE
3	10			SPARE
3	11			SPARE
3	12			SPARE
3	13			SPARE
3	14			SPARE
3	15			SPARE
3	16			SPARE

- 17 CLOSING TORQUE SWITCH INTERRUPTS CONTROL CIRCUIT IF MECHANICAL OVERLOAD OCCURS DURING CLOSING CYCLE OR FULLY CLOSED VALVE.
  - 18 OPENING TORQUE SWITCH INTERRUPTS CONTROL CIRCUIT IF MECHANICAL OVERLOAD OCCURS DURING OPENING CYCLE OR FULLY OPENED VALVE.
- CLOSED CONTACT  
- - - - - OPEN CONTACT
- ROTOR 3 AND 4 CAN BE SET AT VALVE POSITION FULL OPEN, FULL CLOSED OR ANY POSITION IN BETWEEN AS INDICATED BY POINTS A AND B.  
REF: PHILA. GEAR CORP. DNG. 15-477-2755-3 REV. A

S16/1H13-P881 CONTROL SWITCH				
(CAM 2) CONTACTS	NAMEPLATE (REV.)			CONTACT LOCATION
	OPERATOR	CLOSE	NORM OPEN	
TR 1	2	X		SPARE
TR 3	4		X	05
BF 5	6	X		17
BR 7	8		X	SPARE

OPER. BLOCK CR2940-US203A  
X - CLOSED CONTACT  
SPRING RETURN TO NORMAL

**NUCLEAR SAFETY RELATED**

THE CLEVELAND ELECTRIC ILLUMINATING CO.  
PERRY NUCLEAR POWER PLANT UNIT 1  
ELECTRICAL-ELEMENTARY DIAGRAM  
NUCLEAR STEAM SUPPLY SHUTOFF SYSTEM  
REACTOR WATER CLEANUP DISCHARGE  
ISOLATION MOTOR OPERATED VALVE 1G33-F004

ADDN. ATNS CIRCUITRY PER GE DWG. REV. C	ADDN. REF. CHG. RELAY NUMBER PER G.F. DWG.	REVISED PER FY-GEN/GAI-1385 REMOVED HOLD	CHANGED FUSE INFORMATION	ADDN. FITS INFORMATION CHANGED HP RATING	READING PA.	DATE	WORK ORDER	DATE	DATE	DATE
						3/6/78				

GILBERT ASSOCIATES, INC. ENGINEERS AND CONSULTANTS

044549-000 RAM GRG. DEC 1977

044549-000 1B-208-013 B21 H27 E

8.5"  
11"  
17"

8.5"  
11"  
17"

Rids

82-2130430

