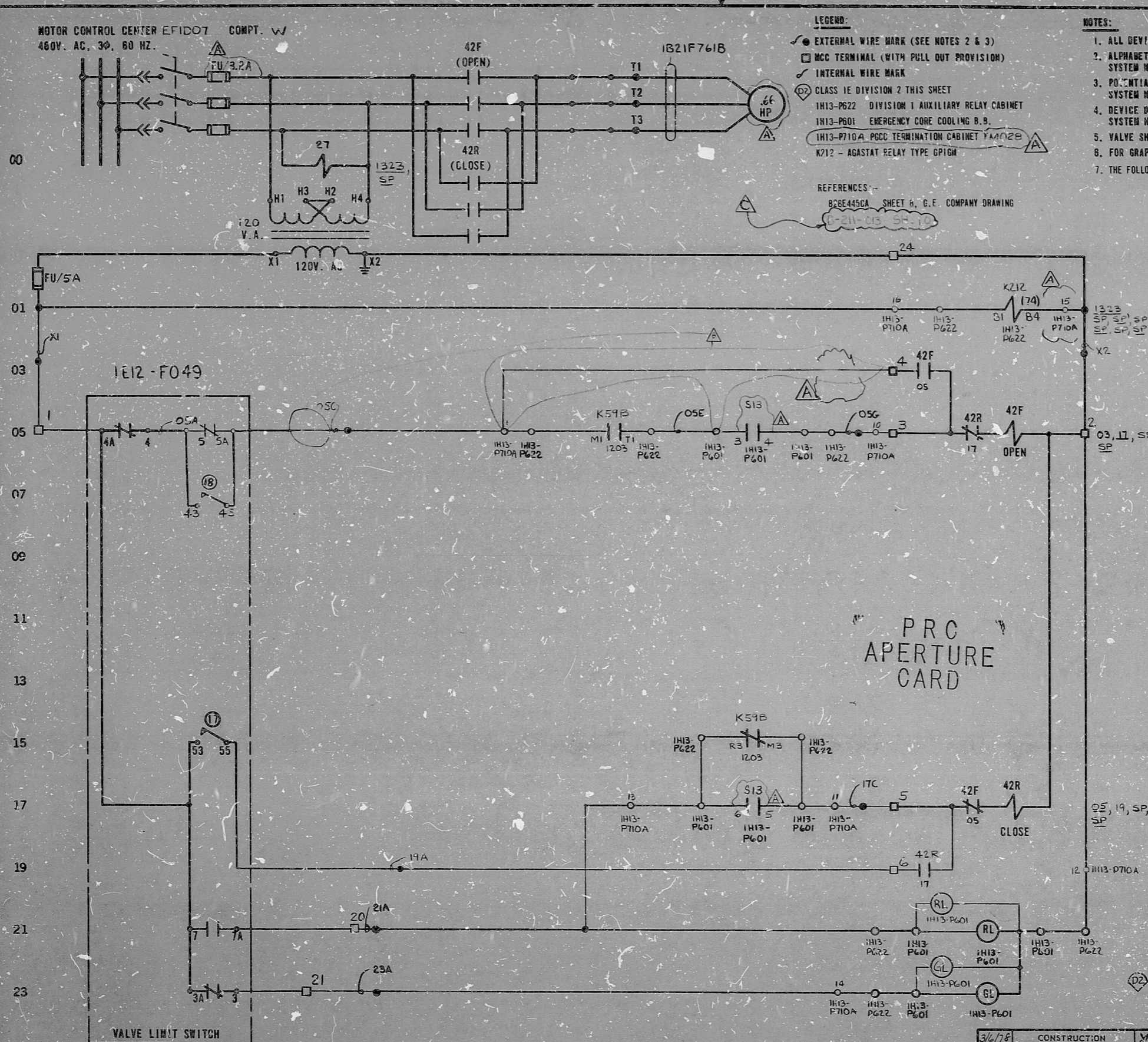


MOTOR CONTROL CENTER EFID07 COMPT. W
480V. AC, 3Φ, 60 HZ.



LEGEND:

- EXTERNAL WIRE MARK (SEE NOTES 2 & 3)
- MCC TERMINAL (WITH PULL OUT PROVISION)
- INTERNAL WIRE MARK
- Ⓚ CLASS 1E DIVISION 2 THIS SHEET
- Ⓚ I113-P622 DIVISION 1 AUXILIARY RELAY CABINET
- Ⓚ I113-P601 EMERGENCY CORE COOLING B.B.
- Ⓚ I113-P710A PCCC TERMINATION CABINET YAM02B
- Ⓚ K212 - AGASTAT RELAY TYPE GP1GM

REFERENCES:

828E4450A SHEET 6, B.E. COMPANY DRAWING

NOTES:

1. ALL DEVICES WITHOUT LOCATION MARKS ARE LOCATED IN M.C.C.
2. ALPHABETICAL WIRE MARKS ARE PREFIXED BY: SUB-SYSTEM NO., SHEET NO., & LINE NO. (EXAMPLE: B21H2405A)
3. POTENTIAL WIRE MARKS ARE PREFIXED BY: SUB-SYSTEM NO. & SHEET NO. (EXAMPLE: B21H24X1)
4. DEVICE DESIGNATIONS ARE PREFIXED BY: UNIT AND SYSTEM NO. (EXAMPLE: 1E12-F049) EXCEPT AS NOTED. SEE NOTE 7.
5. VALVE SHOWN IN FULL CLOSED POSITION.
6. FOR GRAPHIC STANDARDS REFER TO DRAWING B-200-001.
7. THE FOLLOWING DEVICES ARE PREFIXED BY 1B21H:
S14 - SWITCH

R O T O R	LIMIT SW. CONTACT DEVELOPMENT			CONTACT LOCATION
	VALVE POSITION			
	FULL OPEN	A B	FULL CLOSED	
1				SPARE
2				SPARE
3				23
4				05
5				05
6				SPARE
7				21
8				SPARE
9				SPARE
10				SPARE
11				SPARE
12				SPARE
13				SPARE
14				SPARE
15				SPARE
16				SPARE

- Ⓚ 17 CLOSING TORQUE SWITCH INTERRUPTS CONTROL CIRCUIT IF MECHANICAL OVERLOAD OCCURS DURING CLOSING CYCLE OF FULLY CLOSED VALVE.
 - Ⓚ 18 OPENING TORQUE SWITCH INTERRUPTS CONTROL CIRCUIT IF MECHANICAL OVERLOAD OCCURS DURING OPENING CYCLE OR FULLY OPENED VALVE.
 - CLOSED CONTACT
 - - - OPEN CONTACT
- ROTOR 3 AND 4 CAN BE SET AT VALVE POSITION FULL OPEN, FULL CLOSED OR ANY POSITION IN BETWEEN AS INDICATED BY POINTS A AND B.
REF: PHILA. GEAR CORP. DNG. 15-477-2759-3 REV. A

S13 / I113-P601 CONTROL SWITCH				
(CAM 2) CONTACTS		NAMEPLATE (F.V.)		CONTACT LOCATION
OPERATOR		CLOSE	NORM. OPEN	
TR	1 2	X		SPARE
TR	3 4		X	05
BF	5 6	X		17
BR	7 8		X	SPARE
OPER. BLOCK CR2940-US203A		X - CLOSED CONTACT		
SPRING RETURN TO NORMAL				

PRC APERTURE CARD

NUCLEAR SAFETY RELATED

THE CLEVELAND ELECTRIC ILLUMINATING CO.
PERRY NUCLEAR POWER PLANT UNIT 1
ELECTRICAL-ELEMENTARY DIAGRAM
NUCLEAR STEAM SUPPLY SHUTOFF SYSTEM
RHR TO RADWASTE ISOLATION VALVE
INBOARD (DIVISION 2) 1E12-F049

REV	MADE	CHKD	APPROVALS	DATE	REV	MADE	CHKD	APPROVALS	DATE	REV	MADE	CHKD	APPROVALS	DATE	REV	MADE	CHKD	APPROVALS	DATE	WORK ORDER	MADE	CHKD.	DR. APP.	ENG. APP.	DATE	DRAWING NUMBER	SYSTEM	SN. NO.	REV.

E L E M E N T A R Y D I A G R A M I E 1 2 - F 0 4 9

Rids

82.12130431

