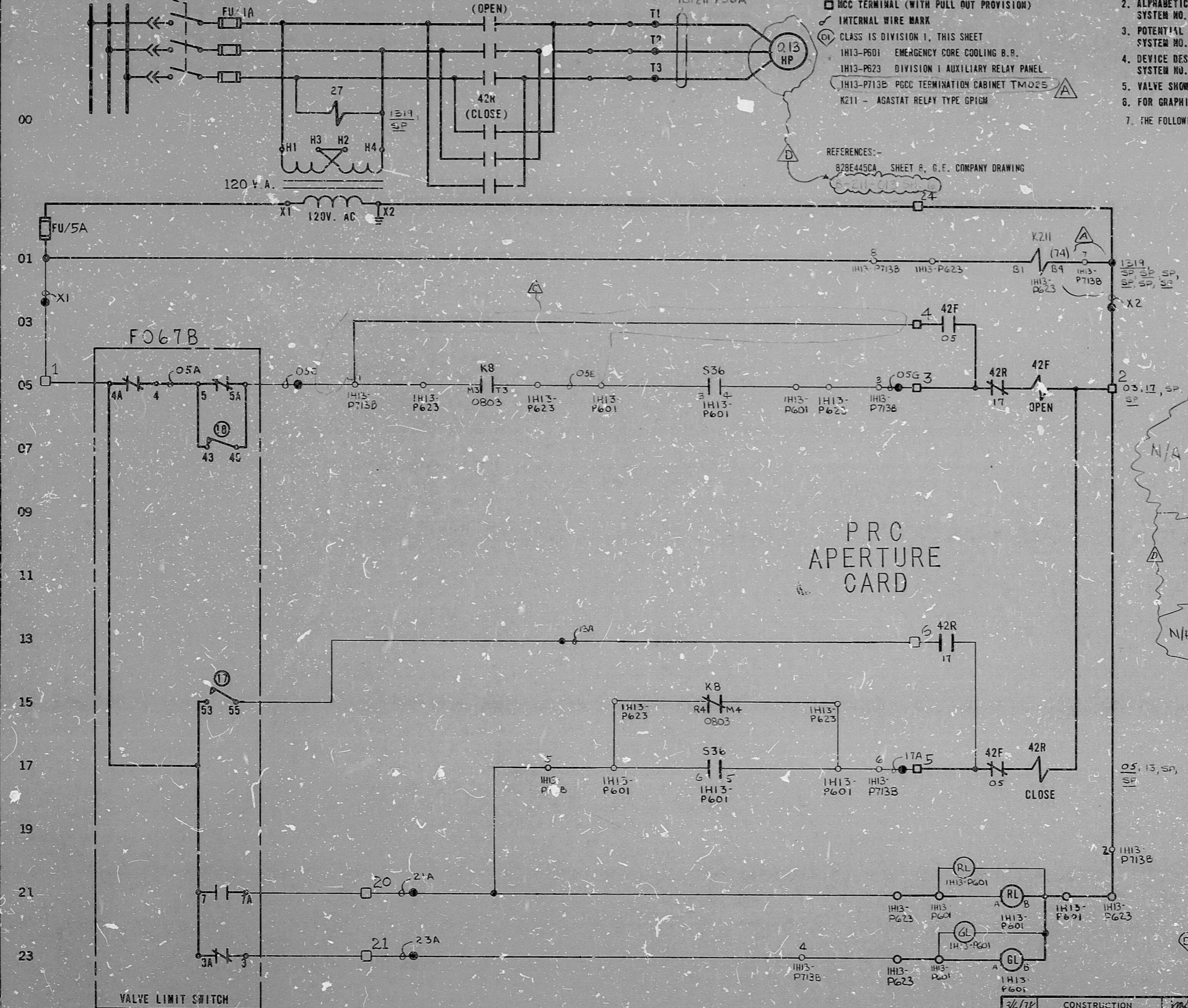


MOTOR CONTROL CENTER F1A07 COMPT. B
480V. AC, 3Ø, 60 HZ.



LEGEND:
 ○ EXTERNAL WIRE MARK (SEE NOTES 2 & 3)
 □ MCC TERMINAL (WITH PULL OUT PROVISION)
 ○ INTERNAL WIRE MARK
 ○ CLASS IS DIVISION 1, THIS SHEET
 1H13-P601 EMERGENCY CORE COOLING B.R.
 1H13-P623 DIVISION 1 AUXILIARY RELAY PANEL
 1H13-P713B PDC TERMINATION CABINET TMO25
 K211 - AGASTAT RELAY TYPE GP1GM
 REFERENCES:-
 828E445CA SHEET 9, C.E. COMPANY DRAWING

NOTES:
 1. ALL DEVICES WITHOUT LOCATION MARKS ARE LOCATED IN M.C.C.
 2. ALPHABETICAL WIRE MARKS ARE PREFIXED BY: SUB-SYSTEM NO., SHEET NO., & LINE NO. (EXAMPLE B21H2005A)
 3. POTENTIAL WIRE MARKS ARE PREFIXED BY: SUB-SYSTEM NO. & SHEET NO. (EXAMPLE B21H2001)
 4. DEVICE DESIGNATIONS ARE PREFIXED BY: UNIT AND SYSTEM NO. (EXAMPLE 1B21-F067B) EXCEPT AS NOTED, (SEE NOTE 7).
 5. VALVE SHOWN IN FULL CLOSED POSITION.
 6. FOR GRAPHIC STANDARDS REFER TO DRAWING D-200-001.
 7. THE FOLLOWING DEVICES ARE PREFIXED BY 1B21H:
 S36 - SWITCH

ROTOR	LIMIT SW. CONTACT DEVELOPMENT			CONTACT LOCATION
	FULL OPEN	A B FULL	CLOSED	
1				SPARE
2				SPARE
3				23
4				05
5				05
6				SPARE
7				21
8				SPARE
9				SPARE
10				SPARE
11				SPARE
12				SPARE
13				SPARE
14				SPARE
15				SPARE
16				SPARE

⑰ CLOSING TORQUE SWITCH INTERRUPTS CONTROL CIRCUIT IF MECHANICAL OVERLOAD OCCURS DURING CLOSING CYCLE OR FULLY CLOSED VALVE.
 ⑱ OPENING TORQUE SWITCH INTERRUPTS CONTROL CIRCUIT IF MECHANICAL OVERLOAD OCCURS DURING OPENING CYCLE OR FULLY OPENED VALVE.
 ——— CLOSED CONTACT
 - - - - - OPEN CONTACT
 ROTORS 3 AND 4 CAN BE SET AT VALVE POSITION FULL OPEN, FULL CLOSED OR ANY POSITION IN BETWEEN AS INDICATED BY POINTS A AND B.
 REF: PHILA. GEAR COMP. DWG. 15-477-2759-3 REV. A

S36/1H13-P601 CONTROL SWITCH			
(CAM2) CONTACTS	NAMEPLATE (REV)		CONTACT LOCATION
OPERATOR	CLOSE	NORM	OPEN
TF 1 2	X		SPARE
TR 3 4			X 05
BF 5 6	X		17
BR 7 8			X SPARE
OPER. BLOCK CR2940-05203A	X - CLOSED CONTACT		
SPRING RETURN TO NORMAL			

ⓓ NUCLEAR SAFETY RELATED

THE CLEVELAND ELECTRIC ILLUMINATING CO.
 FERRY NUCLEAR POWER PLANT UNIT 1
 ELECTRICAL-ELEMENTARY DIAGRAM
 NUCLEAR STEAM SUPPLY SHUTOFF SYSTEM
 MAIN STEAMLINE DRAIN LINE ISOLATION
 MOTOR OPERATED VALVE F067B (NOT BRC)

REV	MADE	CHKD	APPROVALS	DATE	ADDED REF CHANGED MOTOR SIZE	REVISED PER PY-GEN/GAI-1385 REMOVED HOLD	CHANGED FUSE INFORMATION	ADDED FITS INFORMATION	READING PA.	GILBERT ASSOCIATES, INC. ENGINEERS AND CONSULTANTS	DATE	WORK ORDER	MADE	CHKD.	DR. APP.	ENGR. APP.	DATE	DRAWING NUMBER	SYSTEM	SH. NO.	REV.		
																		04	4549	B-208-013	B21	H20	D

ELEM DIAG 1B21 F067B

Rids

82.2130426

