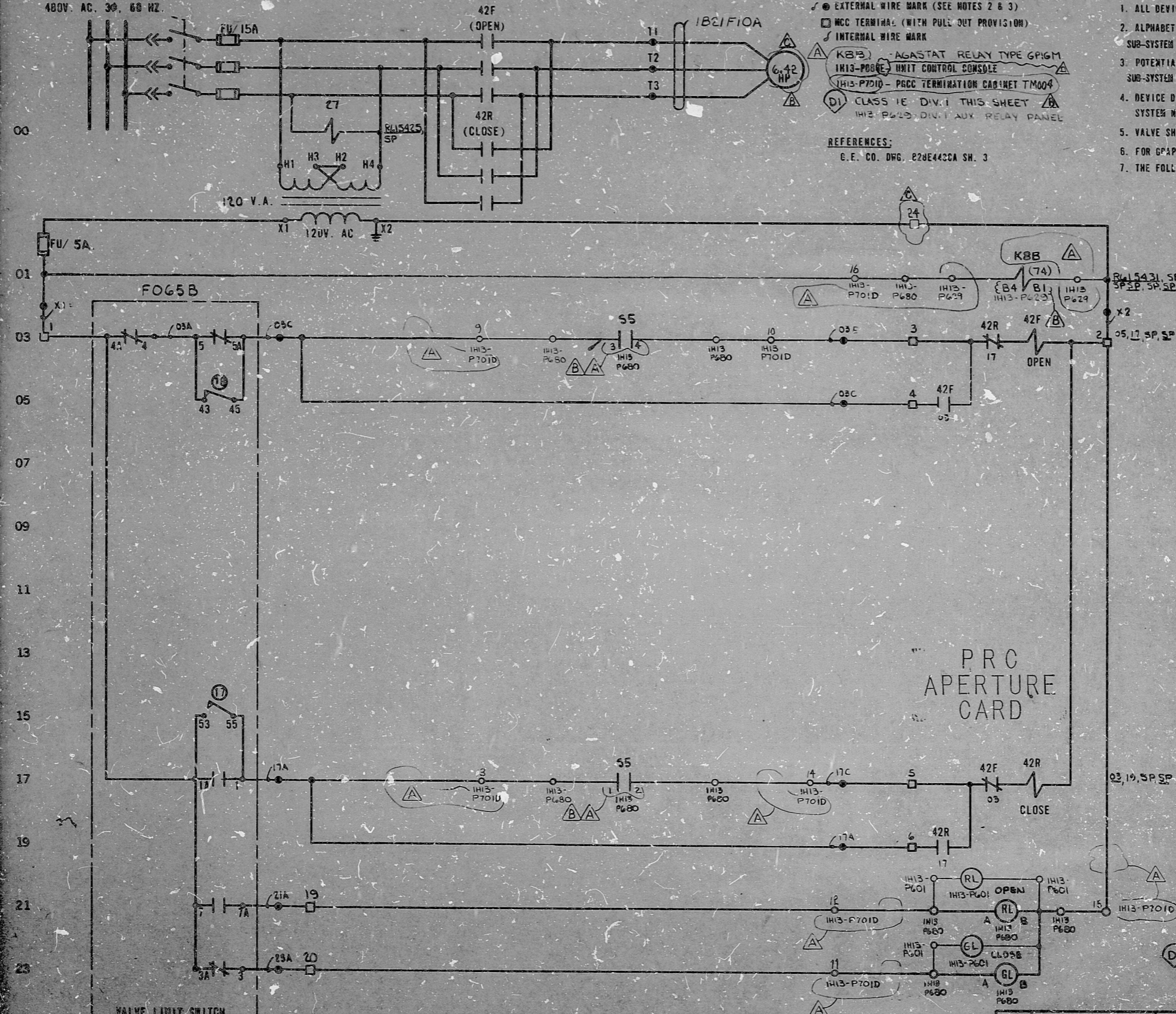


MOTOR CONTROL CENTER EF1A07 COMPT 6  
480V AC 3Ø 60 HZ.



LEGEND:

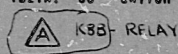
- EXTERNAL WIRE MARK (SEE NOTES 2 & 3)
- MCC TERMINAL (WITH PULL OUT PROVISION)
- INTERNAL WIRE MARK
- KBB AGASTAT RELAY TYPE 6P6M
- IH13-P680 UNIT CONTROL CONSOLE
- IH13-P701D - P6CC TERMINATION CABINET TM004
- DI CLASS 1E DIV. 1 THIS SHEET
- IH13-P619 DIV. 1 AUX. RELAY PANEL

REFERENCES:

G.E. CO. DWG. 224E443CA SH. 3

NOTES:

1. ALL DEVICES WITHOUT LOCATION MARKS ARE LOCATED IN M.C.C.
2. ALPHABETICAL WIRE MARKS ARE PREFIXED BY: SUB-SYSTEM NO., SHEET NO., & LINE NO. (EXAMPLE B21A1003A)
3. POTENTIAL WIRE MARKS ARE PREFIXED BY: SUB-SYSTEM NO. & SHEET NO. (EXAMPLE B21A10X1)
4. DEVICE DESIGNATIONS ARE PREFIXED BY: UNIT AND SYSTEM NO. (EXAMPLE 1B21-F055B) EXCEPT AS NOTED (SEE NOTE 7).
5. VALVE SHOWN IN FULL CLOSED POSITION.
6. FOR GRAPHIC STANDARDS REFER TO DRAWING 8-208-001.
7. THE FOLLOWING DEVICES ARE PREFIXED BY 1B21A: S5 - SWITCH



ROTOR	LIMIT SW. CONTACT DEVELOPMENT		CONTACT LOCATION
	VALVE POSITION FULL OPEN	VALVE POSITION FULL CLOSED	
1			17
2			SPARE
3			23
4			03
5			03
6			SPARE
7			21
8			SPARE
9			SPARE
10			SPARE
11			SPARE
12			SPARE
13			SPARE
14			SPARE
15			SPARE
16			SPARE

- 17 CLOSING TORQUE SWITCH INTERRUPTS CONTROL CIRCUIT IF MECHANICAL OVERLOAD OCCURS DURING CLOSING CYCLE OR FULLY CLOSED VALVE.
- 18 OPENING TORQUE SWITCH INTERRUPTS CONTROL CIRCUIT IF MECHANICAL OVERLOAD OCCURS DURING OPENING CYCLE OR FULLY OPEN VALVE.

— CLOSED CONTACT  
- - - OPEN CONTACT

ROTORS 3 AND 4 CAN BE SET AT VALVE POSITION FULL OPEN, FULL CLOSED OR ANY POSITION IN BETWEEN AS INDICATED BY POINTS A AND B.  
REF: PHILA. GEAR CORP. DWG. 15-477-2759-3 REV. A

S5/IH13-P680		CONTROL SWITCH		
(CAM) CONTACTS	OPERATOR	NAMEPLATE (F.V.)	CONTACT	LOCATION
		CLOSE	NORMAL	OPEN
TR 1	2	X		17
TR 3	4			05
BF 5	6	X		SPARE
BR 7	8			SPARE
OPER BLOCK CR2940-US209A		X - CLOSED CONTACT		
SPRING RETURN TO NORMAL				

DI NUCLEAR SAFETY RELATED

THE CLEVELAND ELECTRIC ILLUMINATING CO.  
PERRY NUCLEAR POWER PLANT UNIT 1  
ELECTRICAL ELEMENTARY DIAGRAM  
NUCLEAR BOILER SYSTEM  
FEEDWATER INLET SHUTOFF VALVE  
F055B

REV	NO.	DATE	BY	CHKD	APPROVALS	DATE	REV	NO.	DATE	BY	CHKD	APPROVALS	DATE	REV	NO.	DATE	BY	CHKD	APPROVALS	DATE	WORK ORDER	MADE	CHKD	DATE	DRAWING NUMBER	SYSTEM

ELEM DIAG 1B21-F055B

66 21

66 11

66 58

8.5"

11"

17"

Rids

82-2130308

